

## R1 LA Series LW14-B

Wall Mount

**BI-DIRECT**  
Light Distribution



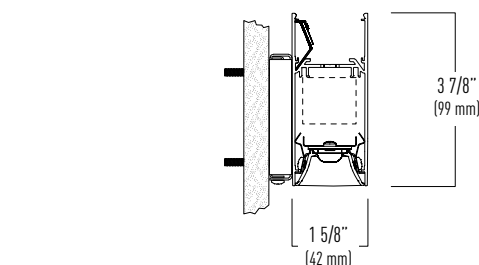
The LA Series is a low profile linear lighting system outfitted with precision discrete LED optics. The optical system is designed to focus direct light into specific areas of a space creating dramatic contrast without introducing high angle glare with it's baffle design.

- **Extruded aluminum housing and die cast aluminum end caps**
- **Discrete optical system offers three beam patterns: 35°, 50°, 80°**
- **Tool free installation with engineered spring latch design**
- **Intelligent wireless technology inside from premier connected lighting partners**
- **Available in 3 standard paint finishes and an array of wood grain finishes**

### Standard Individual Fixture Lengths\*

2' [609 mm]	16 Cells
3' [914 mm]	24 Cells
4' [1219 mm]	32 Cells
5' [1524 mm]	40 Cells
6' [1828 mm]	48 Cells
7' [2133 mm]	56 Cells
8' [2438 mm]	64 Cells

\* Dimensions represent fixture body length, add 1/4" for overall fixture dimension that includes both end caps



### ORDERING INFORMATION / Example: LW14-B-35B-08-L40-U-D-WH-6

LW14-B							
SERIES	DIRECT OPTICS	LUMENS / DOWN <sup>1</sup>	LUMENS / UP <sup>1</sup>	CRI/ CCT	VOLTAGE	DRIVER	CIRCUITING / EMERGENCY OPTIONS <sup>2</sup>
LW14-B	35B-35° spot black baffle	03 - 300 lm/ft	03 - 300 lm/ft	H30 <sup>4</sup> - 90 CRI, 3000K	U - Universal	<b>Dimming 0-10V</b>	<b>Qty of Power Circuits</b>
Wall Mount	35W-35° spot white baffle	05 - 500 lm/ft	05 - 500 lm/ft	H35 <sup>4</sup> - 90 CRI, 3500K	1 - 120V	D - Dim to 1% (Standard)	<b>Qty of Control Circuits</b>
Linear LED	50B-50° flood black baffle	08 - 800 lm/ft	08 - 800 lm/ft	H40 <sup>4</sup> - 90 CRI, 4000K	2 - 277V	D0 - Dim to 1%, Fade to Off	1 - 1 Circuit
Luminaire	50W-50° flood black baffle		10 - 1000 lm/ft			D02 - Eldoled Solodrive, Dim to 0%	2 - 2 Circuits
System.	80B-80° wide flood black baffle		13 - 1300 lm/ft			LUTRON - See options on page 2	
	80W-80° wide flood white baffle					<b>DALI Dimming</b>	
						ELE - Eldoled Ecodrive, Dim to 1%	
						ELS - Eldoled Solodrive, Dim to 0%	
							<b>Options</b>
							B6 - 6 Watt Battery Pack
							B10 - 10 Watt Battery Pack
							CEC - CEC Compliant (10 Watt Battery Pack)
							GTD - Generator Transfer Device (120V or 277V)
							EM - Dedicated Emergency Circuit

### FIXTURE FINISH

**WH** - White Painted Finish  
**SV** - Silver Painted Finish  
**BK** - Black Painted Finish  
**CC** - Custom Color  
**AG** - Two Tone Ash Gray Wood Grain  
**BG** - Light Black Gunstoack Wood Grain  
**EW** - Ebony Walnut Wood Grain  
**ST** - Delicate Straight Wood Grain

### LINEAR ROWS

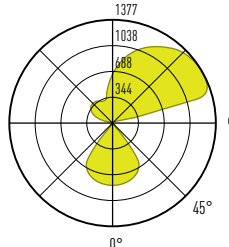
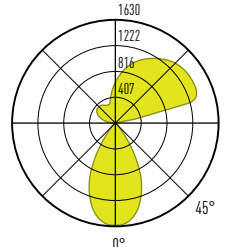
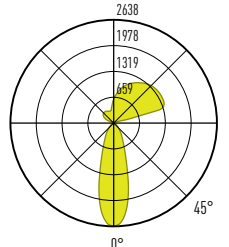
**2** - 24"  
**3** - 36"  
**4** - 48"  
**5** - 60"  
**6** - 72"  
**7** - 84"  
**8** - 96"  
**XX** - Specify continuous run lengths in 1' increments

### OPTIONS

**DG** - Dust Guard  
**WLX** - Wavelinx (Copper Lighting Solutions) integral sensor  
**NX** - NX (Hubbel) integral sensor  
**NLT** - nLight (Acuity Brands) integral sensor  
**LV** - Vive (Lutron) integral sensor  
**ENL** - Enlighted integra

**NOTES:**  
 1. Nominal lumen output for 3500K, 80 CRI  
 2. Battery pack and emergency circuit requires a minimum fixture length of 4'

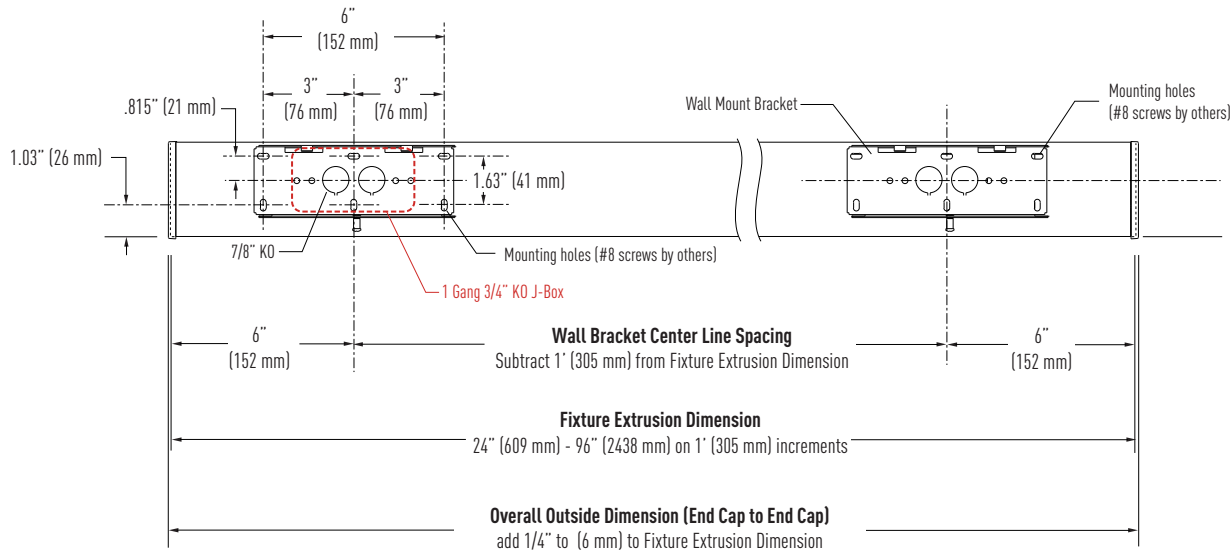
## PHOTOMETRICS

<div>Report #: ITL94686(Mod) 3500K / 80 CRI 1100 lumens per ft 80° optic / White Baffle</div> <div></div>					<div>Report #: ITL94685(Mod) 3500K / 80 CRI 1100 lumens per ft 50° optic / White Baffle</div> <div></div>					<div>Report #: ITL94684(Mod) 3500K / 80 CRI 1100 lumens per ft 35° optic / White Baffle</div> <div></div>							
Light Direction	Light Level	Lumens per ft	Watts per ft	Lumens per watt	Lumens per ft	Watts per ft	Lumens per watt	Lumens per ft	Watts per ft	Lumens per watt							
Direct	03	300	36.6	120	300	36.3	121	300	37.23	118							
Indirect	08	800			800			800									
Max luminance: 9251					Max luminance: 692						Max luminance: 4369						
Max UGR: 6.2					Max UGR: 5.1						Max UGR: 5.2						

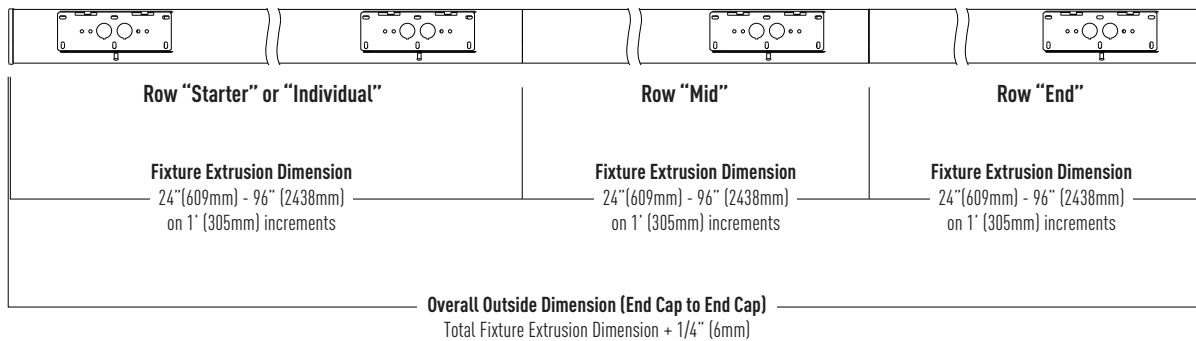
## DRIVER INFORMATION

NULITE CAT#	DRIVER MANUFACTURER / SERIES	DIMMING / CONTROL PROTOCOL	DIM RANGE	NOTES/ DESCRIPTION
D	Signify Xitanium, Osram OTI	0-10v	100% - 1%	Standard Nulite driver, base fixture price
D0	Signify Xitanium, Osram OTI	0-10v	100% - 1% (Steps from 1% to 0% or OFF)	Standard Nulite driver, base fixture price
D02	Eldoled Solodrive	0-10v	100% - 0%	Logarithmic Dimming Curve
L11	Lutron Hi-Lume Premier (PEQ0E) Max lumen package 03	0-10v	100% - 0.1%	Hi-Lume Premier 0.1% EcoSystem LED driver with Soft-on, Fade-to-Black dimming technology
L15	Lutron Hi-Lume Series (LDE1)	0-10v	100% - 1%	Hi-Lume 1% EcoSystem LED driver with Soft-on, Fade-to-Black dimming technology
ELE	Eldoled Ecodrive	DALI	100% - 1%	Logarithmic Dimming Curve
ELS	Eldoled Solodrive	DALI	100% - 0%	Logarithmic Dimming Curve

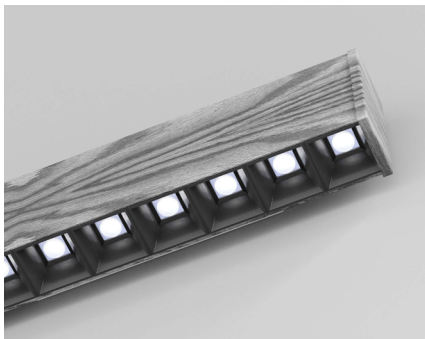
## CEILING MOUNTING DETAILS



## ROW LAYOUT DETAILS



## WOOD GRAIN FINISH



The LA Series is available in four standard wood grain (hydro-dipped) finishes to create visually stunning lighting installations. This option carries an upcharge and additional lead time, consult your local sales agent for more information.



AG - Two-Tone Ash Gray Wood Grain



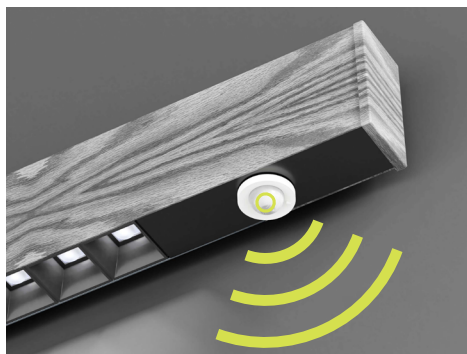
EW - Ebony Walnut Wood Grain



ST - Delicate Straight Wood Grain



BG - Light Black Gunstock Wood Grain



## OEM Connected Lighting Partners

Nulite has formed strategic partnerships with premier OEM suppliers of smart lighting control platforms. Nulite's focus is primarily on embedded fixture level smart sensors and power supplies ensuring system operability and code compliance.

### Benefits of an OEM Supplier

- Factory trained and certified to assemble and test product operability prior to shipment
- Authorized to purchase components, inventory on hand for shorter lead times compared to non-partners
- UL listed as an entire fixture assembly

## Wavelinx (WLX)

Cooper Lighting Solutions

[LEARN MORE](#)

### Integral Fixture Sensors

Item Description	OEM Part #	Integral Sensor Options																			
		0-10v Dimming Control	DALI Dimming Control	IP rated (Outdoor)	Wireless Control	Daylight Harvesting	Occupancy Sensing	LA Series	Regolo 1	Regolo 2	Regolo 3	Regolo 4	RZ4	RXT	Pixie	Sottile	Tavo	Sero	Qub	Bounce	INT
Wavelinx Ambient Integrated Sensor, 8-15ft (2.4-4.6m)	OEM-WAA	●			●	●	●	●	●	●	●										
Wavelinx Industrial Mount Sensor, White, up to 40ft (4.5 - 12.2m)	OEM-SWPD3-WH	●		●	●	●	●														●
Wavelinx Outdoor Fixture	OEM-SWPD5-WH/ BK/BZ	●	●	●	●	●	●						●								

#### Additional Notes:

- Nulite is OEM certified and authorized to purchase and install Wavelinx components into their luminaires. All products are fully tested at the Nulite factory and each product ships with UL compliance.
- **Ordering Example:** Nulite Catalog #: LP13-D-35B-05-03-L35-D-1-1-WH-T1-W-048-8-**WLX (OEM-WAA)**. This catalog designation merely identifies luminaires that require Wavelinx compatible integral fixture sensors. Additional hardware such as power packs and wiring harnesses are often required to operate sensors and offer compatibility to the overall control system. Nulite will coordinate with Wavelinx on these items and build into the price accordingly.
- Nulite's standard 0-10v LED drivers are Signify Xitanium Series, and Osram Optotronic Series

## nLight (NL)

Acuity Brands

[LEARN MORE](#)

### Integral Fixture Sensors

Item Description	OEM Part #	0-10v	DALI D	0-10v	DALI L	IP rated	Wireless	Daylight	Occupancy	LA Series	Regolo	Regolo	Regolo	Regolo	RZ4	RXT	Pixie	Sottile	Tavo	Sero	Qub	Bounce	INT
Indoor Embedded 360° Motion Sensor	MSD PDT 7**	●						●	●	●	●	●	●	●									
Fixture embedded smartsensor	RES7	●		●			●	●	●	●	●	●	●	●									
Passive infrared occupancy sensor	nES7	●						●	●	●	●	●	●	●									
Dimming Photocell	nES ADCX	●						●		●	●	●	●	●									
nLight AIR Outdoor 360° Embedded Motion Sensor	rMSOD	●		●			●	●	●							●							
Fixture embedded smartsensor for challenging environments	rSBG	●		●		●	●	●	●							●							●
nLight AIR Fixture Mount Sensor	rLSXR	●				●	●	●	●														●

#### Additional Notes:

- Nulite is authorized to purchase and install nLight components into their luminaires. All products are fully tested at the Nulite factory and each product ships with UL compliance.
- **Ordering Example:** Nulite Catalog #: LP13-D-35B-05-03-L35-D-1-1-WH-T1-W-048-8-**NL (RES7)**. This catalog designation merely identifies luminaires that require NX compatible integral fixture sensors. Additional hardware such as power packs and wiring harnesses are often required to operate sensors and offer compatibility to the overall control system. Nulite will coordinate with nLight on these items and build into the price accordingly.
- \*Proprietary Acuity Brands LEDcode drivers are required for nLight system programming and operation.
- \*\*The MSD PDT 7 is Nulite's standard wired integral fixture sensor

## OEM Connected Lighting Partners

### NX (NX)

Distributed Intelligence  
Hubbell

[LEARN MORE](#)

#### Integral Fixture Sensors

Item Description	OEM Part #	Integral Sensor Options																			
		0-10v	DALI D	IP rated	Wireless	Daylight	Occupancy	LA Series	Regolo	Regolo	Regolo	Regolo	RZ4	RXT	Pixie	Sottile	Tavo	Sero	Qub	Bounce	INT
HubbNET Radio Module	NXRM-H	●			●			●	●	●	●	●									
Low Mount Indoor Sensor Module	NXSM-P-LMI	●			●	●	●	●	●	●	●	●									
OMNI Indoor/Outdoor Sensor Module	NXSM-P-OMNI-0	●		●	●	●	●						●								
Slide Mount Indoor Sensor Module	NSXM-P-SMI	●			●	●	●	●	●	●	●	●									
Low Mount Indoor/Outdoor Sensor Module	NXSM-P-LM0	●		●	●	●	●						●								●
Low Mount Indoor/Outdoor Sensor Module, Aisle Lens	NXSM-P-LM0-4	●		●	●	●	●						●								●
High Mount Indoor/Outdoor Sensor Module	NXSM-P-HM0	●		●	●	●	●														●
High Mount Indoor/Outdoor Sensor Module, Aisle Lens	NXSM-P-HM0-4	●		●	●	●	●														●

#### Additional Notes:

- Nulite is an OEM certified nX partner and authorized to purchase and install NX components into their luminaires. All products are fully tested at the Nulite factory and each product ships with UL compliance.
- Ordering Example:** Nulite Catalog #: LP13-D-35B-05-03-L35-D-1-1-WH-T1-W-048-8-NX (NXRM-H). This catalog designation merely identifies luminaires that require NX compatible integral fixture sensors. Additional hardware such as power packs and wiring harnesses are often required to operate sensors and offer compatibility to the overall control system. Nulite will coordinate with the Hubbell on these items and build into the price accordingly.
- Nulite's standard 0-10v LED drivers are Signify Xitanium Series, and Osram Optotronic Series

### Enlighted (Enl)

A Siemens Company

[LEARN MORE](#)

#### Integral Fixture Sensors

Item Description	OEM Part #	Nulite Compatible Product Lines																			
		0-10v Dimming Control	DALI Dimming Control	IP rated (Outdoor)	Wireless Control	Daylight Harvesting	Occupancy Sensing	LA Series	Regolo 1	Regolo 2	Regolo 4	Regolo 6	RZ4	RXT	Pixie	Sottile	Tavo	Sero	Qub	Bounce	INT
MicroSensor, 2-wire Adaptor	KIT-SU-5E-D-*		●		●	●	●	●	●	●	●	●									
High Bay Sensor, 2-wire	SU-5S-2W-H-*		●		●	●	●														●
Ruggedized High Bay, 2-wire, White	SU-5S-2W-HRW-*		●	●	●	●	●														●
Ruggedized Low Bay, 2-wire, White	SU-5S-2W-LRW-*		●	●	●	●	●							●							

#### Additional Notes:

- Nulite is OEM certified and authorized to purchase and install Enlighted components into their luminaires. All products are fully tested at the factory and each product ships with UL compliance.
- Ordering Example:** Nulite Catalog #: LP13-D-35B-05-03-L35-D-1-1-WH-T1-W-048-8-ENL(KIT-SU-5E-D-\*). This catalog designation merely identifies luminaires that require Enlighted compatible integral fixture sensors. Additional hardware such as power packs and wiring harnesses are often required to operate sensors and offer compatibility to the overall control system. Nulite will coordinate with the Enlighted on these items and build into the price accordingly.
- Standard eldoLED Solodrive DALI drivers with integral power supply will be supplied with Enlighted enabled luminaires

### Vive (LV)

Lutron

[LEARN MORE](#)

#### Integral Fixture Sensors

Item Description	OEM Part #	Integral Sensor Options																			
		0-10v Dimming Control	DALI Dimming Control	IP rated (Outdoor)	Wireless Control	Daylight Harvesting	Occupancy Sensing	LA Series	Regolo 1	Regolo 2	Regolo 4	Regolo 6	RZ4	RXT	Pixie	Sottile	Tavo	Sero	Qub	Bounce	INT
Vive Integral Fixture Control with Sensor	DFCSJ-OEM-OCC		●		●	●	●	●	●	●	●	●									
Vive Integral Fixture Control (RF only)	DFCSJ-OEM-RF		●		●			●	●	●	●	●									

#### Additional Notes:

- Nulite is OEM certified and authorized to purchase and install Lutron components into their luminaires. All products are fully tested at the Nulite factory and each product ships with UL compliance.
- Ordering Example:** Nulite Catalog #: LP13-D-35B-05-03-L35-D-1-1-WH-T1-W-048-8-LV(DFCSJ-OEM-OCC). This catalog designation merely identifies luminaires that require Lutron compatible integral fixture sensors. Additional hardware such as power packs and wiring harnesses are often required to operate sensors and offer compatibility to the overall control system. Nulite will coordinate with the Lutron on these items and build into the price accordingly.
- Standard eldoLED Solodrive DALI drivers with integral power supply will be supplied with Enlighted enabled luminaires
- Recommended drivers for DFCSJ-OEM-OCC: Lutron Ecosystem, Osram Dexal DALI drivers, or Signify Xitanium DALI drivers

## PRODUCT SPECIFICATIONS AND INFORMATION

### HOUSING CONSTRUCTION

Fixture body is constructed of powder coat painted extruded aluminum and die cast aluminum end caps. Captive joining mechanism is a combination die formed sheet metal and zinc plated spring steel. All hardware is stainless steel. Wall mount brackets are die-formed cold rolled steel powder coat painted finish.

### LED DISCRETE OPTICAL ASSEMBLY

Replaceable one-piece optical assembly is comprised of an LED PCBA having high power LEDs coupled to clear acrylic TIR optics (35°, 50° or 80° beam patterns) and injection molded plastic baffle assembly available in black or white. Square optical light cells are 1.5" x 1.5". The sheet metal optical assembly is connected to power via quick wire disconnects. Max length of optical assembly is 4' and minimum length is 1'. Available CCT's are 3000K, 3500K, and 4000K. Also available CRI's are 80 or 90.

### STANDARD DIMMING LED DRIVERS

Standard constant current integral electronic 0-10v dimming input. Two standard driver options are available. Option **D** dims to 1% and option **DO** dims to 0% or OFF (the final 1 percent is a "step"). Both options are the same price and representative of the base fixture price. Options **D** and **DO** ship with 5 wires (Line Voltage- Black and White wires, Low Voltage- Purple and Pink wires, Ground- Green wire)

### DALI DRIVERS

Standard constant current DALI drivers available in either a dim to 1% (**ELE**) or dim to 0% (**ELS**). DALI fixtures ship with 5 wires (Line Voltage- Black and White wires, Low Voltage- Purple and Pink wires, Ground- Green wire)

### LIGHT OUTPUT

For bi-direct luminaires you must specify "direct" light output and "indirect" light output and the factory will tune or program each lighting channel. Available nominal direct or "Lumens Down" light outputs are **(03)** 300 lms/ft, **(05)** 500 lms/ft, and **(08)** 800 lms/ft. Available nominal indirect or "Lumens Up" light outputs are **(03)** 300 lms/ft, **(05)** 500 lms/ft, **(08)** 800 lms/ft, **(10)** 1000 lms/ft, **(13)** 3100 lms/ft. Each circuit or channel may be independently controlled and this can be specified in "circuiting" within the ordering information. Specifying a "2-2" enables independent dimming control of each channel.

### CIRCUITING

Each luminaire may have up to 2 line voltage (Power) circuits and 2 low voltage (control) circuits. Two power circuits are required for independent control of uplight and downlight in bi-direct luminaires, and low voltage control circuits are for independent dimming of each circuit.

#### Examples:

- **"1-1"**- 1 power circuit (Line Voltage) and 1 control circuit (Low Voltage) > 5 wires total (1 Black Wire "Hot", 1 White Wire "Neutral", 1 Green Wire "Ground", and 2 low voltage control wires, 1 Pink wire and 1 purple wire)
- **"2-2"**- 2 power circuits (Line Voltage) and 1 control circuit (Low Voltage) > 9 wires total (2 Black Wires "Hot", 2 White Wires "Neutral", 1 Green Wire "Ground", and 4 low voltage control wires, 2 Pink wires and 2 purple wires)

### BATTERY PACKS

Recyclable Ni-Cad battery pack, battery run time is 90 minutes. Recharge time of 24 hours. 6W or 10W battery packs are available. To calculate Battery Lumen Output, multiply luminaire efficacy by battery wattage. [example: 120 lms/watt **(120)** x **B10** Battery Wattage **(10)** = **1200** lumens of egress illumination for 90 minutes.] Battery option not available in fixtures less than 4', and other limitations apply, consult factory. Entire "direct" fixture housing is energized by battery for lengths up to 5'. Half of direct fixture is energized by battery for 6' - 8' housing lengths. Emergency or night light circuit available (requires additional power circuit). Battery fixtures ship with an additional orange "constant hot" wire.

### GENERATOR TRANSFER DEVICES

The GTD emergency lighting control device senses the loss of normal power and switches the AC driver input power connection to an unswitched, generator (or central inverter) supplied lighting circuit. GTD fixtures ship with 3 additional wires (orange wire "constant hot", black-red wire "generator hot", white-red wire "generator neutral").

### FIXTURE FINISHES

Standard finish is powder coat painted white (**W**), black (**B**) or silver (**S**). Consult factory for custom (**CC**) RAL colors price and availability. Fixture is also available in an array of hydro-dipped wood grain finishes. Additional price and set-up charges apply and lead time may be longer, consult factory.

### INSTALLATION AND MOUNTING

The LW14B is designed to mount to architectural wall surfaces, typically sheet rock frame-in construction. A rough-in junction box is required in addition to structural bracing within the wall for fixture support via factory provided mounting brackets. Refer to installation instructions at [www.nulite-lighting.com](http://www.nulite-lighting.com) for details.

### FIXTURE LENGTHS - LINEAR ROWS

Standard fixture lengths for individual or continuous row mounting are available in exact 1'(305mm) increments from 2' (610mm) to 8' (2438mm). Consult factory for custom lengths, limitations apply.

### STANDARD PATTERN LAYOUTS

The LA series may be configured into geometric patterns. Mitered housings may be configured into corners, X-intersections, T-Intersections and 120 degree "Y" patterns. Standard mitered angles of 45°, 60°, 90°, 120°, and 135° can be utilized to create an unlimited array of designs and layouts. Consult factory for custom angles. The submittal drawing (shop drawing) furnished by Nulite will adequately detail these configurations and sign-off is required to initiate production.

### WARRANTY

5-year limited warranty on LED and driver from date of shipment. Refer to the full warranty details on [www.nulite-lighting.com/products/184](http://www.nulite-lighting.com/products/184).

### WEIGHT

Fixtures are 1.5 lbs/ft, Driver box weights vary, consult factory.

### APPROVALS

ETL listed, conforms to UL Standard 1598 / 8750 and CSA Standard C22.2, indoor dry/damp locations.

### TESTING PROTOCOLS AND DATA

All of Nulite's LED components have been tested under **LM-80** guidelines insuring 6000 hours of luminous flux data. Additionally Nulite can supply **LM-79** data on all luminaires. This data includes luminous flux, electrical power, efficiency, chromaticity as well as the diffusion of luminous intensity.

### LUMEN MAINTENANCE

90% of initial light output (L90) at 100,000+ hours, 70% of initial light output (L70) at 200,000+ hours.