



### WARNINGS:

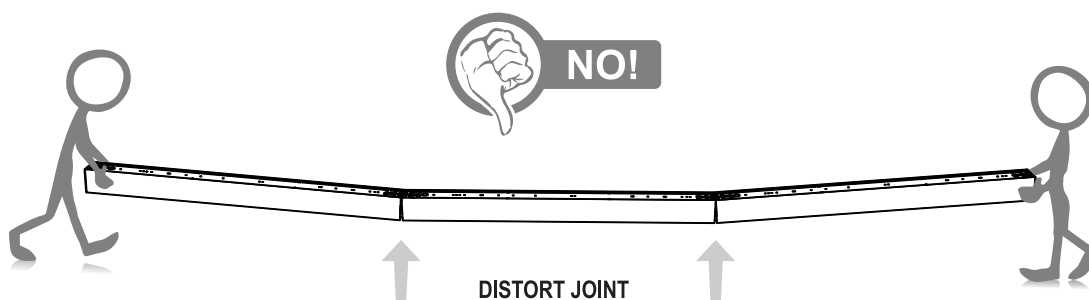
- Do not assemble continuous run on the ground and lift into place. Joints will distort and not create a tight fit. Joining hardware will have to be purchased and replaced.
- Risk of electrical shock or fire, disconnect power during installation or servicing. Read all instructions completely before starting installation. Install and wire in accordance to all national and local codes by a certified electrician. Fixture may be sharp, handle with care. Let fixture cool before maintenance.

### ADVERTENCIA:

Riesgo de descarga eléctrica o un incendio, desconecte la alimentación durante la instalación o servicio. Leer todas las instrucciones completas antes de empujar la instalación. Instalar y cablear en acuerdo a las reglas nacionales y códigos locales por un electricista certificado. El accesorio puede estar agudo, agarre con cuidado deje que el accesorio. Enfriar antes de mantenimiento.

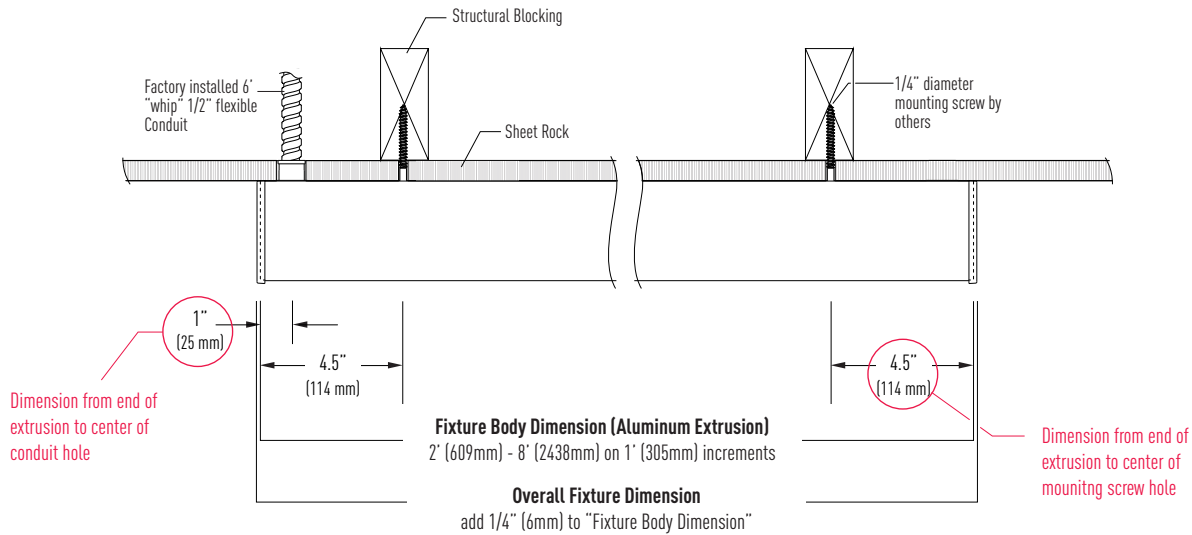
### AVERTISSEMENTS:

- Risque d'électrocution ou d'incendie. Déconnectez l'alimentation durant l'installation ou la maintenance. Lisez attentivement toutes les instructions avant de commencer toute installation. Faites installer et câbler selon les normes Nationales et Locales par un électricien certifié. Les installations peuvent être coupantes, à manipuler avec précaution. Laissez refroidir les installations avant une opération de maintenance.

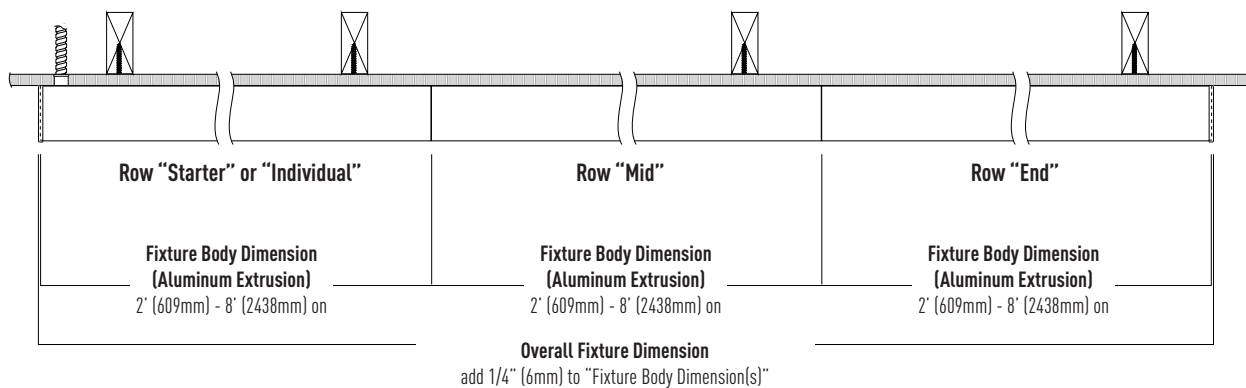


### INSTALLATION AND MOUNTING DETAILS

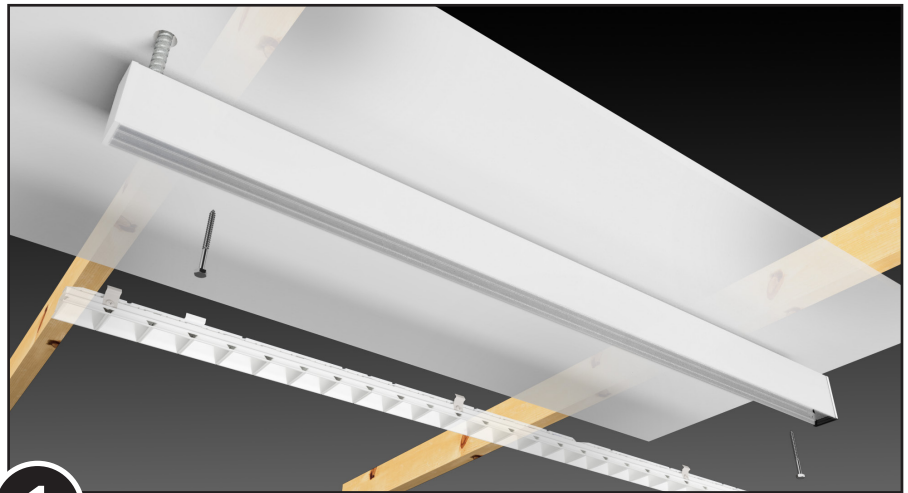
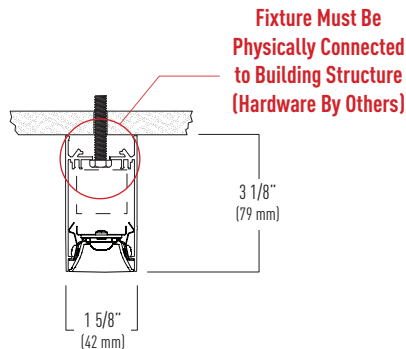
#### Inaccessible Ceilings (Sheet Rock Typical)



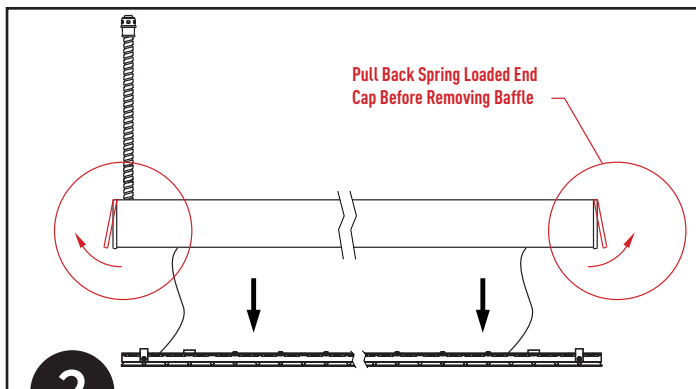
### ROW LAYOUT DETAILS



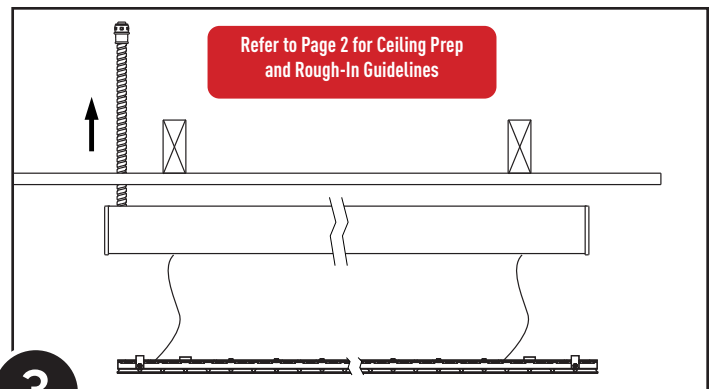
## INSTALLING AN INDIVIDUAL OR ROW- STARTER LUMINAIRE



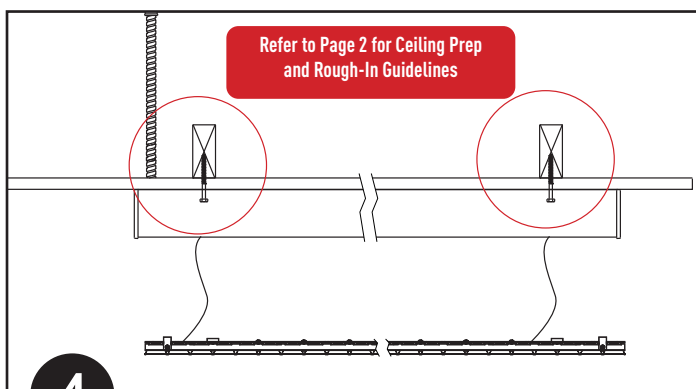
**1** Appropriate Tradesmen to Prepare Ceiling, Electrical Whip and Blocking (or All-Thread) As Shown, and then Make Ceiling Cut-Out



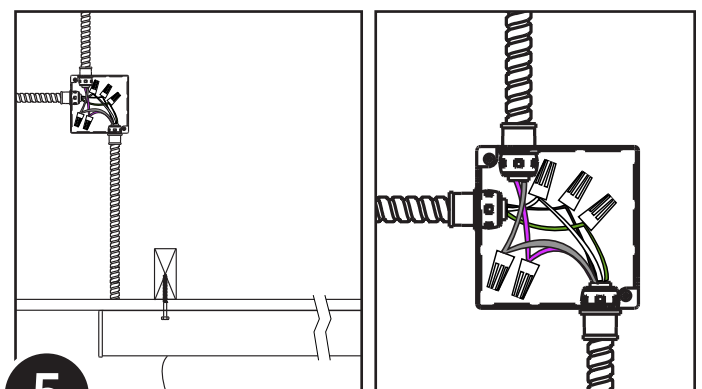
**2** Carefully Remove Baffle Assembly With Flathead Screwdriver or Small Pick



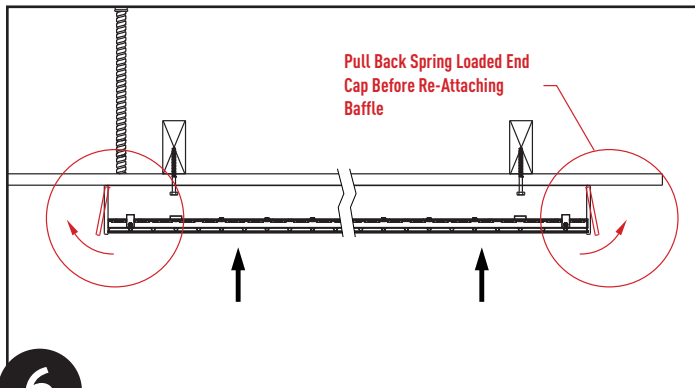
**3** Feed Pre-Attached Flex Conduit Through Hole In Drywall



**4** Secure Fixture To Structure Through Predrilled Holes Inside Fixture With Hardware By Others



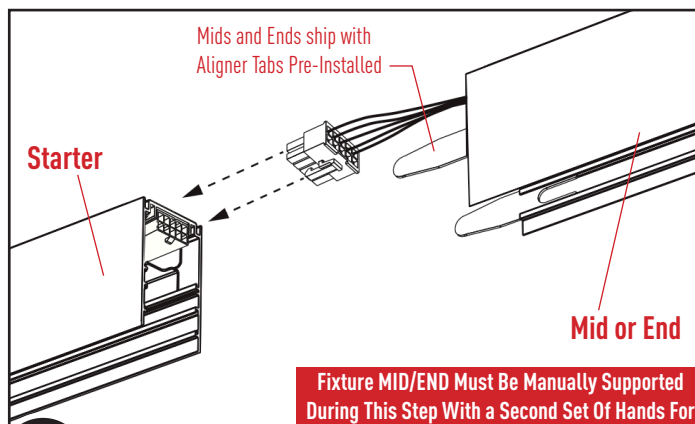
**5** Make Wire Connections, Hot (Black), Neutral (White), and Ground (Green) connections, as well as Low Voltage Control Wire Connections (Purple, Gray)



6

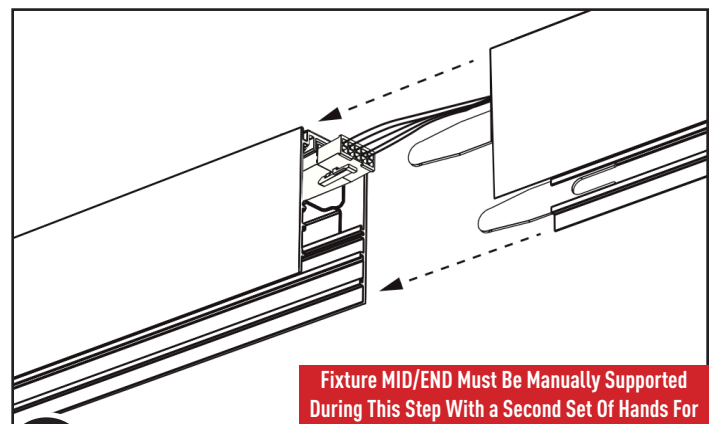
**Re-Attach Baffle, Energize Luminaire! You are Done.. Great Job!!!**

## INSTALLING A MID OR ROW-END IN A CONTINUOUS ROW



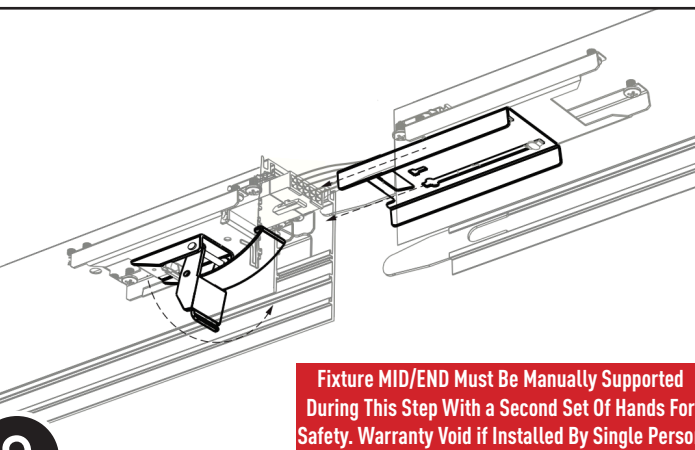
7

**Pull Out Male Wire Harness In Next Fixture In Row and Align To Female Harness In First Fixture**



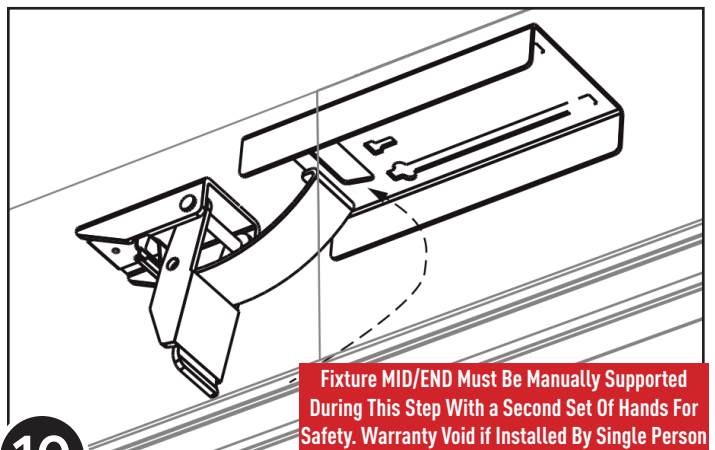
8

**Make Quick Wire Connection of Power and Low Voltage Control Thru-Wiring**



9

**Slide Out Joining Bracket In Next Fixture**



10

**Align Joining Buckle In First Fixture To Slot In Bracket In Second Fixture**

