

RECESSED CEILING MOUNTED
(Supported By Hard Ceiling)
Steps 1-9 On Pages 4-5
Steps 11-21 On Pages 6-7



BAR HANGER MOUNTED
Steps 1-10 On Pages 8-9
Steps 11-21 On Pages 6-7

WARNINGS:

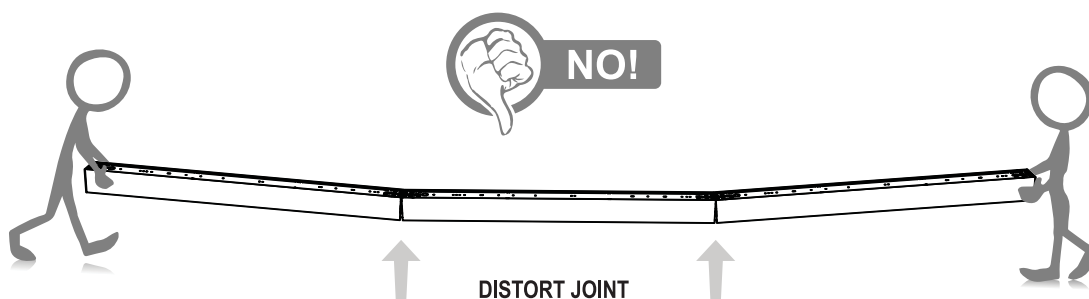
- Do not assemble continuous run on the ground and lift into place. Joints will distort and not create a tight fit. Joining hardware will have to be purchased and replaced.
- Risk of electrical shock or fire, disconnect power during installation or servicing. Read all instructions completely before starting installation. Install and wire in accordance to all national and local codes by a certified electrician. Fixture may be sharp, handle with care. Let fixture cool before maintenance.

AVERTISSEMENTS:

- Risque d'électrocution ou d'incendie. Déconnectez l'alimentation durant l'installation ou la maintenance. Lisez attentivement toutes les instructions avant de commencer toute installation. Faites installer et câbler selon les normes Nationales et Locales par un électricien certifié. Les installations peuvent être coupantes, à manipuler avec précaution. Laissez refroidir les installations avant une opération de maintenance.

ADVERTENCIA:

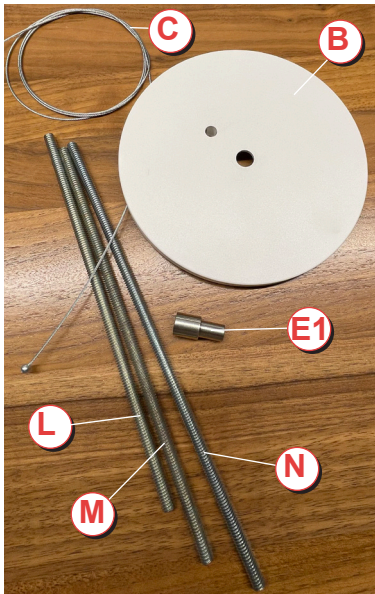
- Riesgo de descarga eléctrica o un incendio, desconecte la alimentación durante la instalación o servicio. Leer todas las instrucciones completas antes de empujar la instalación. Instalar y cablear en acuerdo a las reglas nacionales y códigos locales por un electricista certificado. El accesorio puede estar agudo, agarre con cuidado deje que el accesorio. Enfriar antes de mantenimiento.



LIGHTING SYSTEM COMPONENTS

Every luminaire will have a companion driver enclosure, not all luminaires and driver enclosures are the same, please be sure to pair the proper driver enclosure to the proper luminaire by reading the packaging labels and referencing submittal documents

Power Feed Mounting Kit



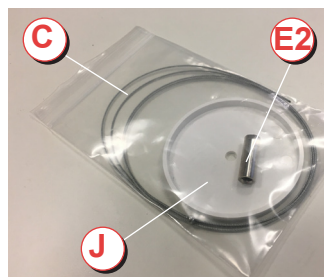
Item	Qty	Item Description
A	1	"GP" Driver Enclosure
B	1	5.75" Diam. Power Canopy
C	1	Aircraft Cable (48" or 120")
E1	1	Cable Coupler (2 pcs threaded together)
L	1	8.25" Threaded Rod (Recessed Ceiling Mount Only)
M	1	8.75" Threaded Rod (5/8" ceiling thickness)
N	1	9.5" Threaded Rod (1-1/4" ceiling thickness)

Power Feed components ship within the Driver Enclosure box.

Non-Power Feed Mounting Kit



Non Power Feed
Mounting Kits Ship In
Separate Box



Item	Qty	Item Description
C	1	Aircraft Cable (48" or 120")
E2	1	Cable Coupler
J	1	2"Diam. Non Power Canopy

Non-Power feed components ship individually packaged in separate hardware boxes.

Light Fixture



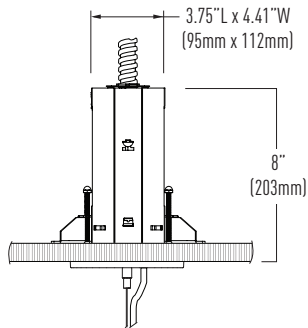
Item	Qty	Item Description
K	1	Light Fixture (2'[609mm] - 8'[2438mm])

Each fixture is individually boxed, fixture ships with power cord attached

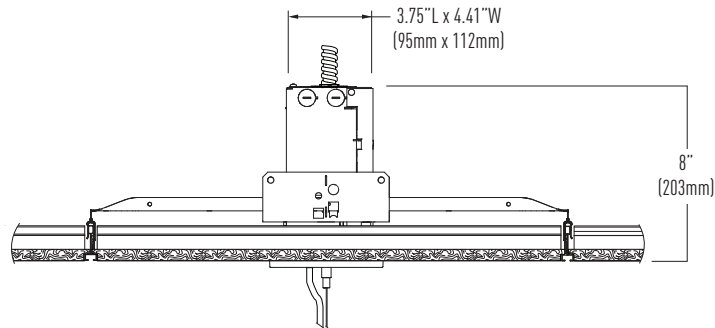
INSTALLATION AND MOUNTING DETAILS

Recessed Canopy Integrated Driver Enclosure for Inaccessible and Grid Ceilings Ceiling Option GP

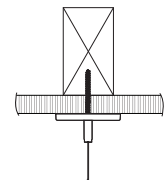
GP (End View)



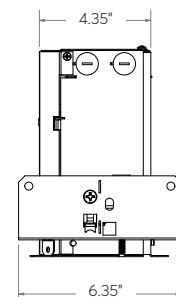
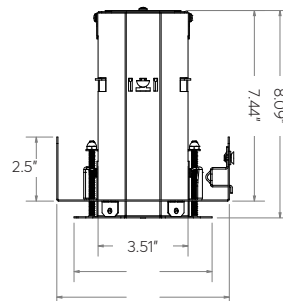
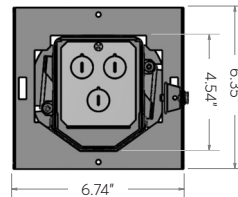
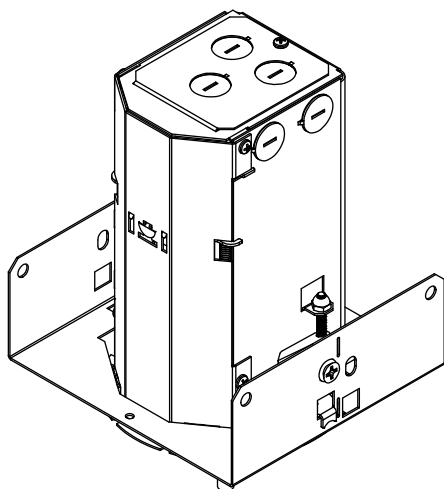
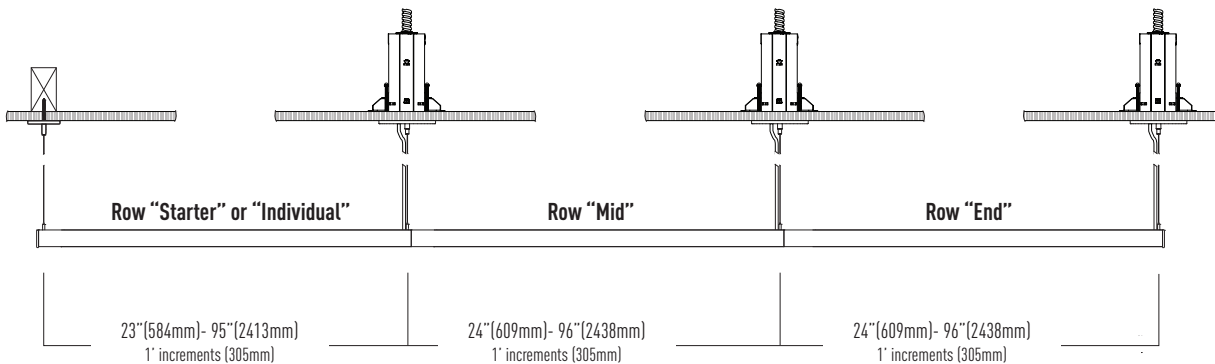
GP (Side View)



Non-Power
canopy

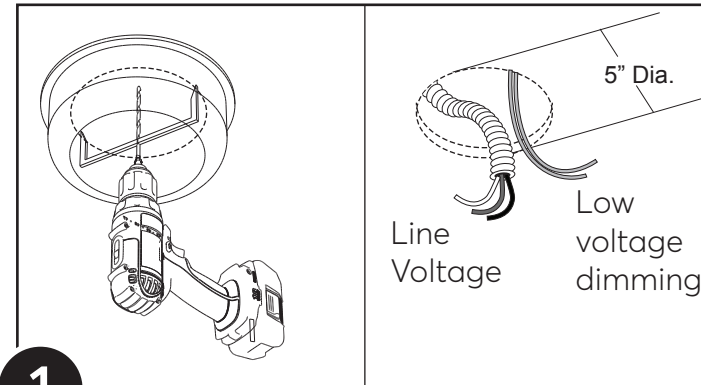
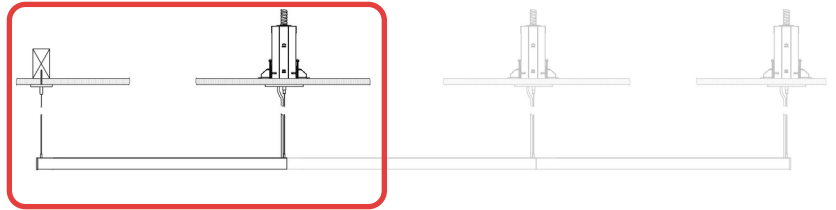


Row Layout Guidelines Ceiling Option GP



INSTALLING AN INDIVIDUAL OR ROW- STARTER LUMINAIRE

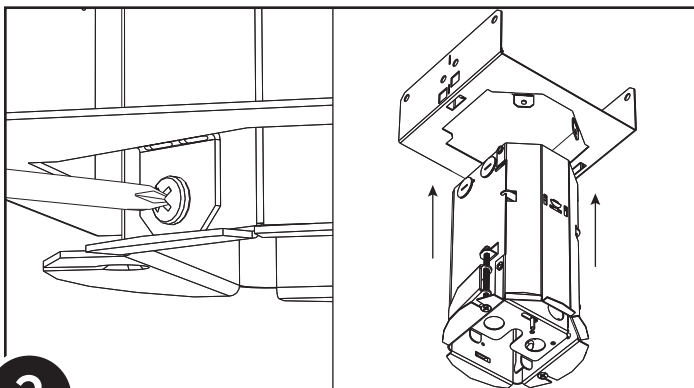
Ceiling Recessed Mounted
(Supported By Hard Ceiling)



*Refer to page 3 Installation and Mounting Details for proper location of Canopy

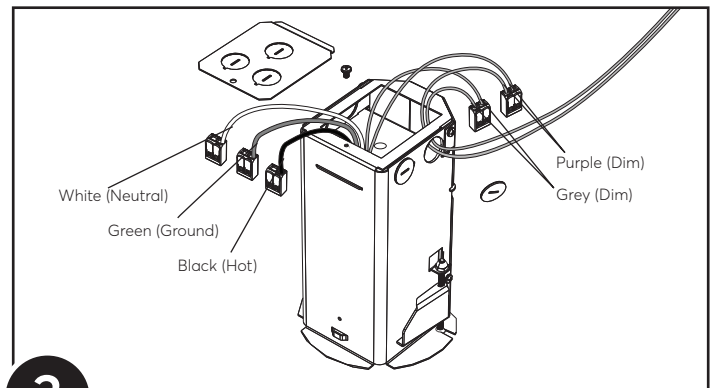
1

Cut 5" Diameter hole into sheet rock and pull wires through hole



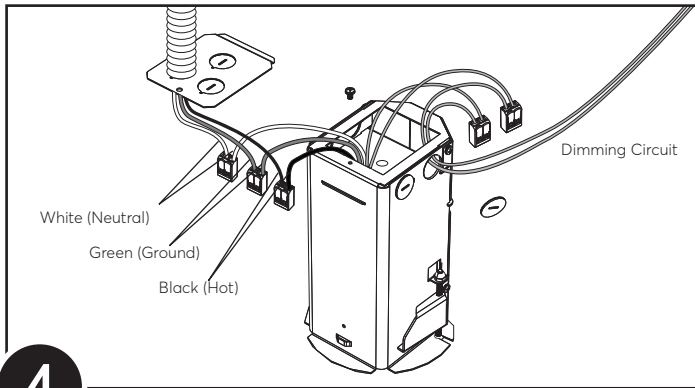
2

Remove and discard hanger bar flange after removing 3 screws



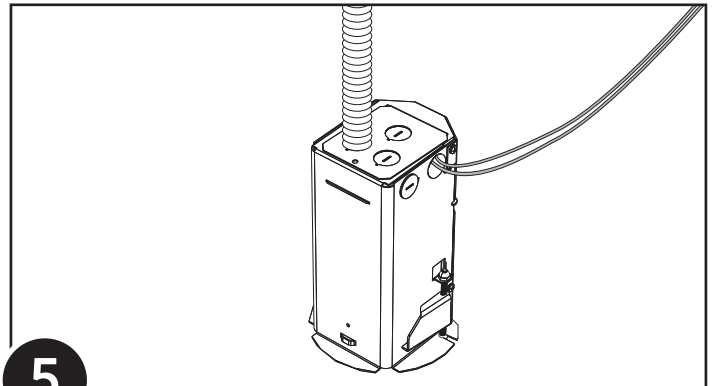
3

Remove top access cover and make low dimming wire connections if necessary



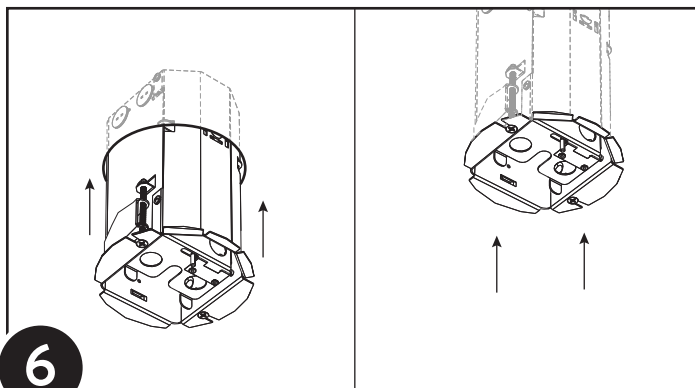
4

Make building line voltage wire connections



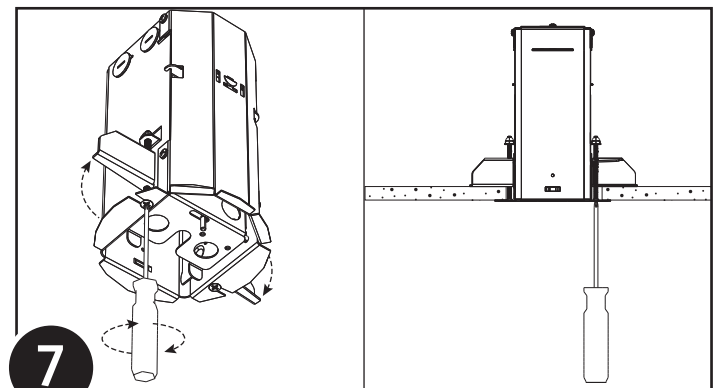
5

Re-attach splice cover



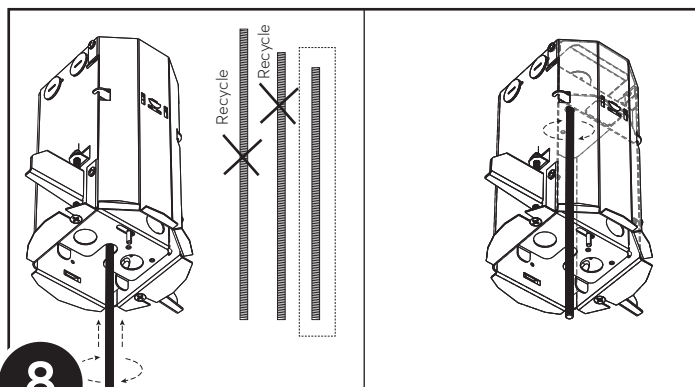
6

Insert driver enclosure into ceiling



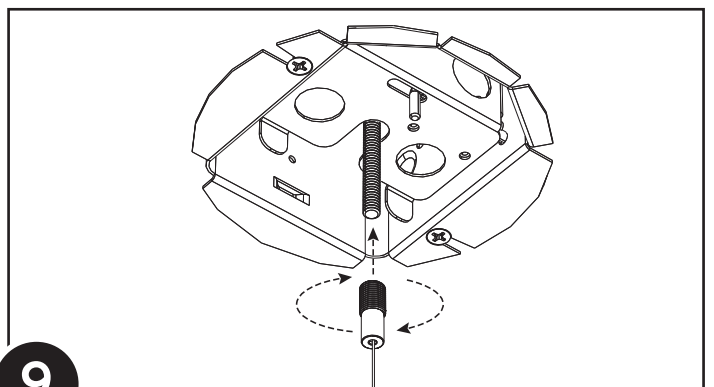
7

Rotate two philips screws clock wise to secure brackets to sheet rock



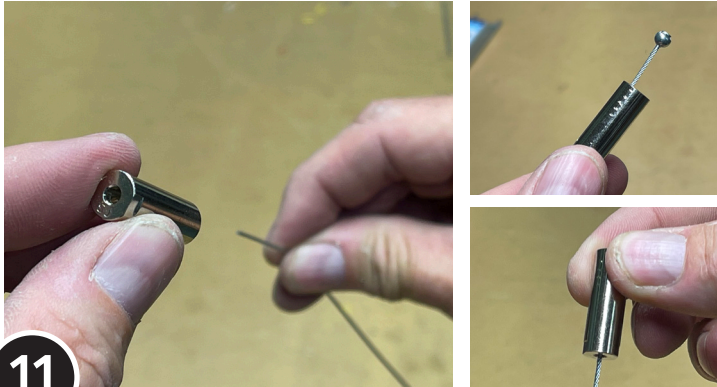
8

Install the smallest threaded rod into center of driver enclosure



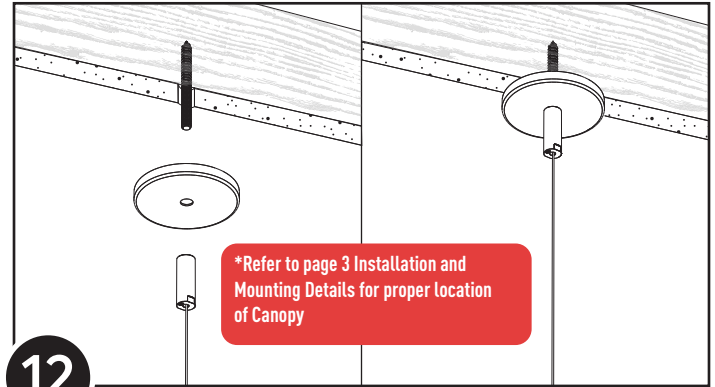
9

Connect coupler and aircraft cable to threaded stem



11

Locate Aircraft Cable and Cable Couplers and Create Non-Power Suspension Cable Assembly



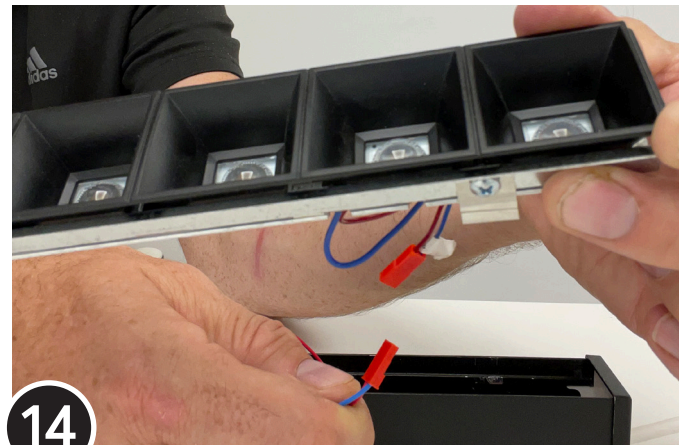
12

Install 1/4-20 threaded hardware (by others) and install non-power cable assembly



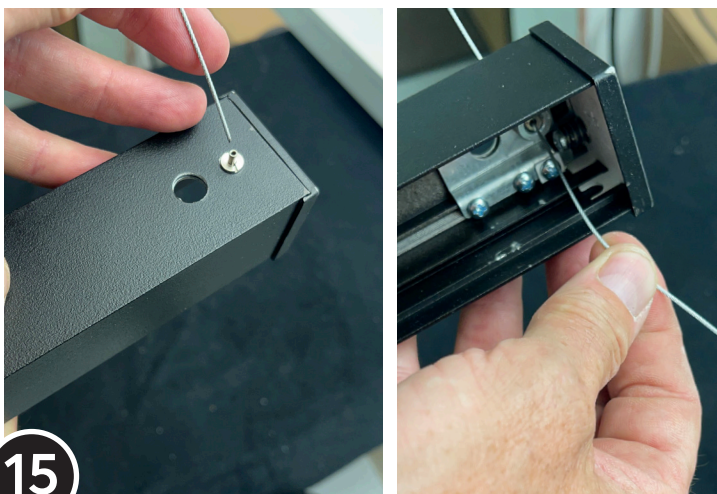
13

On a Clean Level Surface Remove LED Baffle Assembly



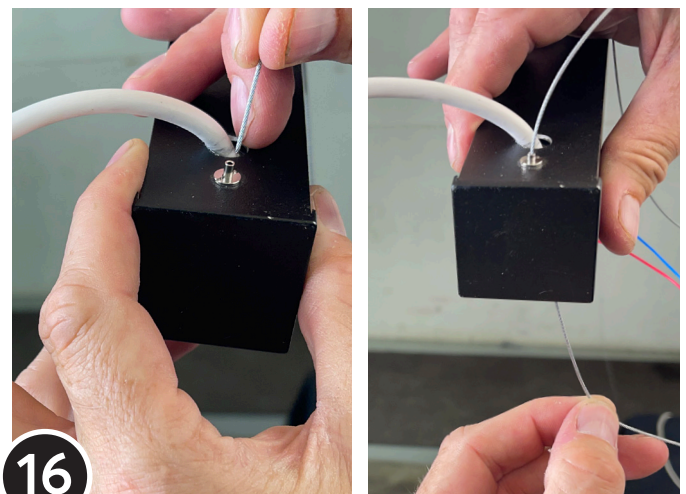
14

Disconnect LED Baffle Assembly and Set Aside Until Final Installation Step



15

Attach Non-Power Side Cable and Pull Slack Through Fixture



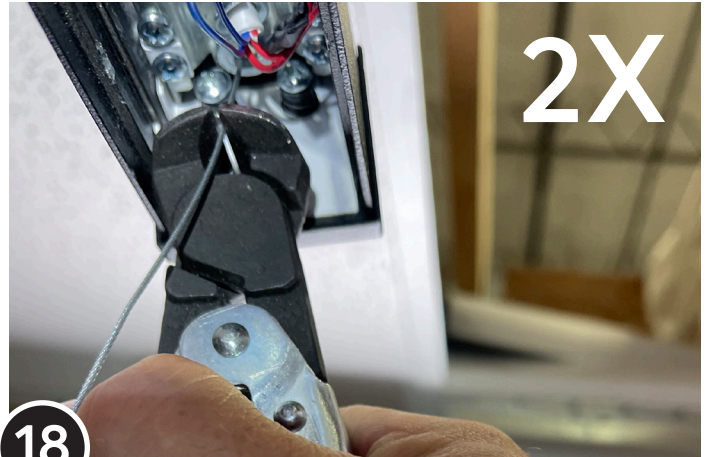
16

Attach Power Side Cable and Pull Slack Through Fixture



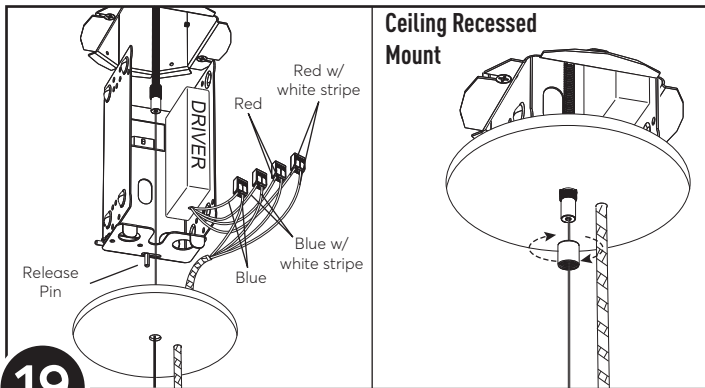
17

Level Fixture



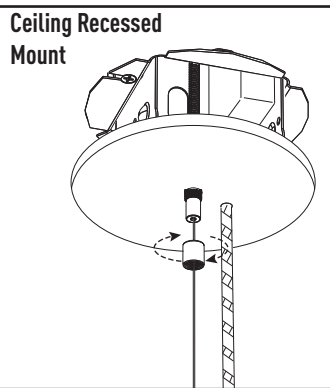
18

Trim Excess Cable

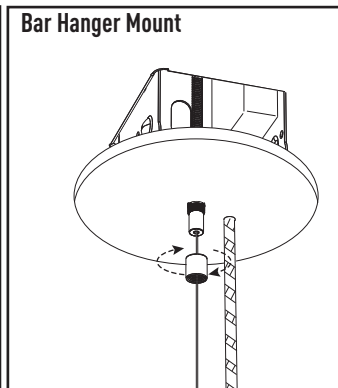


19

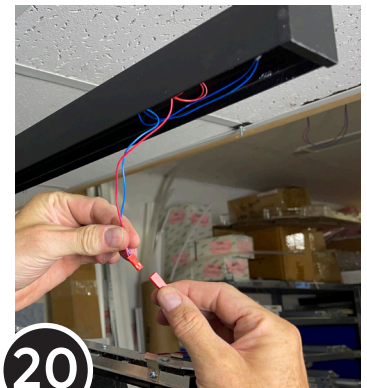
Remove driver cartridge by pushing release pin, and make low voltage wire connection for fixture-power cord, then push driver assembly back into enclosure and attach 5" canopy as shown



Ceiling Recessed Mount



Bar Hanger Mount



20

Reconnect Baffle Wires



20

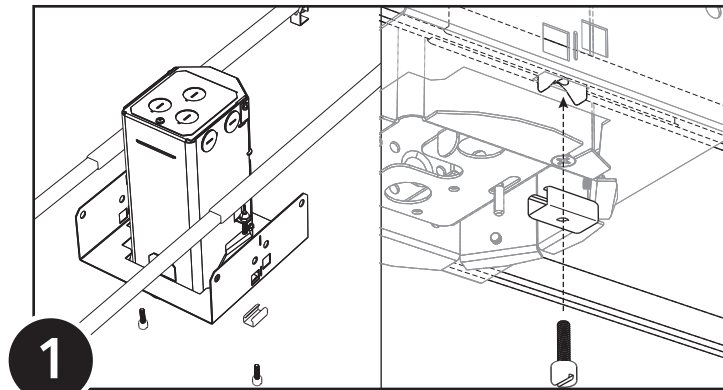
Snap Baffle Assembly Back Into Place



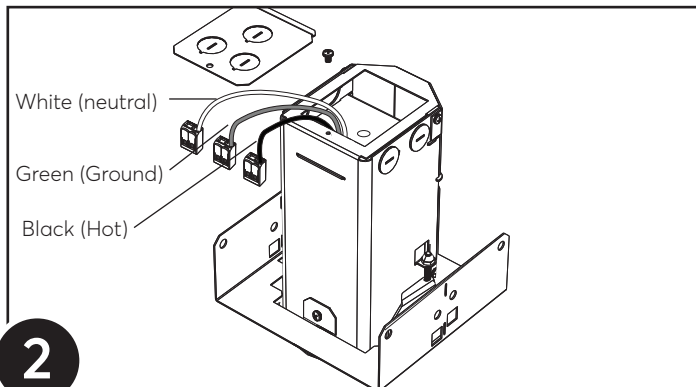
21

Energize Luminaire! You are Done! Go Play Golf!

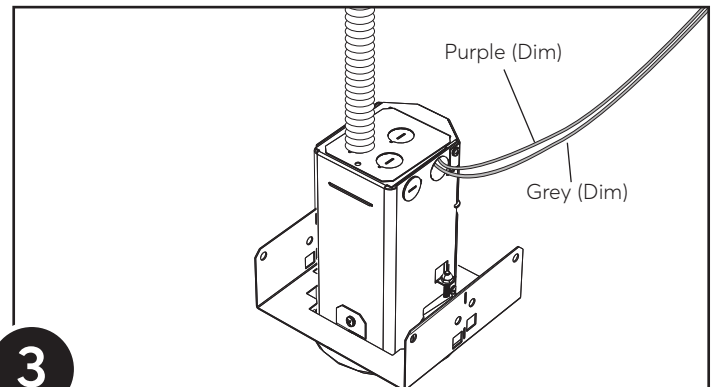
Bar Hanger Mount



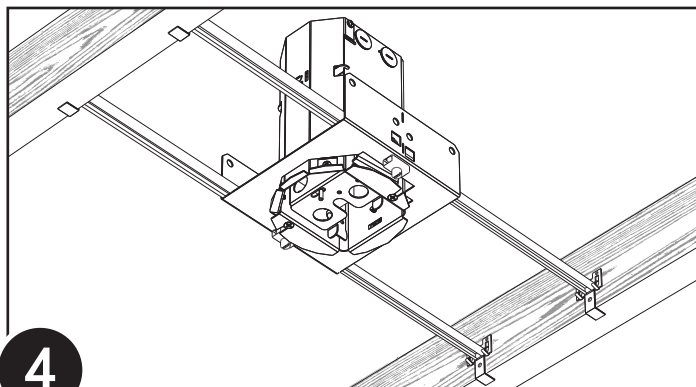
1 Attach hanger bars (by others) to mounting flange



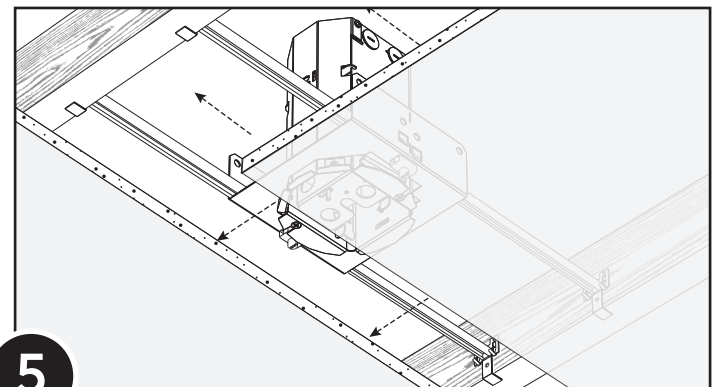
2 Remove splice cover and make line and low voltage wire connections



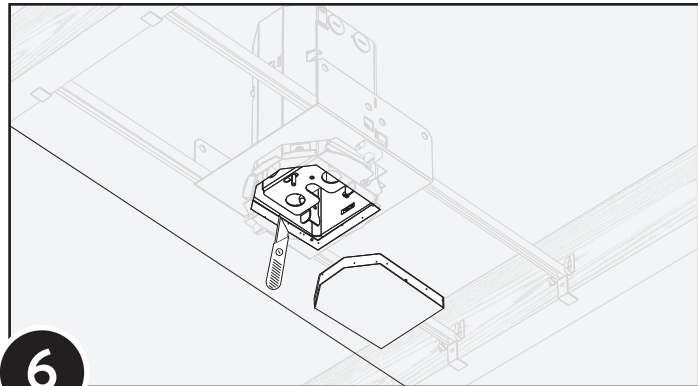
3 Re-attach splice cover



4 Mount driver enclosure / bar hanger assembly to building joist as shown

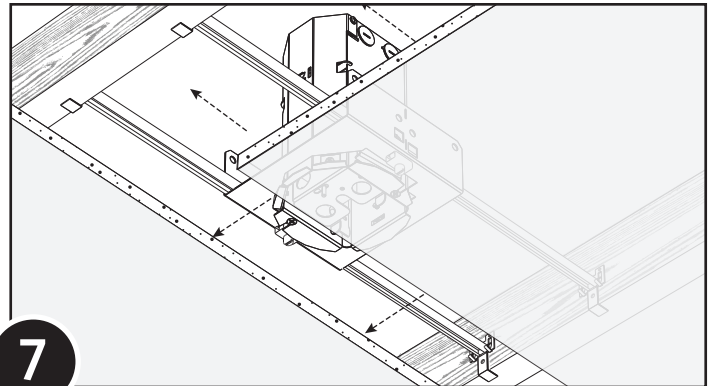


5 Sheet Rock tradesman to install sheet rock or hard ceiling



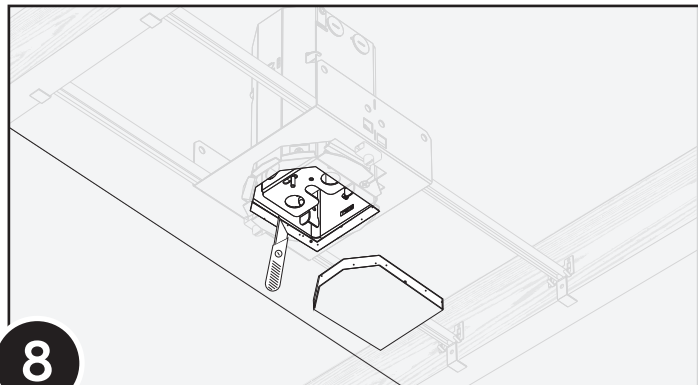
6

Make sheet rock cut-out



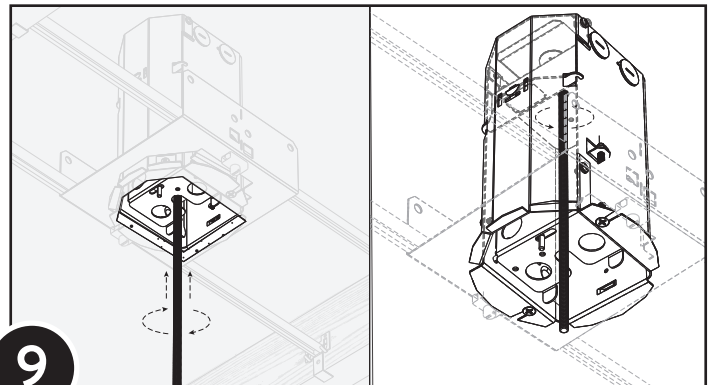
7

Sheet Rock tradesman to install sheet rock or hard ceiling



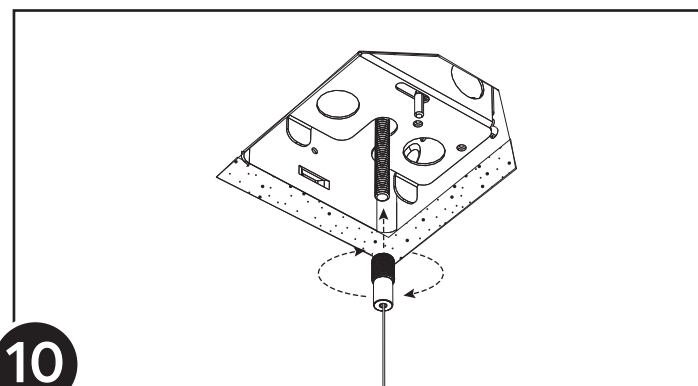
8

Make sheet rock cut-out



9

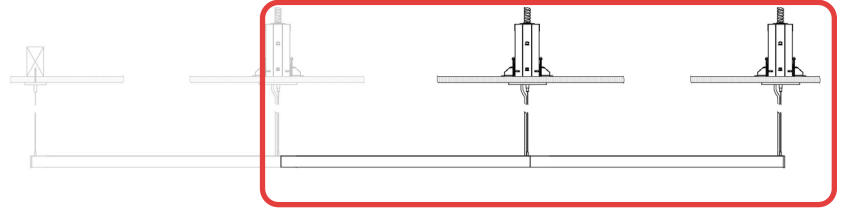
Choose proper threaded rod (8.75" threaded rod for 5/8" sheetrock and 9.5" threaded rod for 1.25" sheet rock), then install threaded rod into center of enclosure



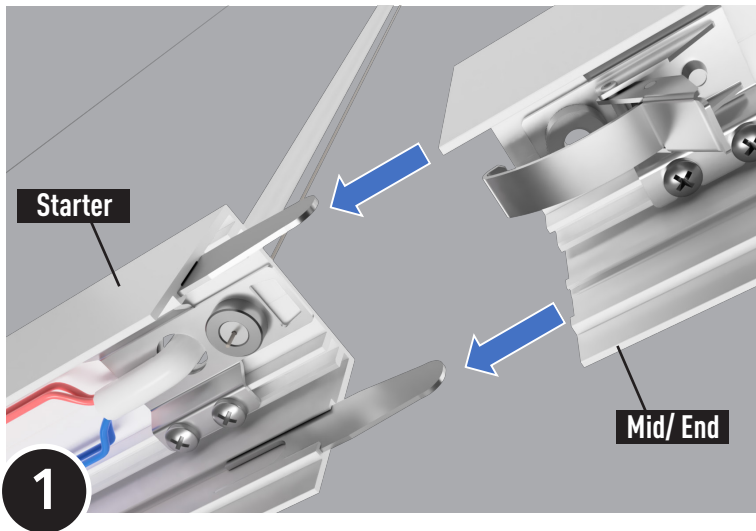
10

Connect coupler hardware and aircraft cable to threaded rod

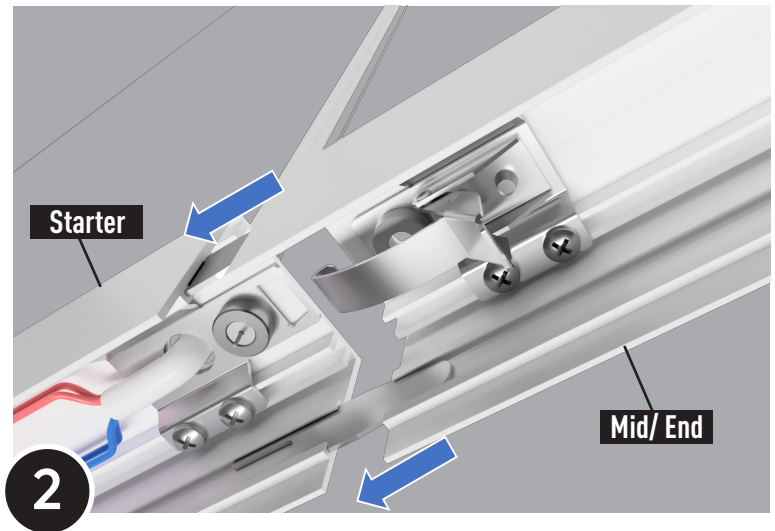
INSTALLING A MID OR END LUMINAIRE



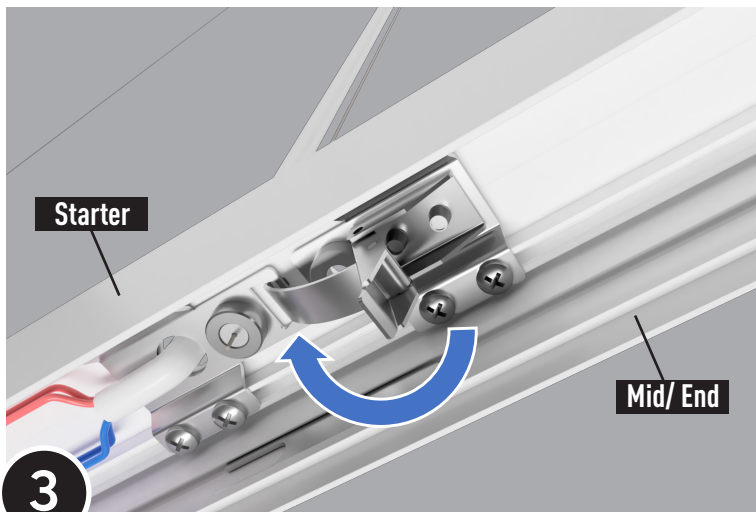
The installation of a MID or END Luminaire is the same as a STARTER except there is only one Power Cord suspension mount required, there will not be a Non-Power mount. The fixture latches to the previous fixture on the non-power side as illustrated below.



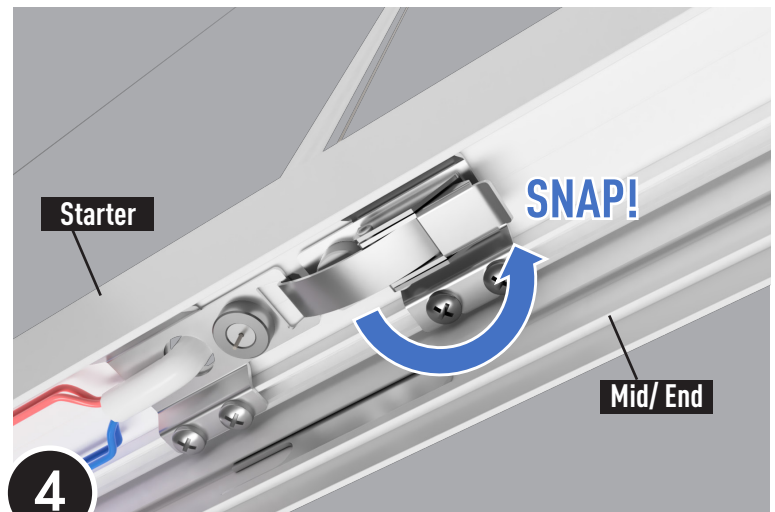
1 Align MID fixture with Aligner-Tabs in Start fixture



2 Slide fixtures together



3 Rotate Joining-Buckle into slot



4 Snap buckle for final fixture engagement