



WARNINGS:

- Do not assemble continuous run on the ground and lift into place. Joints will distort and not create a tight fit. Joining hardware will have to be purchased and replaced.

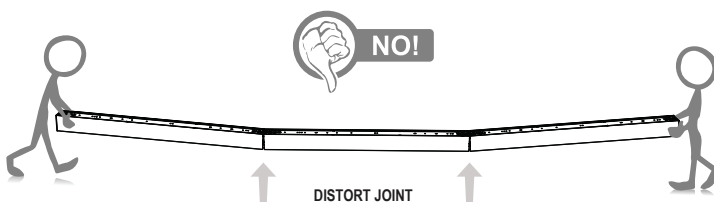
- Risk of electrical shock or fire, disconnect power during installation or servicing. Read all instructions completely before starting installation. Install and wire in accordance to all national and local codes by a certified electrician. Fixture may be sharp, handle with care. Let fixture cool before maintenance.

AVERTISSEMENTS

- Risque d'électrocution ou d'incendie. Déconnectez l'alimentation durant l'installation ou la maintenance. Lisez attentivement toutes les instructions avant de commencer toute installation. Faites installer et câbler selon les normes Nationales et Locales par un électricien certifié. Les installations peuvent être coupantes, à manipuler avec précaution. Laissez refroidir les installations avant une opération de maintenance.

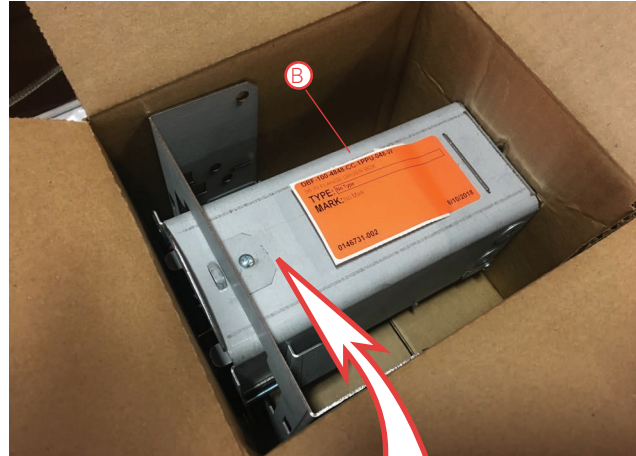
ADVERTENCIA

- Riesgo de descarga eléctrica o un incendio, desconecte la alimentación durante la instalación o servicio. Leer todas las instrucciones completas antes de empezar la instalación. Instalar y cablear en acuerdo a las reglas nacionales y códigos locales por un electricista certificado. El accesorio puede estar agudo, agarre con cuidado deje que el accesorio. Enfriar antes de mantenimiento.



LIGHTING SYSTEM COMPONENTS

Every luminaire will have a companion driver enclosure, not all luminaires and driver enclosures are the same, please be sure to pair the proper driver enclosure to the proper luminaire by reading the packaging labels



A. Luminaire (4 Types - see next page for hardware details for each luminaire type)

- A1- Individual
- A2-Row/Starter
- A3-Row/Mid
- A4-Row/End

B. GP Driver Enclosure (For Inaccessible Ceilings)

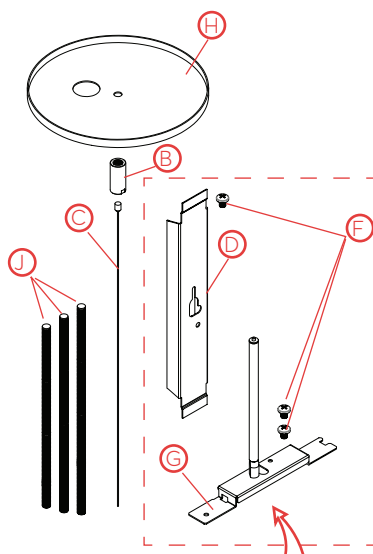
C. Mounting Hardware (Included within Grid Driver Enclosure)

- C1- Power Mount Hanging Hardware Package
- C2- Non Power Mount Hanging Hardware Package

Mounting Hardware ships within driver enclosure box

C1-Power Mount Hardware Kit

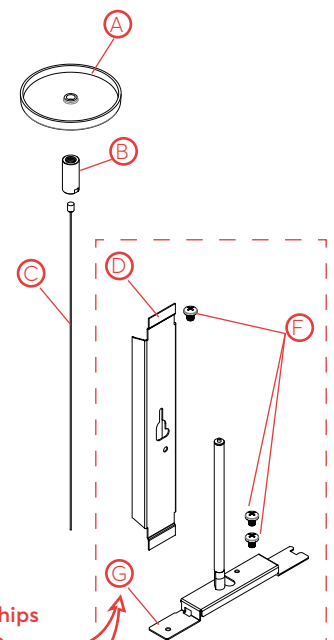
- B. (1) Aircraft Cable Coupler
- C. (1) Aircraft Cable (Specify eith 48" or 120")
- D. (1) Decorative Cover
- F. (3) White Screws for Decorative Cover and Stem Assembly
- G. Mounting Stem Assembly
- J. Choose 1 or 3 Threaded Stems
 - (1) 8.25" Threaded Stem 1/4-20 (For Retrofit Only)
 - (1) 8.75" Threaded Stem 1/4-20 (New Construction 5/8" Sheet Rock)
 - (1) 9.5" Threaded Stem 1/4-20 (for 1 1/4" sheet rock)
- H. 5" Power Canopy



D,F and G Ships in Luminaire package

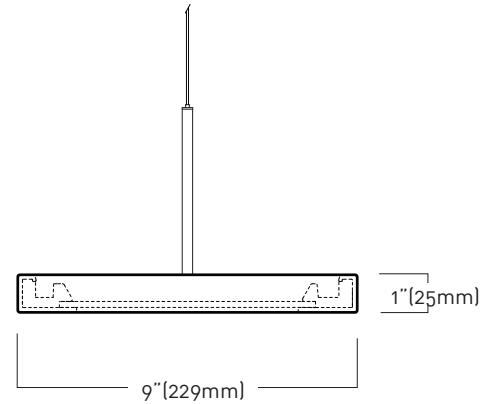
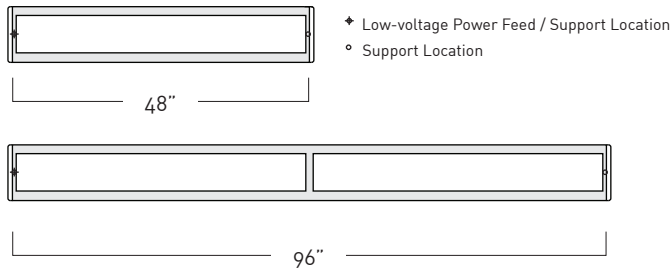
C2-Non-Power Mount Hardware Kit

- A. (1) 3" Non Power Canopy
- B. (1) Aircraft Cable Coupler
- C. (1) Aircraft Cable (Specify eith 48" or 120")
- D. (1) Decorative Cover
- F. (3) White Screws for Decorative Cover and Stem Assembly
- G. Mounting Stem Assembly

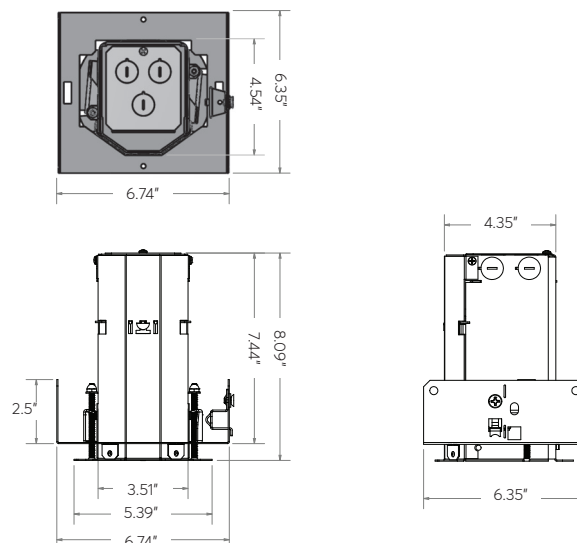
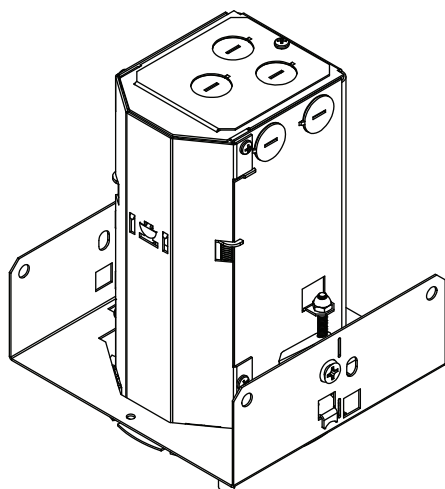


D,F and G Ships in Luminaire package

LUMINAIRE DIMENSIONS



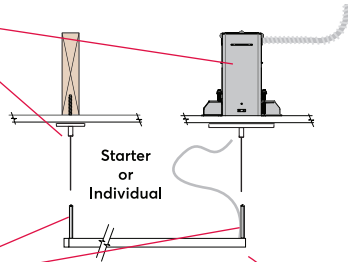
DRIVER ENCLOSURE DIMENSIONS



INSTALLING AN INDIVIDUAL OR ROW STARTER LUMINAIRE

STEP 1

Install Driver Enclosure and hanging hardware

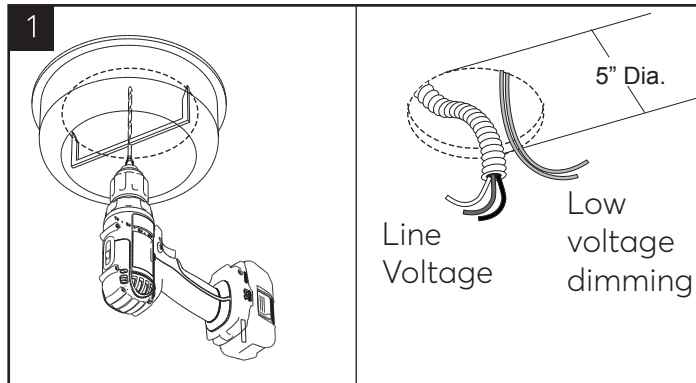
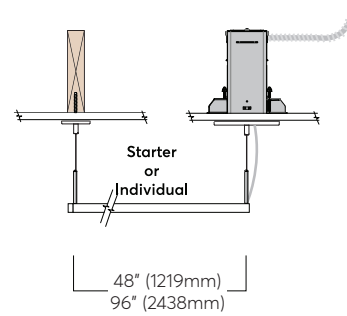


STEP 2

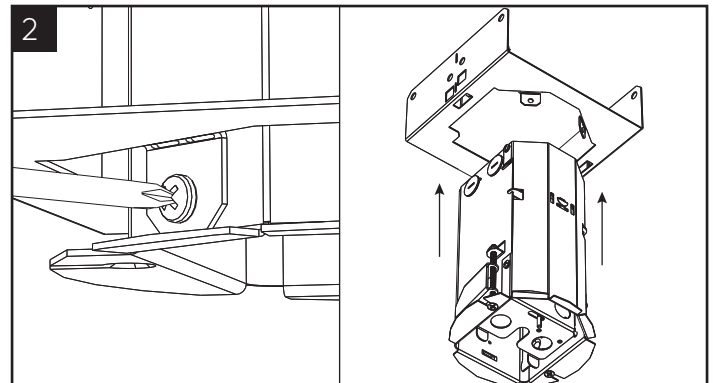
Install luminaire stems

STEP 3

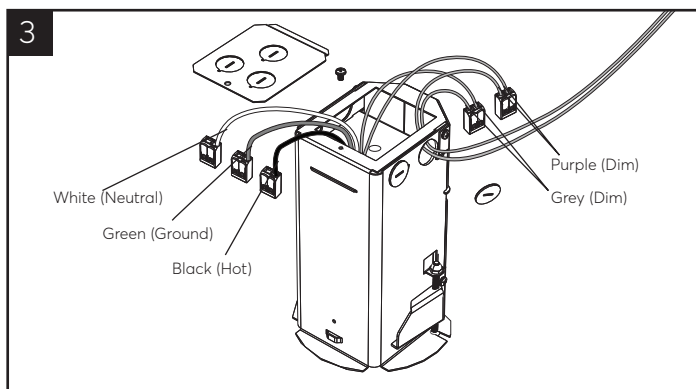
Hang Luminaire



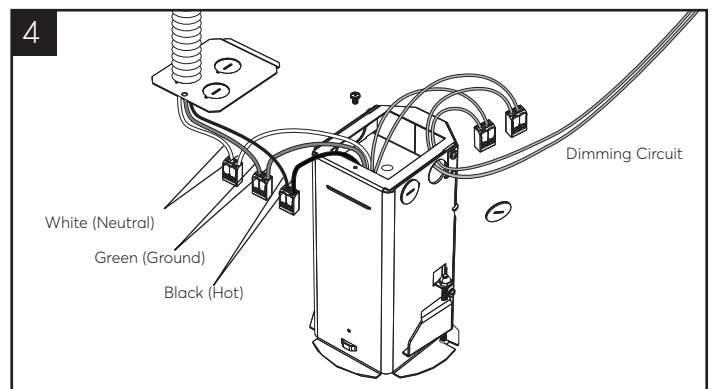
Cut 5" Diameter hole into sheet rock and pull wires through hole



Remove and discard hanger bar flange after removing 3 screws

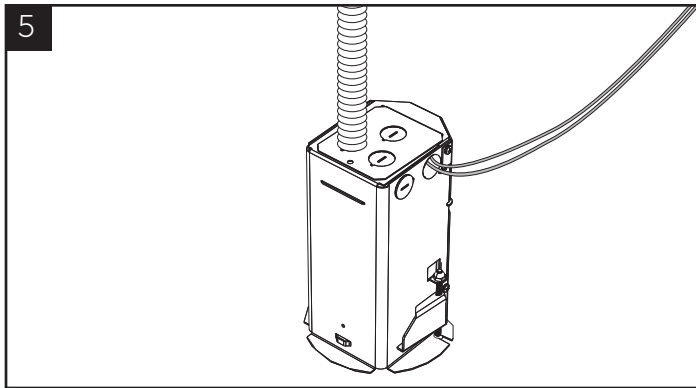


Remove top access cover and make low dimming wire connections if necessary

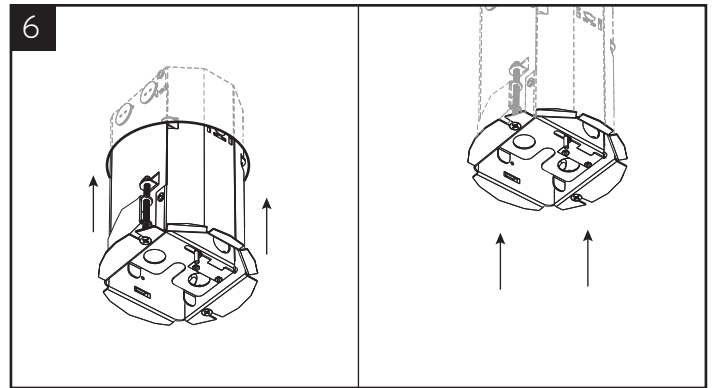


Make line voltage wire connections

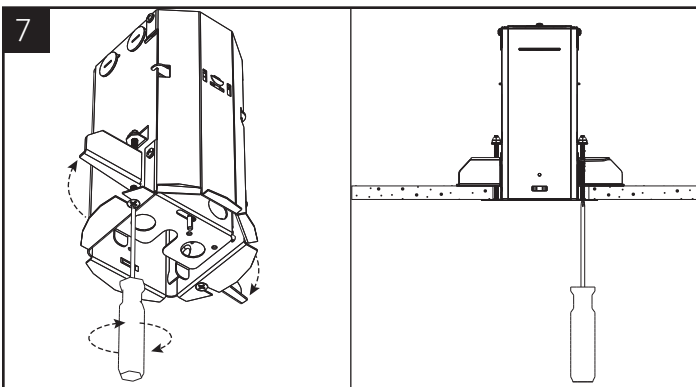
INSTALLING AN INDIVIDUAL OR ROW STARTER LUMINAIRE



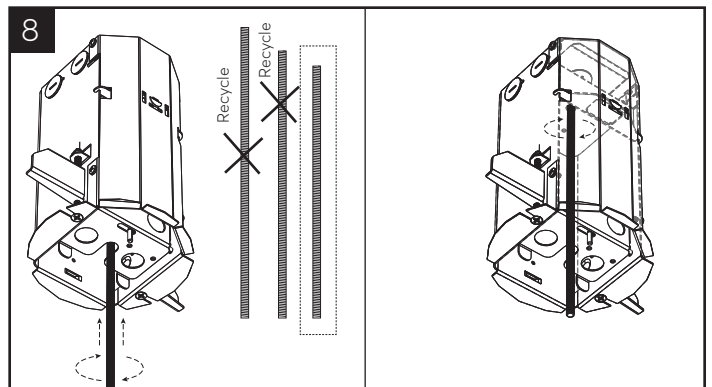
re-attach splice cover



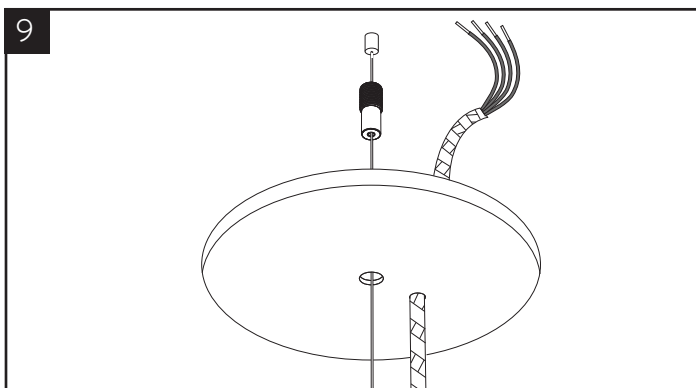
Insert driver enclosure into ceiling



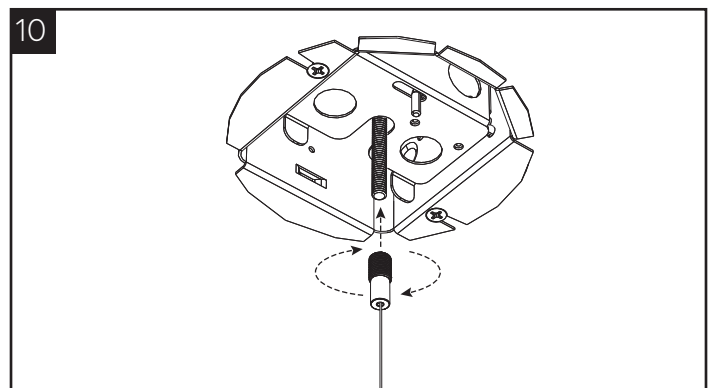
Rotate two philips screws clock wise to secure brackets to sheet rock



Install the smallest threaded rod into center of driver enclosure

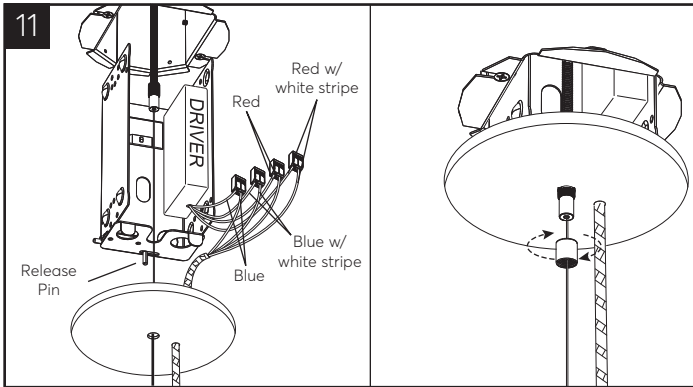


Thread cord, coupler and aircraft cable into canopy as shown

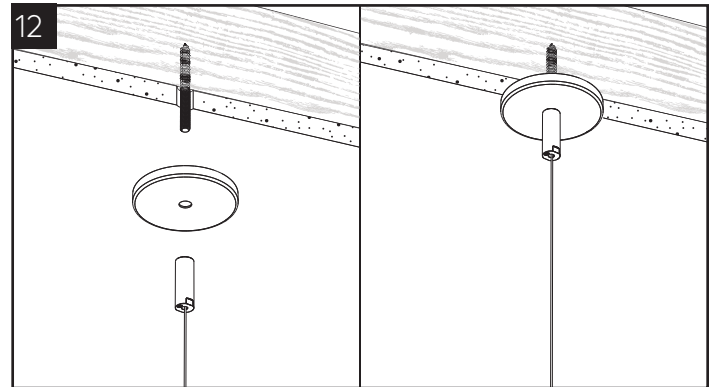


Connect coupler and aircraft cable to threaded stem

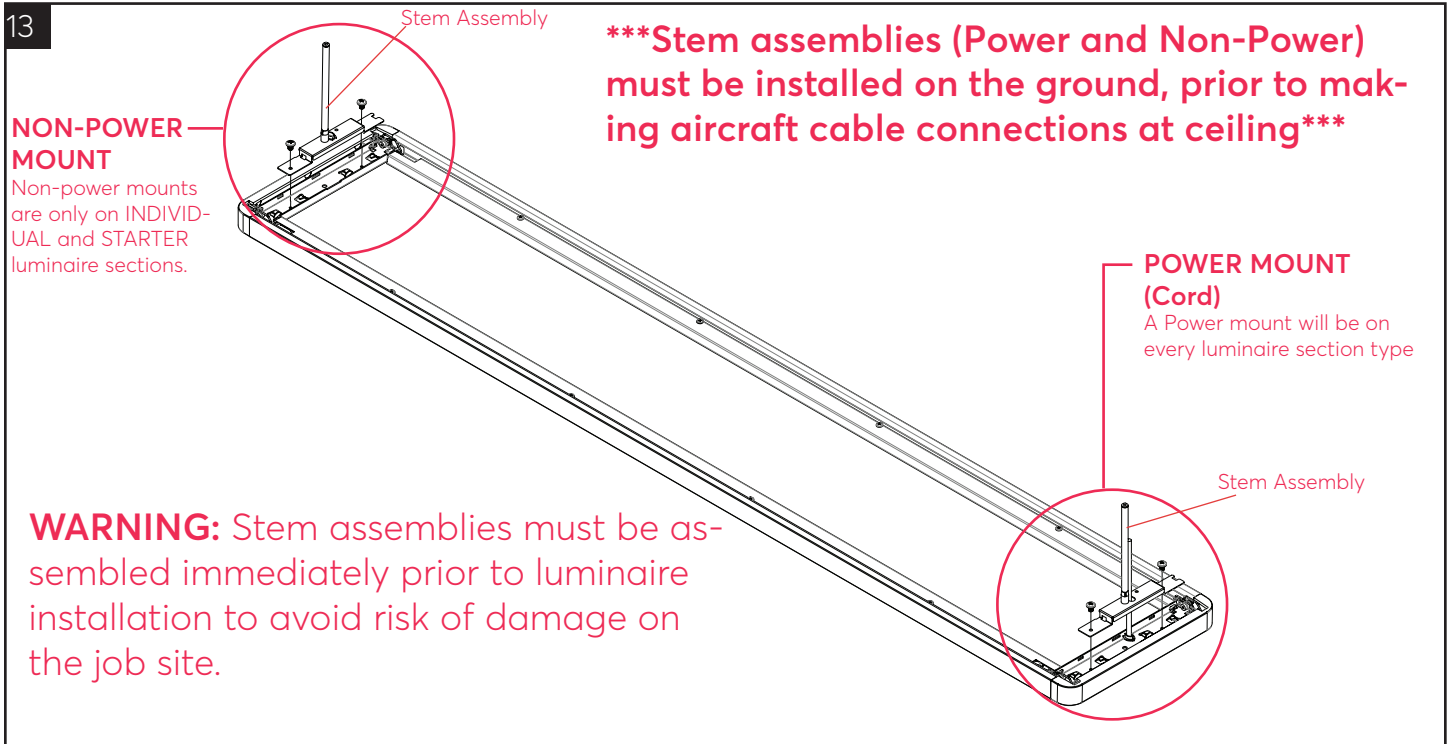
INSTALLING AN INDIVIDUAL OR ROWSTARTER LUMINAIRE



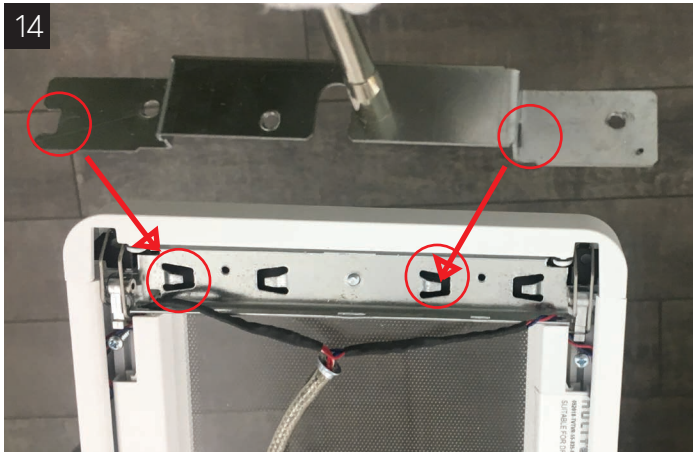
Remove driver cartridge by pushing release pin, and make low voltage wire connection, then push driver assembly back into enclosure and attach 5" canopy as shown



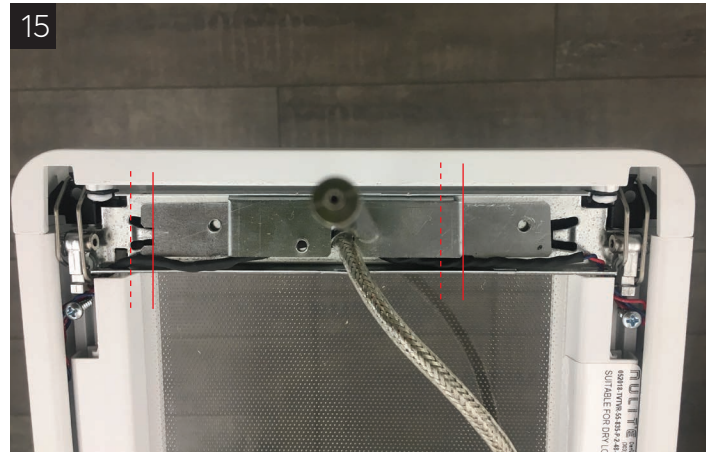
Screw threaded coupler and non-power canopy onto mounting stem to physically hang luminaire



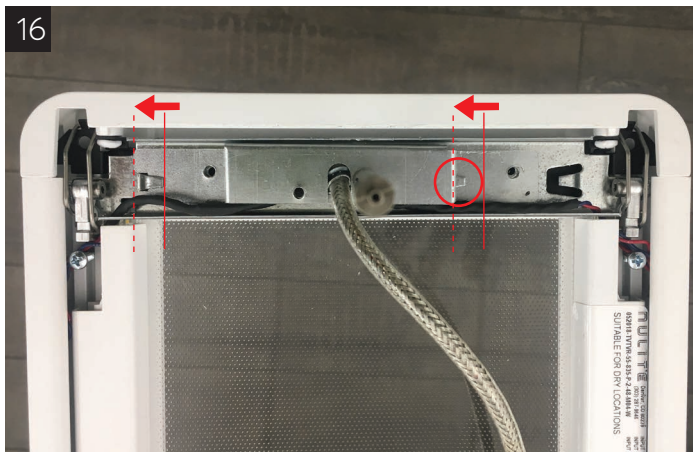
INSTALLING AN INDIVIDUAL OR ROWSTARTER LUMINAIRE



Make sure Stem assembly is aligned properly to tab features on luminaire



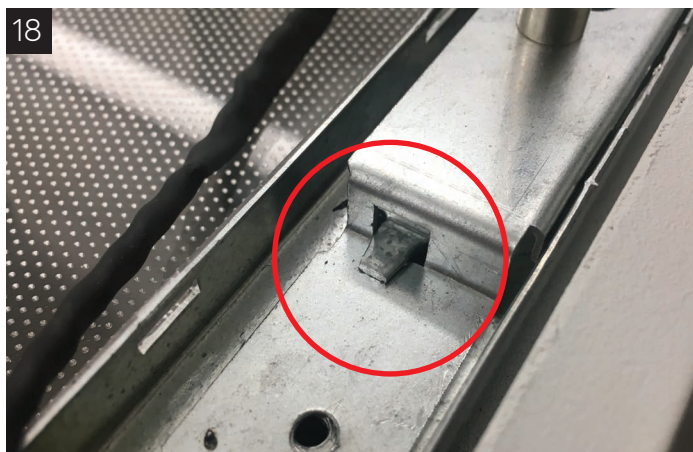
Drop stem assembly into place as shown, for power mounts make sure wires are managed as indicated on image.



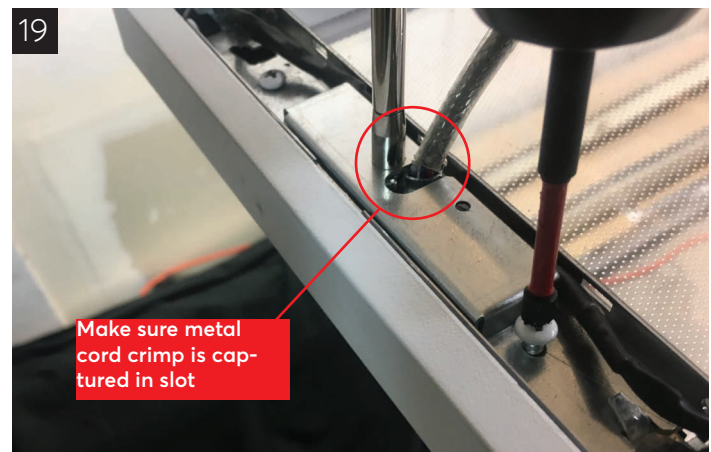
Push stem assembly laterally as shown until tabs engage



You may have to slightly bend tabs upward with a flat head screw driver to allow for full engagement



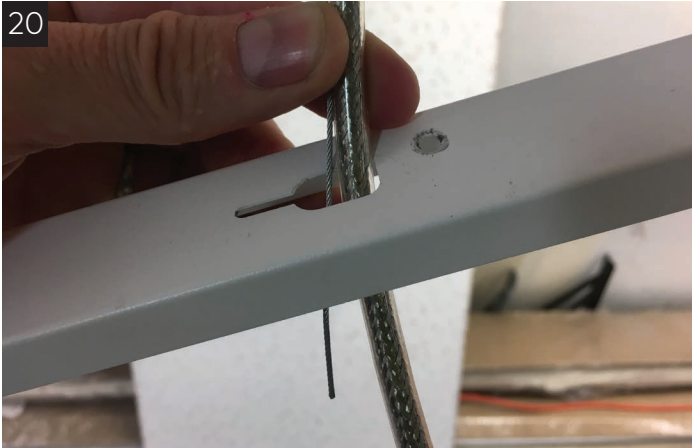
When tabs are properly engaged the tabs should appear as indicated in image



Make sure metal cord crimp is captured in slot

Attach stem assembly with two white screws, make sure wires are routed as shown, and metal cord crimp is captured in slot

INSTALLING AN INDIVIDUAL OR ROWSTARTER LUMINAIRE



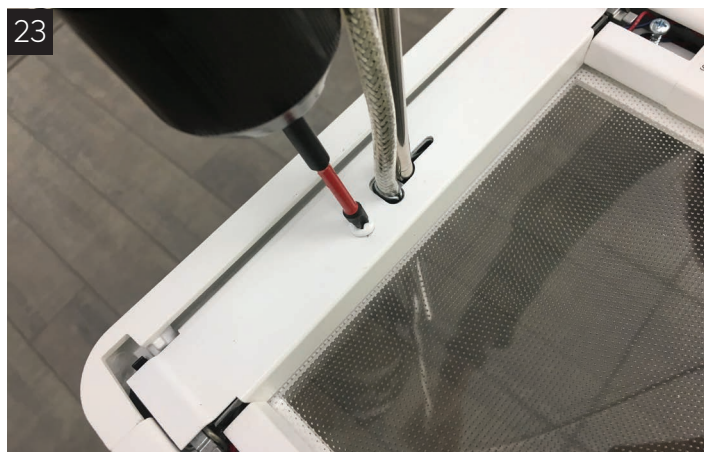
Thread aircraft cable through cover.



Install aircraft cable into the top of stem by simply pressing into stem plunger.



If necessary push cable through cable exit... level luminaire.. then trim excess.

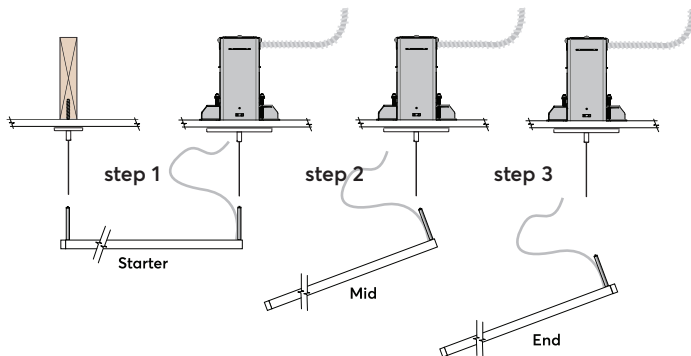


Final step, drop cover into place and attach white screw

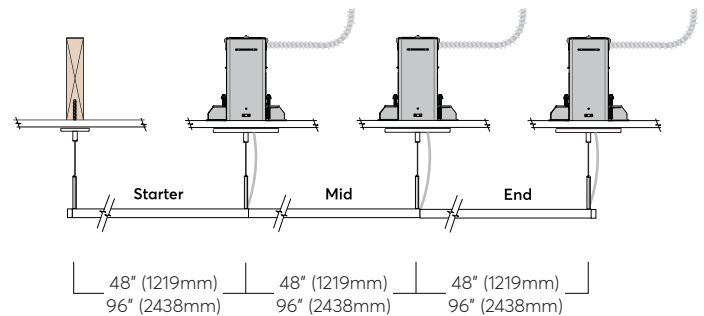
INSTALLING A

ROW-MID OR ROW-END

(AFTER STARTER HAS BEEN INSTALLED, STEP 2 OR STEP 3)



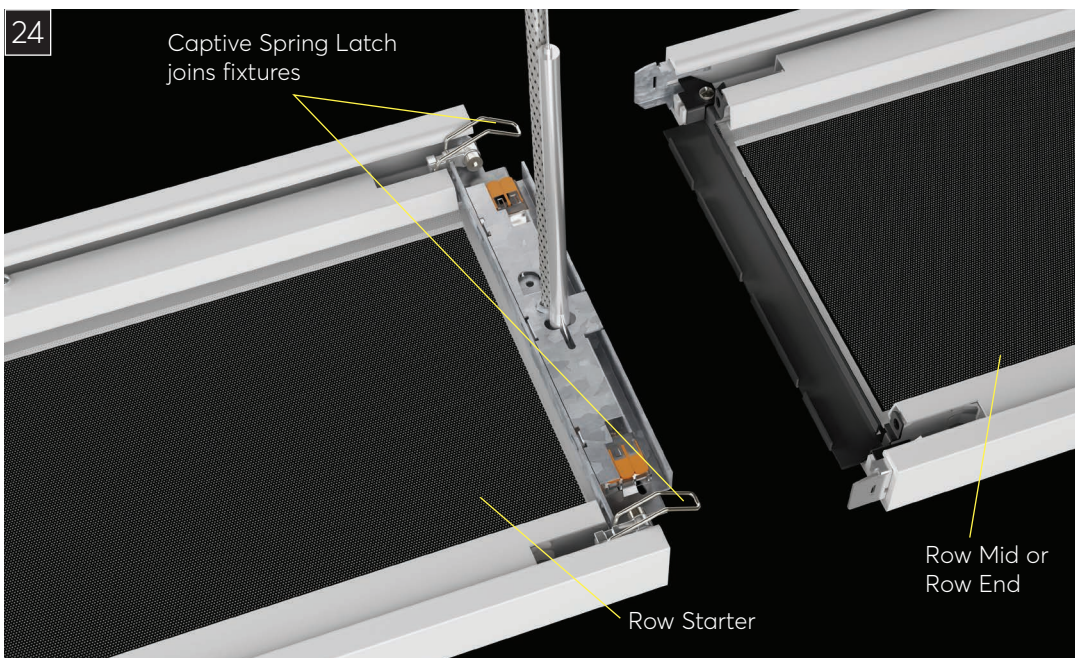
2 cable mounts in first fixture, only one cable mount in each subsequent fixture



Repeat Steps 1-11 and 13-23 to install next Grid driver enclosure in the row

24

Captive Spring Latch joins fixtures



After the "Row Mid" or "Row End" has been suspended at the far end, connect the luminaire to the "Row Starter" by sliding the luminaires together and then using the spring latch to securely make the final connection.