

Sottile 2D LED (1x1)

L1D Series

Type:	Project:	Qty:
	Date:	
Catalog #:		

Description:

The Nulite Sottile [so-tee-lay] 2D LED Series is a new fully luminous architectural recessed luminaire. This cost effective, energy efficient LED luminaire series provides soft ambient illumination.

Specifications:

Construction: Die formed 20 gauge cold rolled steel housing and powder coated white paint after fabrication.

Reflector / Driver: Reflector / driver cover is finished with high reflectance white paint. Standard constant current electronic driver with 0-10V dimming input; dimming range from 100% down to 1%. Universal (UNV) voltage is from 120 - 277V, 50/60 Hz

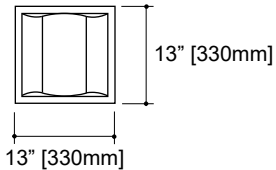
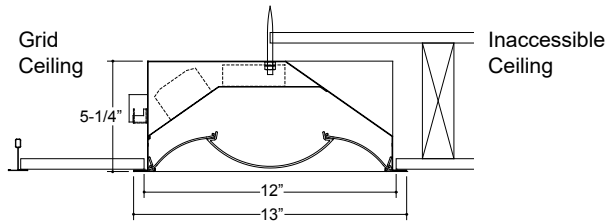
Shielding: Extruded 3-piece smooth frosted acrylic diffusers. Spring tension shift-and-remove center diffuser for convenient lamp maintenance. Optional smooth clear center with round perf overlay.

LED Module: Distributed LED array in a variety of lumen output packages. LED color is available in 3000K, 3500K or 4000K and in 80CRI or 90CRI. Module is replaceable. L90 ≥ 100,000 hrs.

Mounting: Acoustical grid or inaccessible ceiling, IC rated.

Labels: ETL listed, conforms to UL Standard 1598 and 8750. Dry location listed, optional Damp location is available.

Warranty: 5-year limited warranty on LED and Driver.



Ordering Information

Sample: L1D-1-20L35-UNV-DIM-DL

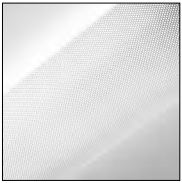
Series	Lumen Package ¹ / LED Color	Voltage	Driver	Options
L1D-1				
(Nom. 1x1)	10 (~1000 lms @ 10.75W) <small>80CRI</small> L30 20 (~2000 lms @ 21.5W) <small>L35</small> L35 L40 <small>90CRI</small> H30 H35 H40	UNV 120 277	DIM ² Dimming	RPO Round Perforated Overlay Center Diffuser EM ³ Remote Emergency Battery Pack DL Damp Location FLEX3 6' of Flex, 3-wire ("Class 2" low voltage control wires not sleeved in flex)

Notes:

1. Output based on standard optics. Output varies based on optical options.
2. 0-10V dimming standard. Consult factory for more information.
3. Specify voltage for this option.

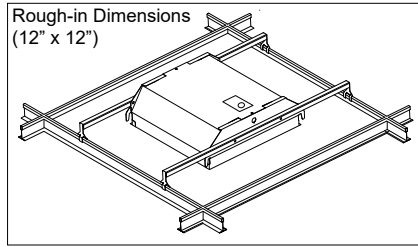


Center Diffuser Option



RPO

Grid Ceiling Mounting Detail



Standard mounting - (2) provided hanger brackets clip onto grid, 2' width, in the middle of the tile.