



nULITE

Regolo

Product Overview	3-4
LED Technology	6-10
Scale	12-14
Mounting Styles	16-18
Grid	19-20
Flange	21-22
Mud Ring	23-24
Trimless	25-26
Pendant	27-28
Surface	29-30
Wall	31-32
Perimeter	33-36
Lens Options	39-40
Corners / Intersections	41-42
Point Source Modules	43-44
Sensors	45
Asymmetric Reflector	46
Shallow In Wall	47
Wet Location	48
Ease of Installation	50-54





Our architectural linear lighting system is designed to satisfy the most discriminating of specifiers yet intelligently constructed to meet the budgets of most commercial projects. Welcome to Nulite's Regolo Family.

The Regolo family of products can be mounted in a variety of configurations such as recessed, surface and suspended. Our hybrid construction allows for a snap-in lens system for a crisp aesthetic across all four apertures.

Are you working on a project that requires custom run lengths? No worries. Our LED products can be customized to the nearest 1/8" in length.

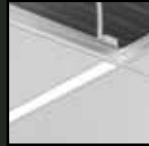
Illuminated LED corners allow for infinite amount of design possibilities. One is only limited by their imagination.

Nulite has provided the color palette, and the designers bring the brush to paint the lines of light.

Regolo... a complete linear lighting system proudly made in Denver, Colorado.

Recessed Options

Grid



Flange



Mud Ring



Trimless



Series (Aperture)

RG1 (1.5")*



RF1 (1.5")*



RM1 (1.5")*



RT1 (1.5")*



RG2 (2")



RF2 (2")



RM2 (2")



RT2 (2")



RG4 (3")



RF4 (3")



RM4 (3")



RT4 (3")



RG6 (5")



RF6 (5")



RM6 (5")



RT6 (5")



* Regolo One.5 is a new product for 2017. Consult factory for availability.

Distribution

Direct

Direct

Direct

Direct

Accessories²

Corners / Intersections
LED Point Source Module³
Occupancy Sensor
Daylight Sensor

Corners / Intersections
LED Point Source Module³
Occupancy Sensor
Daylight Sensor

Corners / Intersections
LED Point Source Module³
Occupancy Sensor
Daylight Sensor

Corners / Intersections
LED Point Source Module³
Occupancy Sensor
Daylight Sensor

Specifications are subject to change without notice. See our specification sheets at www.nulite-lighting.com for up-to-date information. 1) Nominal 1 inch units are only available in LED. 2) Not all accessories are available for each product.

Pendant



RP1 (1.5")*



RP2 (2")



RP4 (3")



RP6 (5")



Surface



RR1 (1.5")*



RR2 (2")



RR4 (3")



RR6 (5")



Wall



RW1 (1.5")*



RW2 (2")



RW4 (3")



RW6 (5")



Perimeter



RZ4



Direct
Bidirectional
Uplight³
Indirect⁴

Direct

Direct
Bidirectional
Uplight³
Indirect⁴

Narrow (Wall Grazer)
Wide (Highlight)

Corners / Intersections
LED Point Source Module³
Occupancy Sensor
Daylight Sensor

Corners / Intersections
LED Point Source Module³
Occupancy Sensor
Daylight Sensor

Occupancy Sensor
Daylight Sensor




Back Box

3) Only available in Regolo 4 and 6. 4) Only available in Regolo 4.

LED TECHNOLOGY



Color Temperature

3000K	3500K	4000K
		
CRI 83	CRI 84	CRI 85

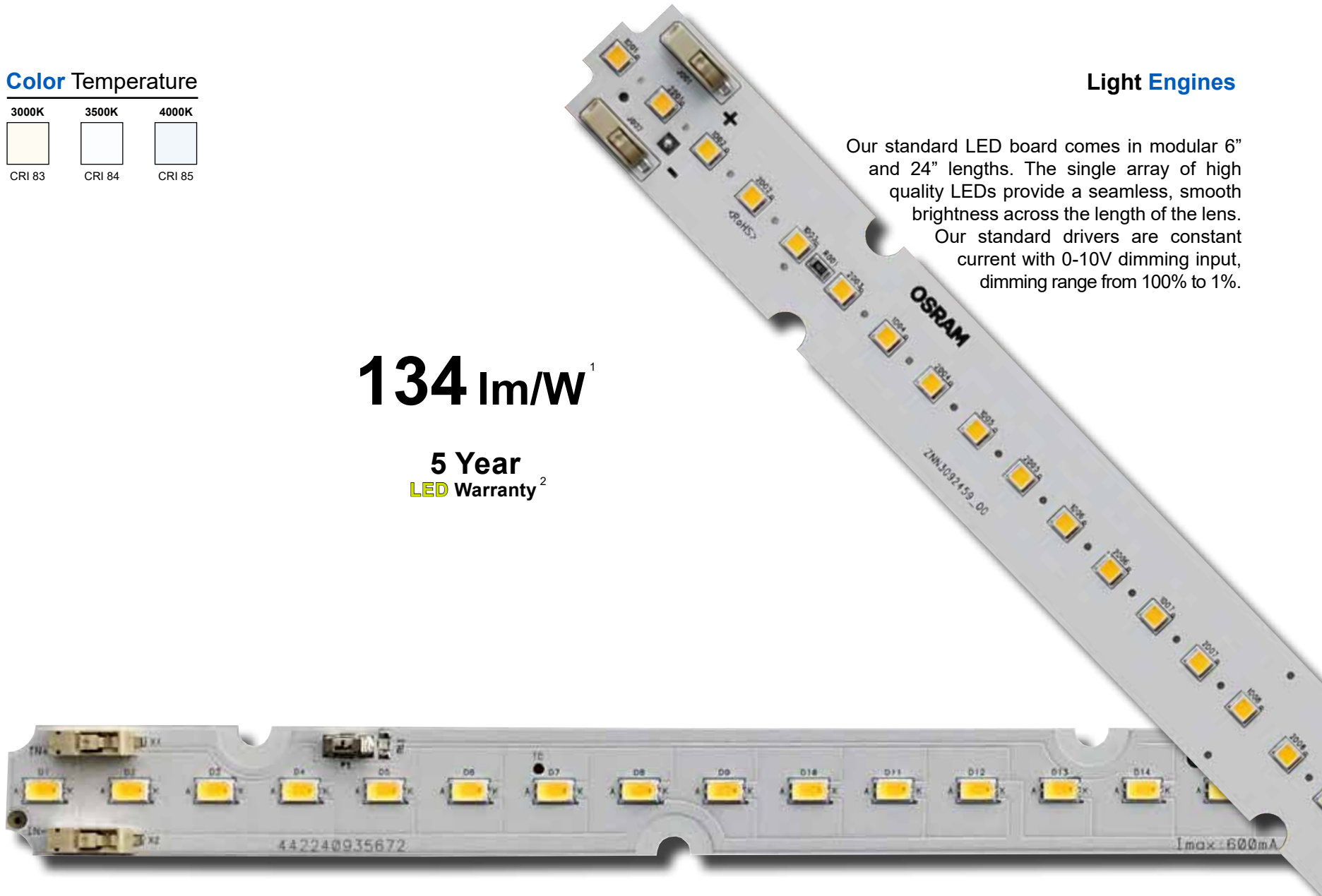
Light Engines

Our standard LED board comes in modular 6" and 24" lengths. The single array of high quality LEDs provide a seamless, smooth brightness across the length of the lens.

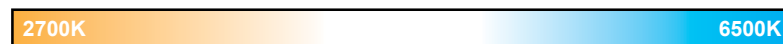
Our standard drivers are constant current with 0-10V dimming input, dimming range from 100% to 1%.

134 lm/W¹

5 Year
LED Warranty²



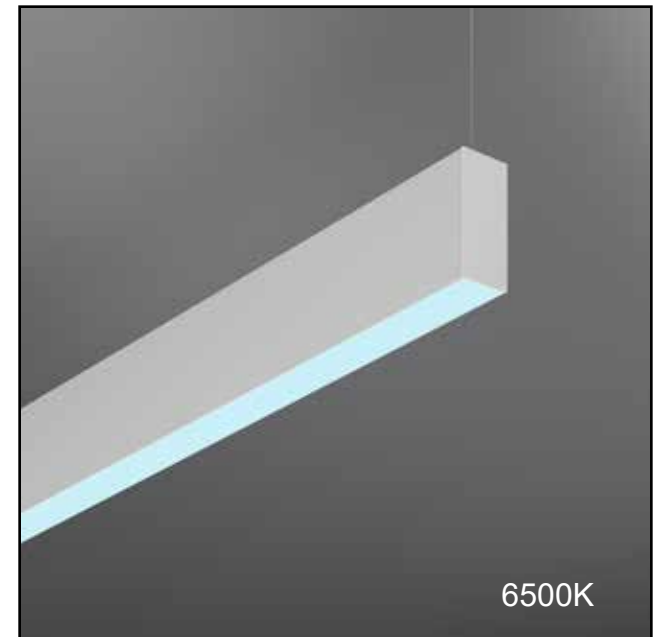
1. Regolo bidirectional pendant in 3500K, (RP4-4B-05L35...FRF...4').
2. See www.nulite-lighting.com or consult factory for warranty information.



Tunable White Technology



Color Temperature Range



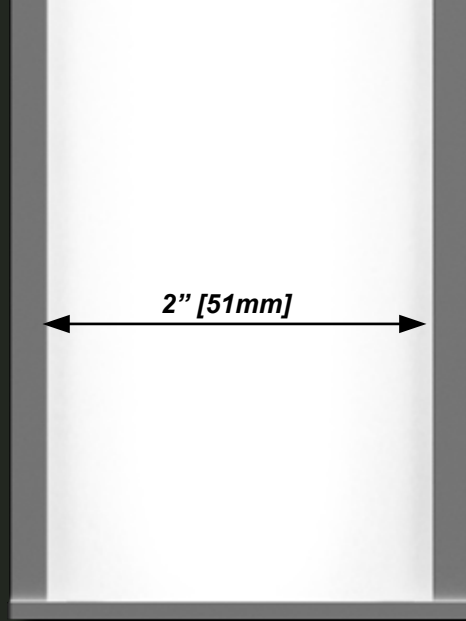
DALI

DMX

TUNABLE WHITE

Using Nulite's tunable white technology, you can adjust the color temperature in a space. Nulite will provide LED boards with alternating 2700K and 6500K color temperature chips along with dual channel drivers to communicate with customer supplied DALI or DMX controls. Our standard drivers provided smooth dimming to dark.

SCALE

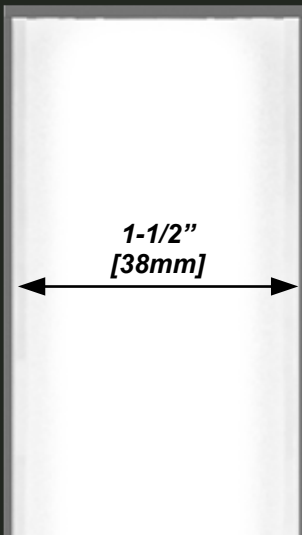


Regolo 2

Actual Size

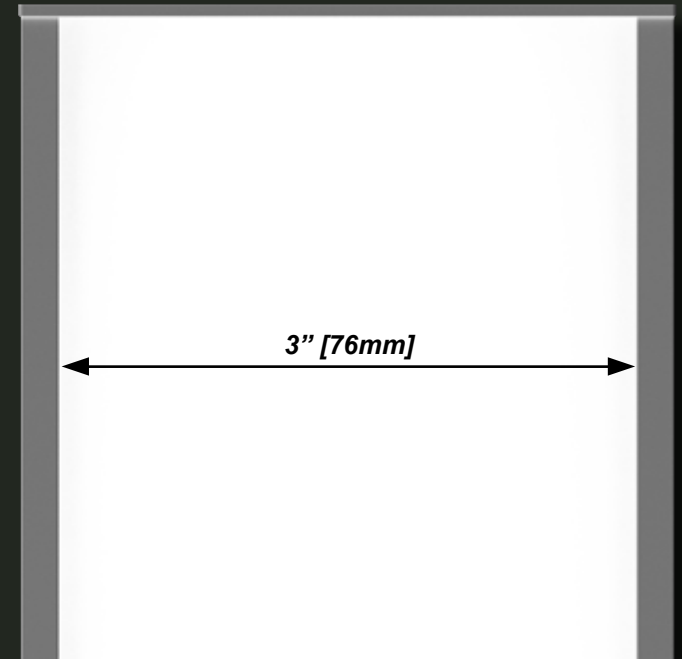
Regolo 1.5

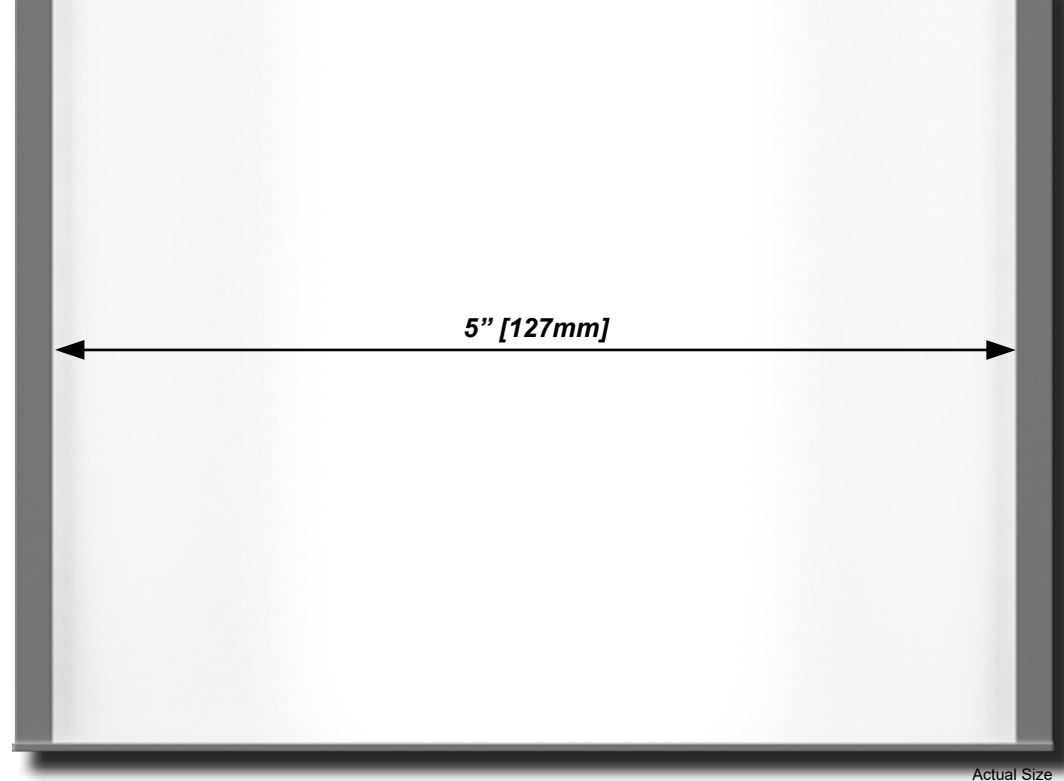
Actual Size



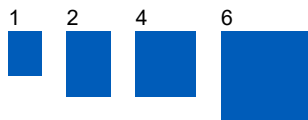
Regolo 4

Actual Size





Regolo 6



SCALE

Nulite designed a complete family of linear products to paint lines of light in any interior environment. Our palette ranges from nominal 1.5" to 5" apertures. All products have an extruded snap-in lens to achieve a crisp aesthetic and modern appearance.

MOUNTING STYLES





MOUNTING STYLES

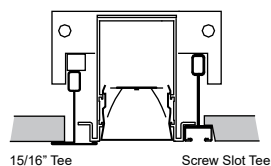
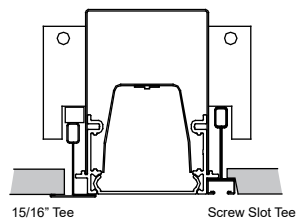
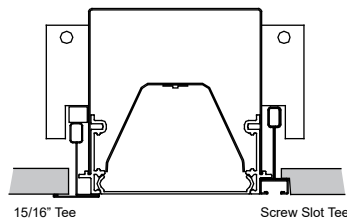
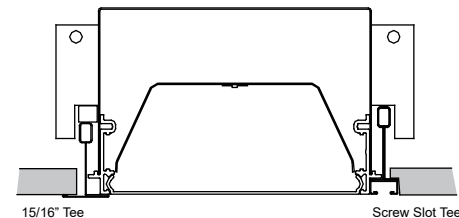
Regolo is available in three mounting styles: Recessed, Surface and Suspended.

For recessed applications, products are available in grid, flange, mud ring and trimless styles. The grid series is designed to work with all common ceiling grid systems which includes popular 4" and 6" on-center zone systems. Our overlapping flange is designed for inaccessible applications. For a smooth clean transition appearance, choose between our mud ring or trimless styles.

Other mounting styles include surface, wall and pendant. The surface mount style can be mounted to the ceiling, down the wall or even on top of an architectural feature. The wall and pendant mount are available in multiple distributions: direct, uplight, bidirectional and indirect for some products.

No matter the application, we have a solution with our Regolo family.

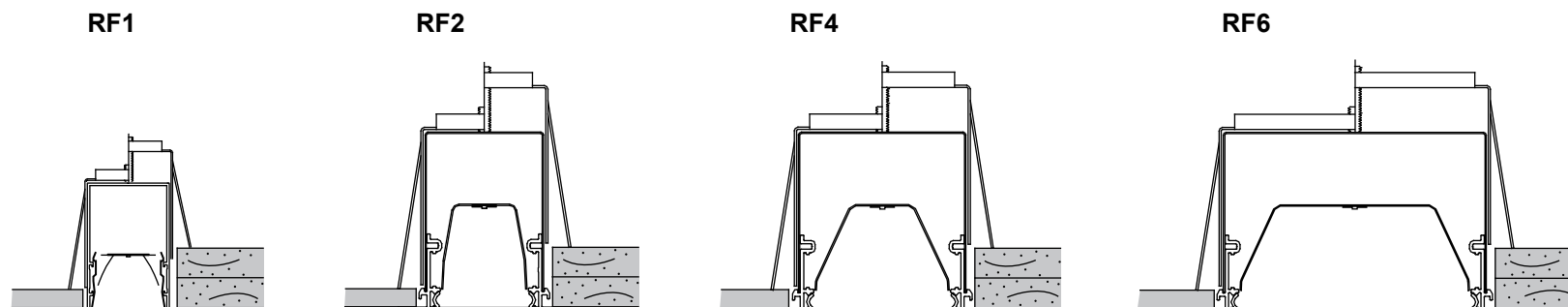


RG1**RG2****RG4****RG6**

GRID

The grid series is designed to work with all common ceiling grid systems which includes popular 4" and 6" on-center zone systems. There is no need to call out the "Tee" type. Our design is compatible with 15/16" (1"), 9/16" and screw or bolt slot grids. Grid hooks have a folding tab to set the height for screw slot and tegular tiles.





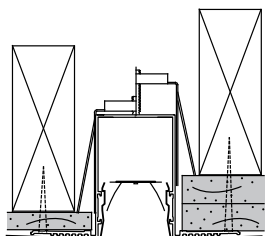
FLANGE

Our overlapping flange is designed for inaccessible applications. Flange trims are available in White, Silver, Bronze, Black and Custom colors. The adjustable support yokes make it easy to install in properly sized slots between 3/8" to 1-1/4" thick material. For each project, we send a field cutting jig(s) to ensure a correct fit.

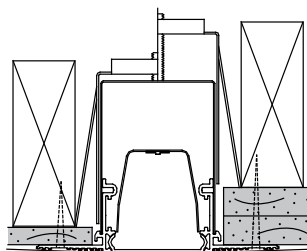




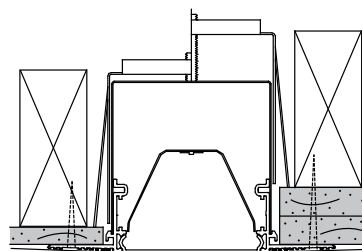
RM1



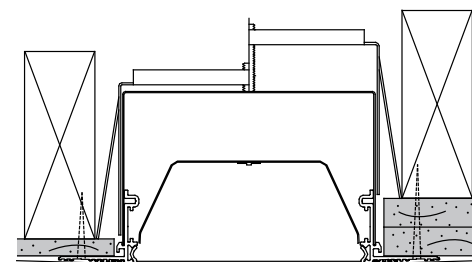
RM2



RM4



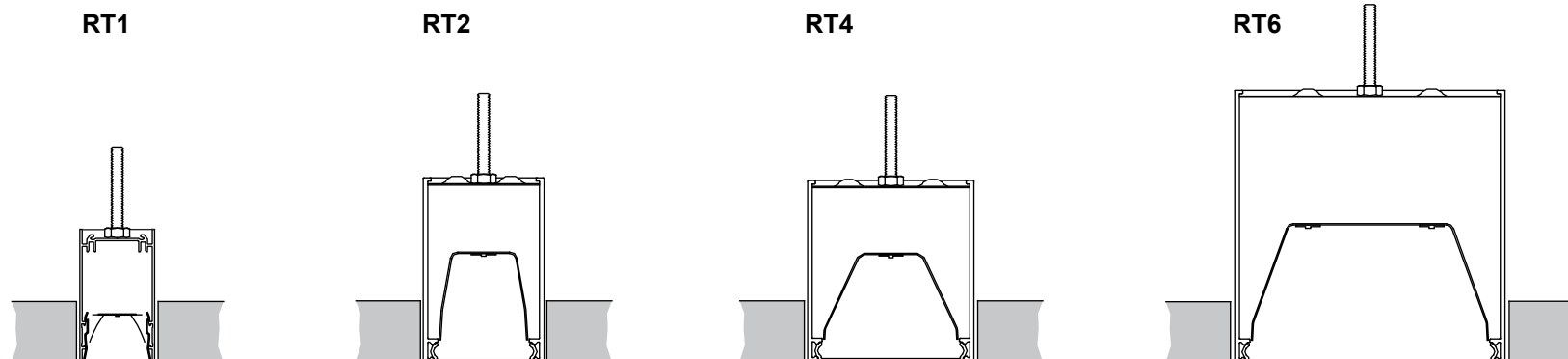
RM6



MUD RING

The mud ring is designed to be installed in inaccessible type applications and mud-in for a trimless appearance. Units feature extruded aluminum ribbed trim rails and heavy gauge steel end caps with perforated flanges to bond with plaster or joint compound. Trim rails have holes every 6" to be secured to structure by others. Units ship with protective black lenses to be replaced with the specified lenses after surface is finished.





Trimless

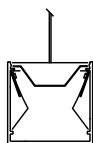
TRIMLESS

Our trimless is designed for applications not suited for flange or mud ring installations. This product is ideal for material thicker than 1-1/4" and must have precise straight edges for a clean appearance. Mounting requires 1/4-20 threaded rods and hardware by others.

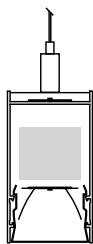




RP1



Remote 1.5

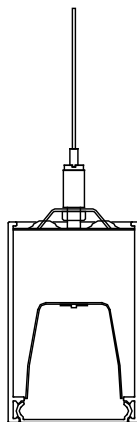


Integral 3.0

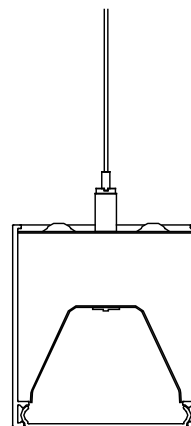


Integral 3.75

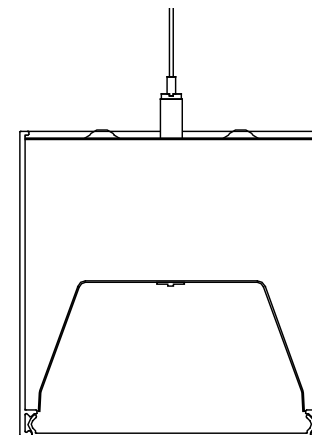
RP2



RP4



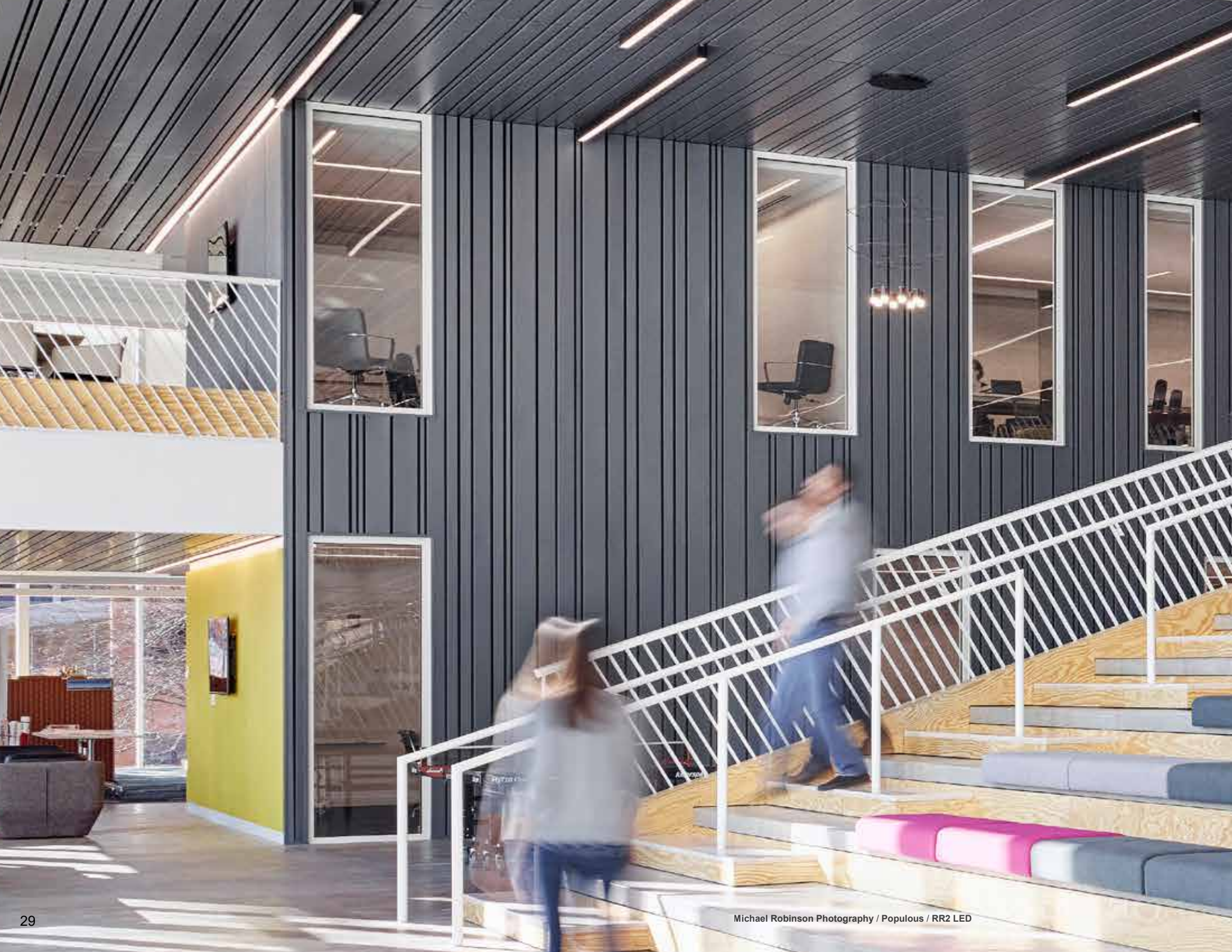
RP6

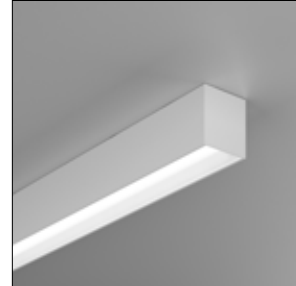


Pendant

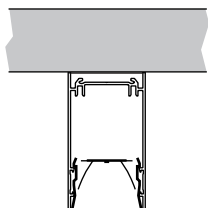
PENDANT

Pendants are available in multiple distributions: direct, bidirectional and indirect. Standard finish is textured White. Optional Silver, Black or Custom color is available upon request. Standard, adjustable aircraft cables come in two lengths, 48" or 120". Products can be mounted individually or in continuous rows.

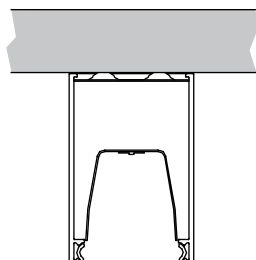




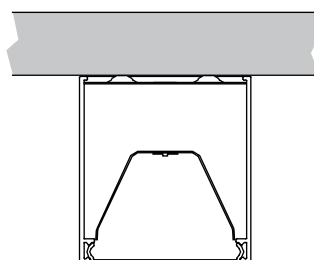
RT1



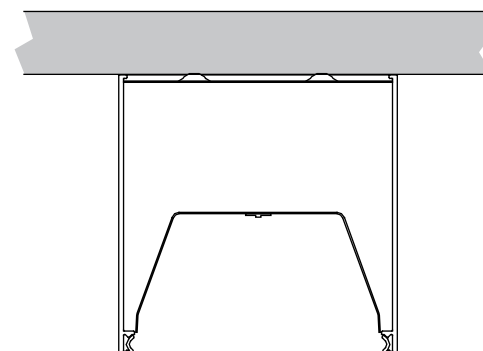
RT2



RT4



RT6



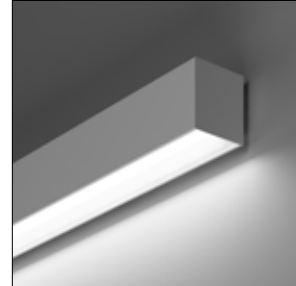
Surface

SURFACE

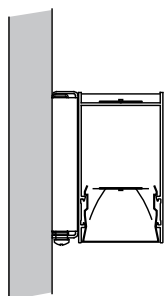
Surface can be mounted individually or in continuous rows. Standard finish is textured White. Optional Silver, Black or Custom color is available upon request.

The dimpled mounting holes allow for slight imperfections in the surface. Mounting structure and hardware to be provided by others.

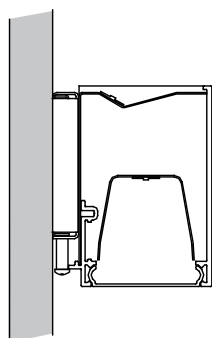




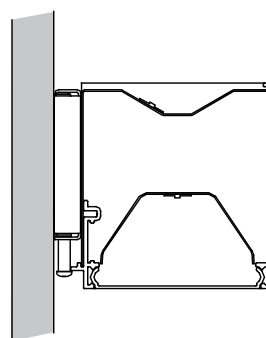
RW1



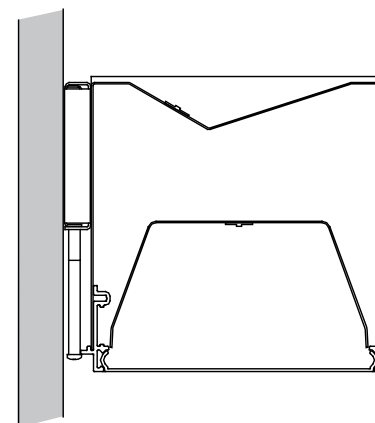
RW2



RW4



RW6



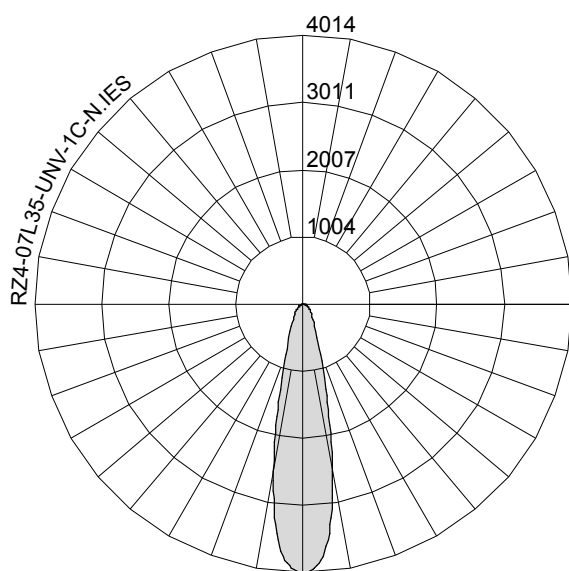
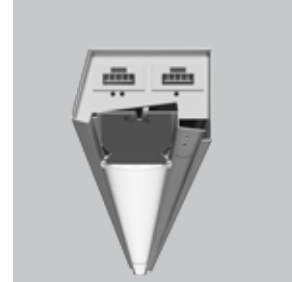
RW1 / RW2 / RW4

WALL

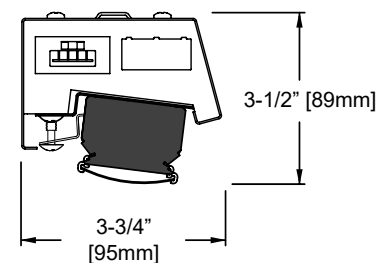
Wall mounted products adds strong visual interest to a space. Products are available in direct or bidirectional distributions. Our 1.5", 2" and 4" products meet ADA requirements. Standard finish is textured White. Optional Silver, Black or Custom color is available upon request.

Wall





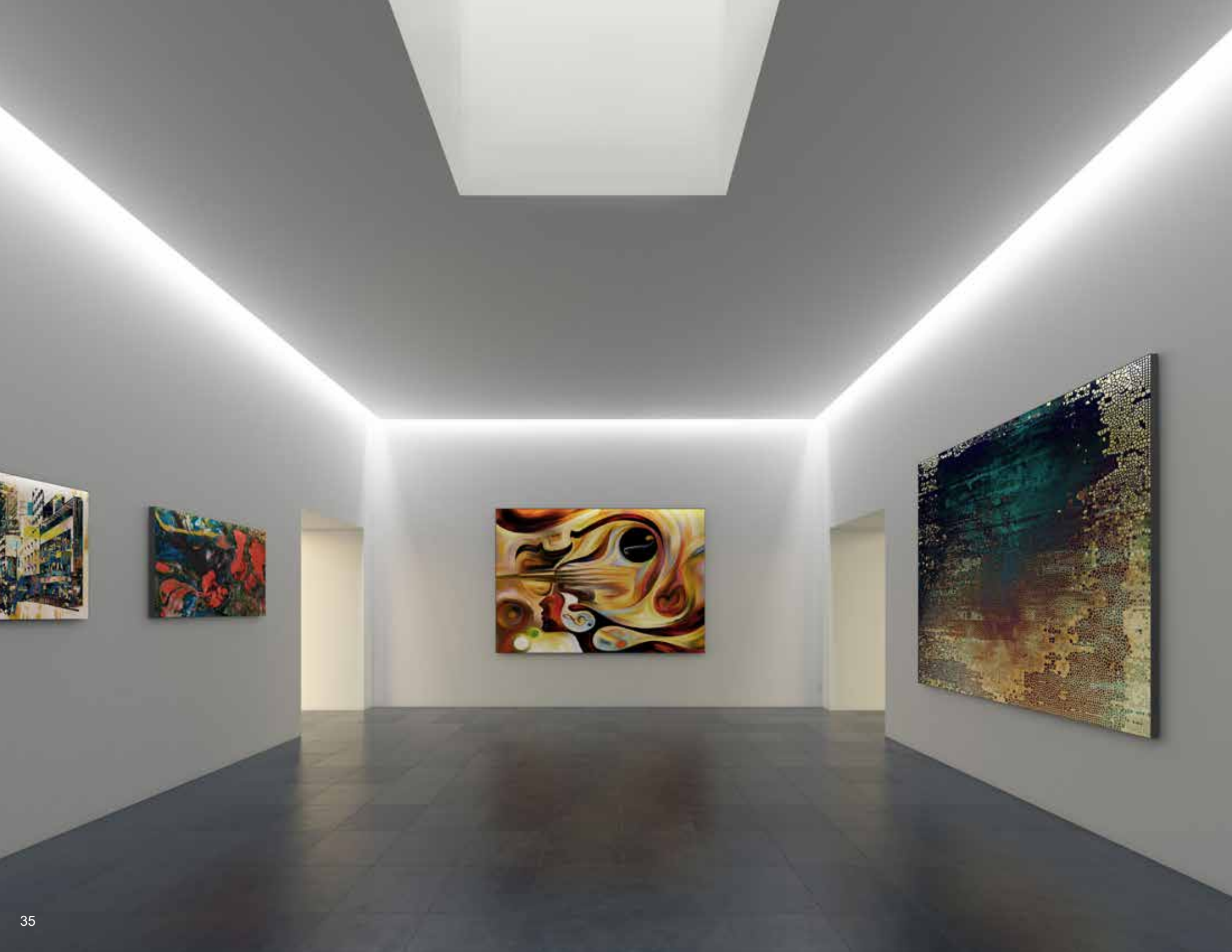
Light Module

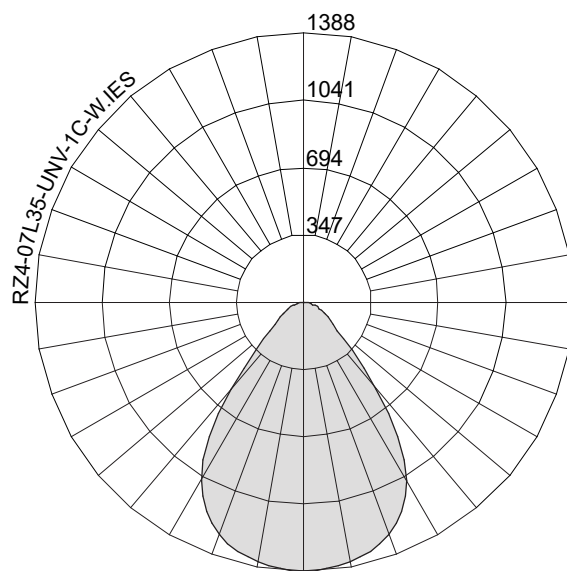
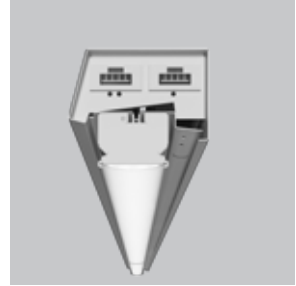


PERIMETER SYSTEM - NARROW DISTRIBUTION

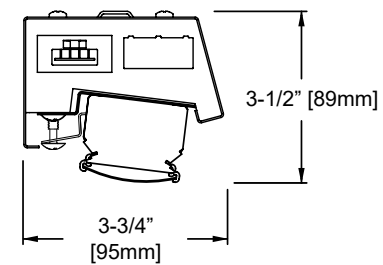
The Regolo Perimeter System provides a solution for illuminating vertical surfaces. The light module is designed for field constructed perimeter slots. If necessary, Nulite can provide back boxes compatible with Grid, Flange or Mud Ring type applications.

Our Stretto Optics™ utilize a refractive lens to redirect the light rays into a precise narrow distribution along with a secondary lens to soften the distribution and eliminate any color striations. Stretto Optics yields a 22° beam spread which is ideal for grazing textured vertical surfaces. Reveal the texture on your next project.





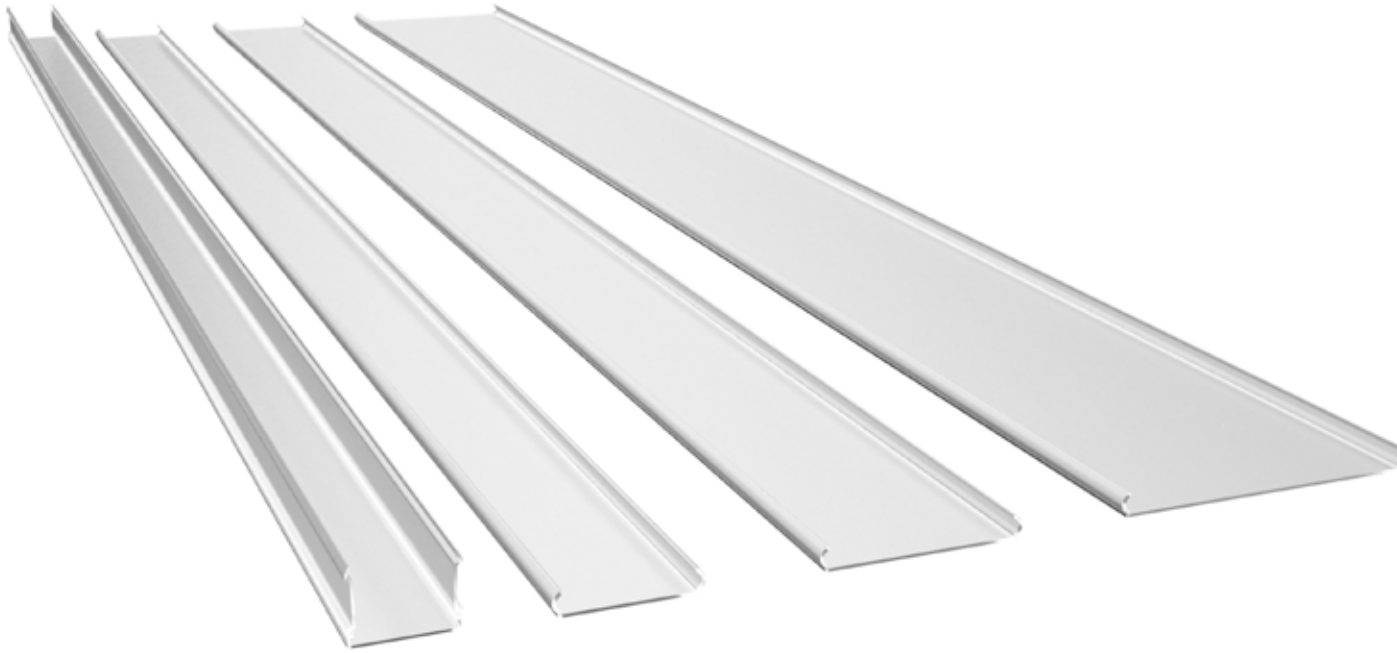
Light Module



PERIMETER SYSTEM - WIDE DISTRIBUTION

For a general perimeter highlight solution, use our wide distribution option. This creates a halo effect which adds visual separation between the ceiling and the walls. Illuminating vertical surfaces will add ambient illumination and increases the perceived size of the space.

OPTIONS and ACCESSORIES



LENSES

Our extruded snap-in lenses are designed by our optical engineering department. The proprietary lens mixtures manage diode concealment while balancing transmittance for maximum efficiency. We offer two acrylic material options, frosted and satin white.

For most products, we can offer three different lens positions. The lens can be regressed a half an inch to create a reveal between the luminous aperture and the surface material. Our standard option is a flush lens position. To add a side luminous glow, choose our drop lens for our nominal 2" and 4" products. All of these options are available in frosted or satin white.

FROSTED *verses* SATIN WHITE



Frosted Lens

This diffuser is designed for a balance between efficiency and lens uniformity. (Transmittance ~ 0.89)

Satin White Lens

This diffuser is designed for visible lens uniformity. It's recommended for regressed lens configuration in our shallow housing. (Transmittance ~ 0.69)



LENS POSITIONS

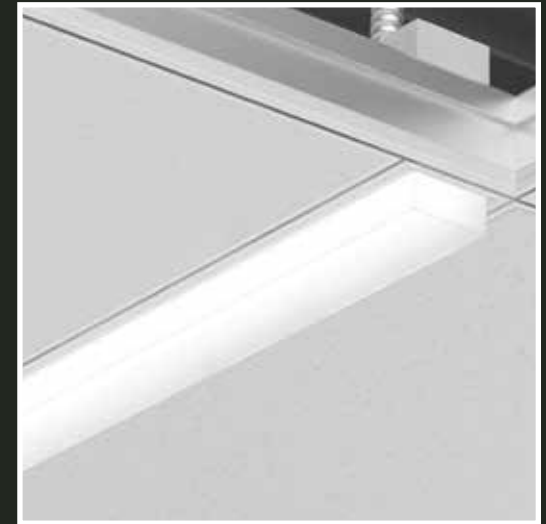


Regressed Lens

(Available for our recessed 2", 4" and 6" products)



Flush Lens



Drop Lens

(Available for our 1.5", 2" and 4" products)





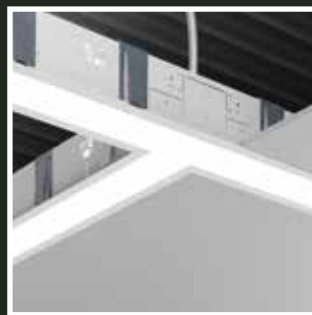
CORNERS and INTERSECTIONS

Illuminate with connected lines of light. Nulite offers LED lit corners for all the Regolo series of products. We can provide inside, outside, 90 degree corners, and intersections. As a designer, you are only limited by your imagination.

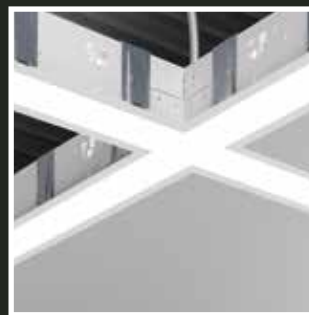
Standard CORNERS and INTERSECTIONS



CJL (90° Corner)



CJT ("T" Intersection)



CJX ("+" Intersection)



CJI (Inside "L" Corner)



CJO (Outside "L" Corner)





POINT SOURCE MODULE

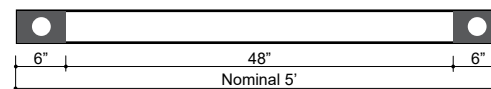
LED point source modules are designed to work with all 4" and 6" Regolo slot systems. Point Source modules are available in a 6" or 12" trim plate, fixed or adjustable aiming up to 40 degrees. Modules can be configured to your layout. See our accessory specifications.

Module Trim Plates (DTA or DTB)

	A	B
Regolo 4		
Regolo 6		
	6"	12"

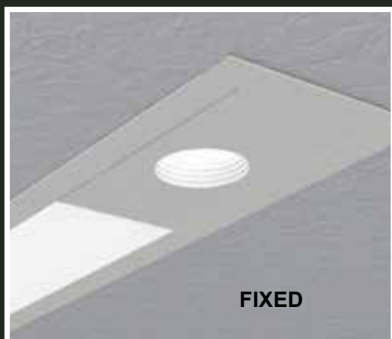
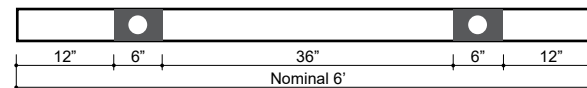
Example

Row Configuration (DTA-48-DTA)

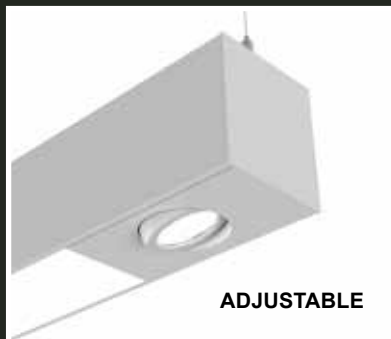


Example

Row Configuration (12-DTA-36-DTA-12)



FIXED



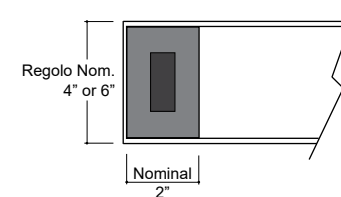
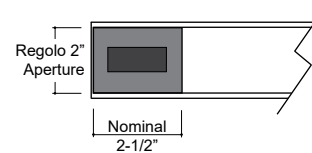
ADJUSTABLE



OCCUPANCY and/or DAYLIGHT SENSOR

Nulite offers Philips ActiLume integral passive infrared occupancy sensor and/or daylight sensor for energy saving applications. The sensor is located within a plate at the end of the luminaire. When occupancy is detected within the sensor's coverage area, the lighting will turn on automatically. The "off" time delay can be field adjusted. The sensor can control on/off or dimming through proper control gear. The sensor also features a daylighting function which it will keep lights off/dimmed with occupancy as long as there's sufficient daylight.

Sensor Plate



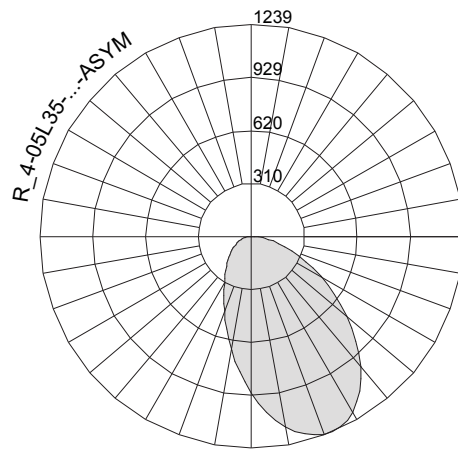
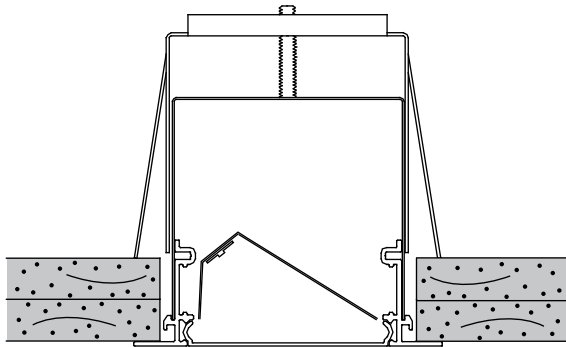
Enlighted ENABLED

Nulite has developed specialized components to house the Enlighted compact sensor and control unit. Consult factory for ordering information.



enlighted

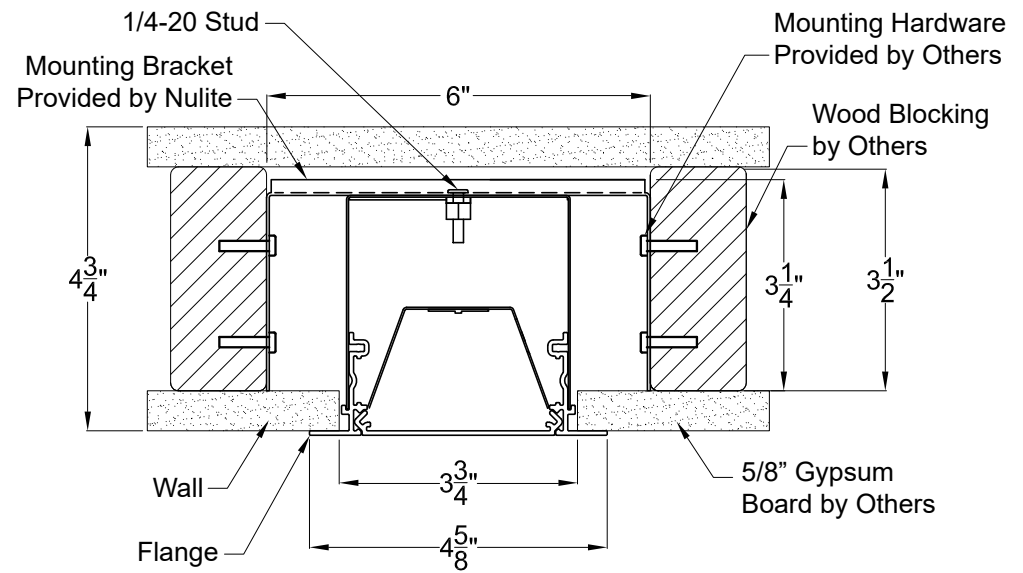
See www.enlightedinc.com for more information.



ASYMMETRIC DIRECT REFLECTOR

The direct component asymmetric reflector is available for our nominal 4" and 6" products with frosted flush lenses. Products with this reflector option maintain the same visual appearance while providing a wall wash distribution.





SHALLOW IN WALL MOUNT

The shallow in the wall option allows our flange products to be installed in a 3-1/2" cavity. Standard mounting yokes are replaced with "U" shaped brackets to be fastened to studs, by others.

WET LOCATION

Nulite is adding a wet location to the Regolo family. The wet option will be available in our nominal 4" wide Surface, Flange and Wall mount products. Products will utilize potted boards and drivers to keep moisture out of the electronic components. Consult factory for more information.

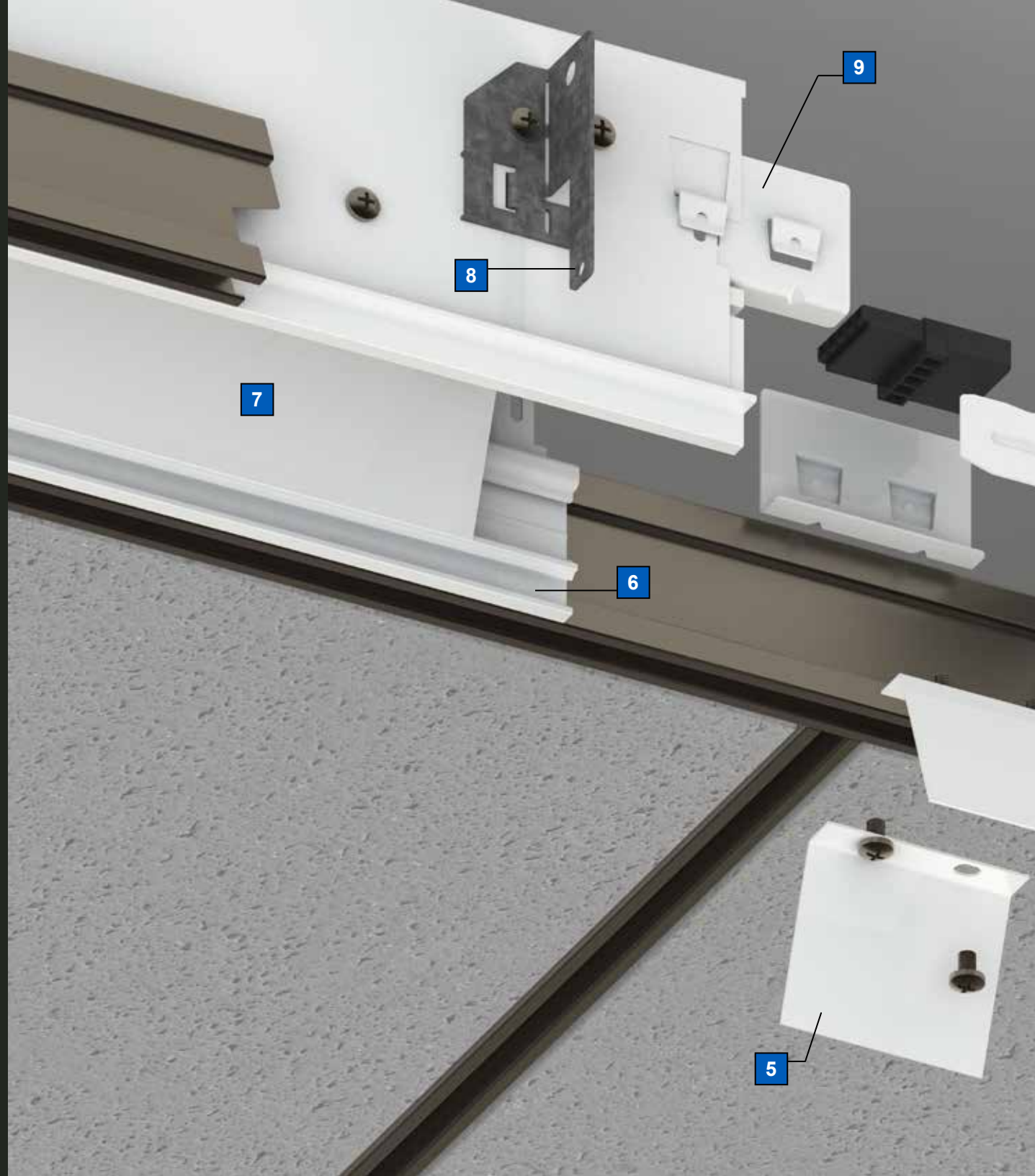


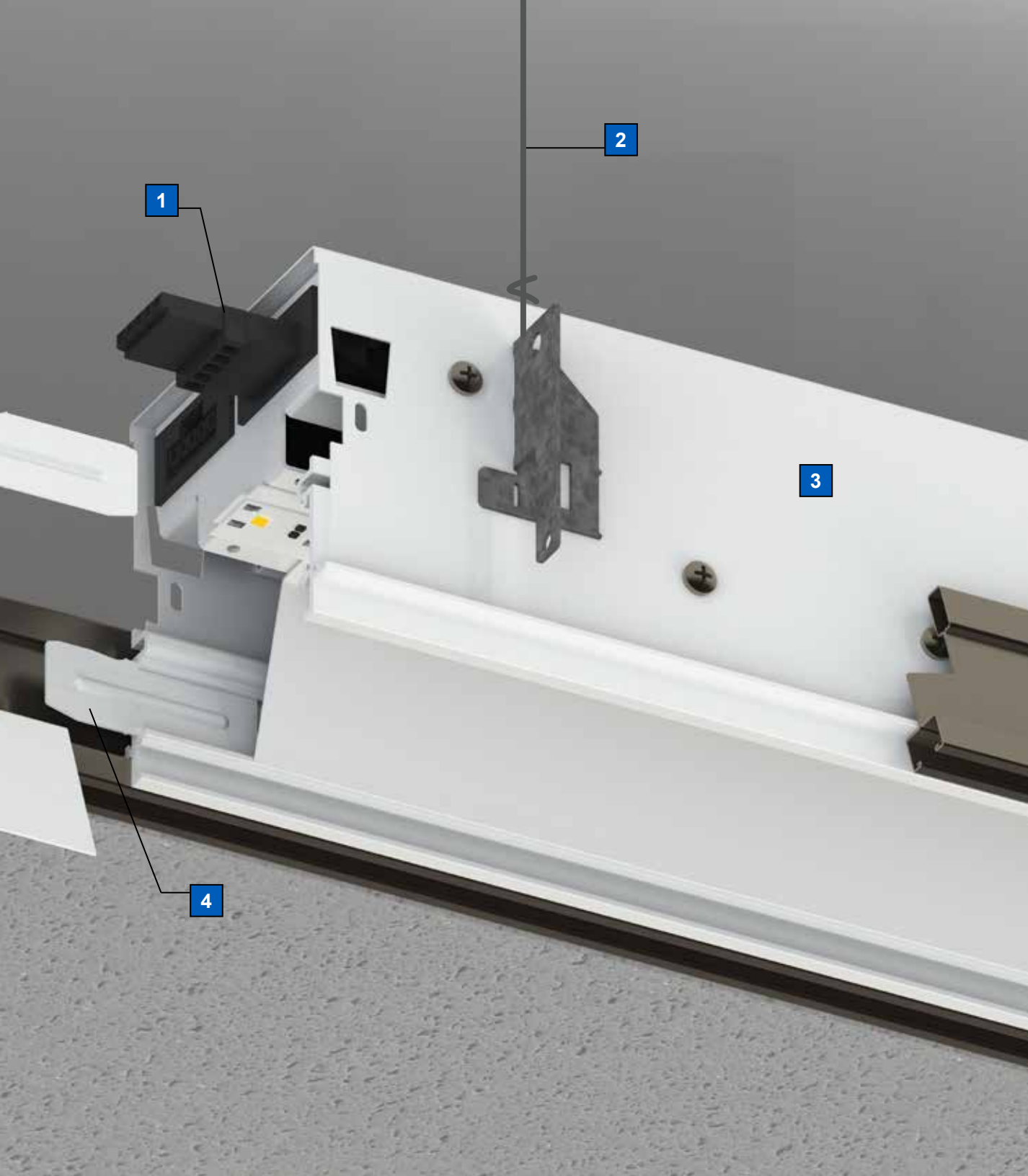
EASE OF INSTALLATION

Typical Recessed Joining System

Creating continuous lines of light requires a quality connection system.

Nullite engineered a system with labor savings in mind. All Regolo 2, 4 and 6 units come with factory wired plugs and electrical connector(s). This time saving features ensures proper electrical between units.





1 Time saving, intermediate power supply coupler(s)

2 Tie wire to structure by others

3 Formed cold rolled steel back housing finished textured white

4 (2) Formed steel alignment tabs

5 (2) Formed reflector covers finished in high reflectance white

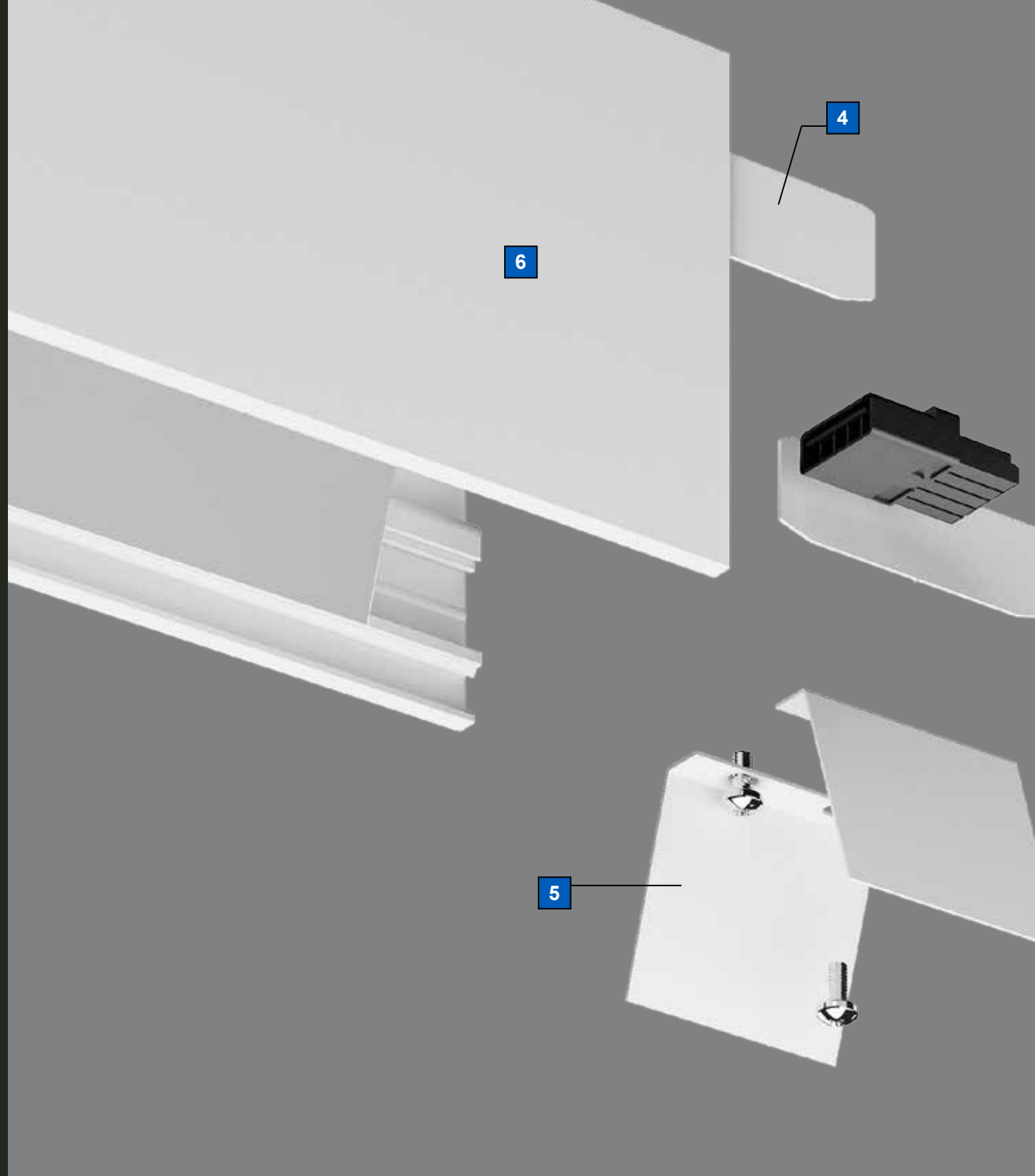
6 Visible extruded aluminum trim rails post painted textured white

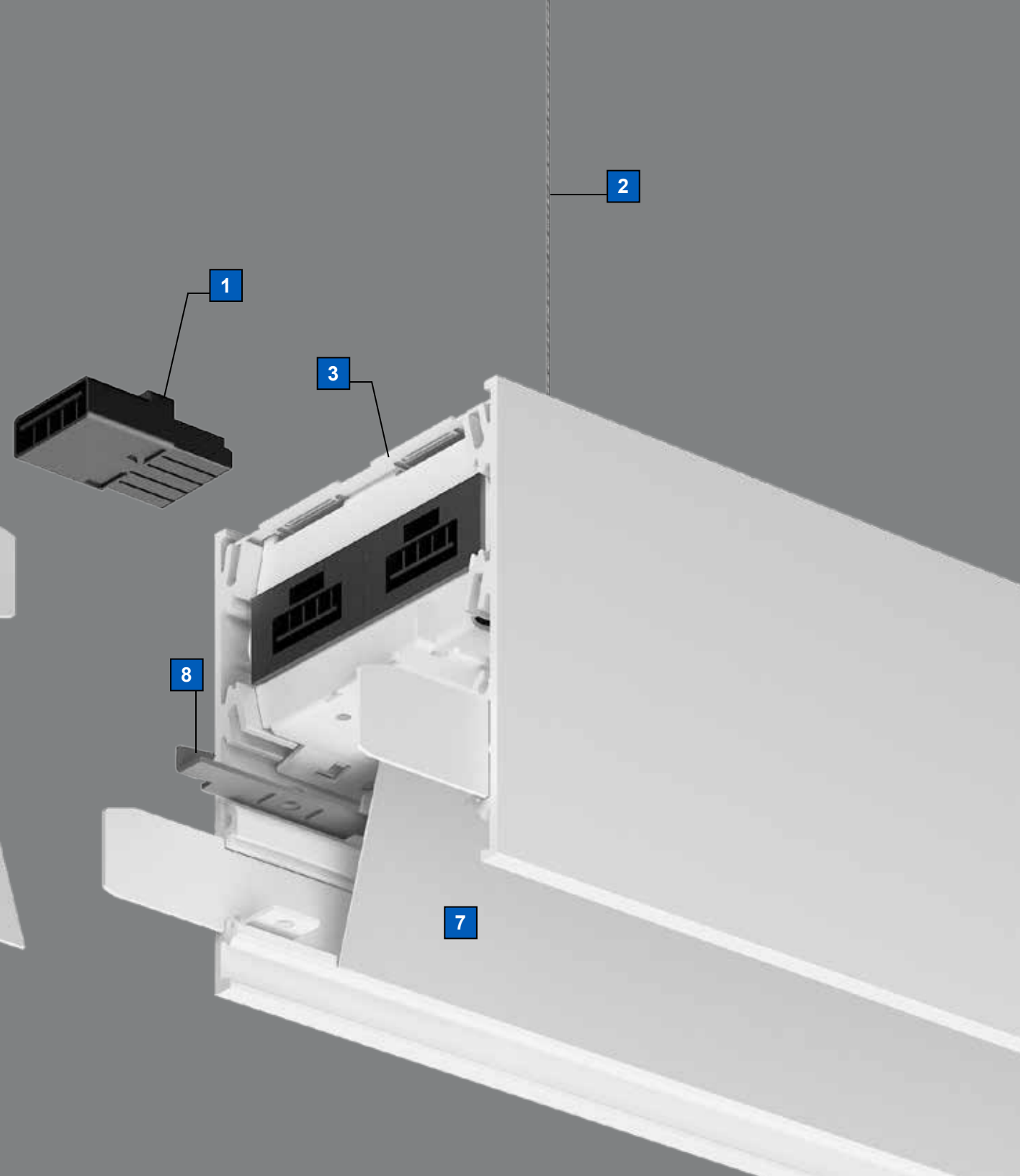
7 Formed cold rolled steel reflectors finished in high reflectance white

8 Galvanized grid hooks to support luminaire on tees, by others

9 (2) Die formed, snap-in joiner clips

Typical Pendant Joining System





1 Time saving, intermediate power supply coupler(s).

2 Suspension - Adjustable aircraft cable

3 Formed cold rolled steel back housing finished textured white

4 (4) Formed steel alignment tabs

5 (2) Formed reflector covers finished in high reflectance white

6 Visible extruded aluminum side rails post painted textured white

7 Formed cold rolled steel reflectors finished in high reflectance white

8 Galvanized joiner brackets and screws

Regolo

