

Type:	Project:	Qty:
	Date:	
Catalog #:		

Description:

The Regolo LED wall series is a narrow, nominal 4" wide, profile unit. The slender design is ideal for corridors, open and private offices, classrooms, lobbies and general purpose rooms.

Specifications:

Construction: The housing consists of visible extruded aluminum side rail with formed cold rolled steel back channel and heavy gauge end caps. Standard finish is powder coat textured white. Optional silver, black or custom color paint finishes.

Reflector / Driver: Reflector / driver cover is finished with high reflectance white paint. Optional asymmetric semi-specular aluminum reflector. Standard constant current electronic driver with 0-10V dimming input; dimming range from 100% down to 1%. Universal (UNV) voltage is from 120 - 277V, 50/60 Hz.

Direct Shielding: Extruded frosted or satin white acrylic snap-in lens with DR. Consult factory for upright shielding.

LED Module: Distributed LED array in a variety of lumen output packages. LED color is available in 3000K, 3500K or 4000K and in 80CRI or 90CRI. Module is replaceable. L90 ≥ 100,000 hrs.

Mounting: Wall mount, individual mount or continuous runs.

Labels: ETL listed, conforms to UL Standard 1598 / 8750 and CSA Standard C22.2, Damp location.

Warranty: 5-year limited warranty on LED and Driver.

Ordering Information

Sample: RW4-4V-06L35-UNV-D-1C-BK-20'

Series	Height / Distrib.		Lumen Package ⁴ / Color		Voltage	Driver	Circuit	Shielding	Color	Length	Options			
RW4														
RW4 (Wall - Nom. 4")	4	D Direct	03 (~391 lm/ft, 3.50W/ft)	80CRI	UNV	Dimming (0-10V)	1C Single Circuit	FRF (Frosted Flush)	WH (White - Standard)	2'	ASYM ⁹ Asymmetric Reflector Direct			
		B ¹ Bidirectional	05 (~570 lm/ft, 5.25W/ft)	L30		120	D ⁵ (Dim to 1%)					1E Single Circuit w/ EM Circuit	FRD (Frosted Drop Opaque End)	3'
		U ² Uplight	06 (~726 lm/ft, 6.83W/ft)	L35		277	D0 ⁶ (Dim to 1%, fade to off)					1B10 Single Circuit w/ 10WBattery Pack (CEC Compliant)	FRL (Frosted Drop Luminous End)	4'
		V ³ Indirect	09 (~881 lm/ft, 8.43W/ft)	L40			D02 ⁶ (Dim to 0%)					1B15 Single Circuit w/ 15WBattery Pack (CEC Compliant)	STD (Satin White Flush)	5'
			10 (~1033 lm/ft, 10.1W/ft)	H30			See Page 2 for Ordering Codes					2B10 Dual Circuit w/ 10WBattery Pack (CEC Compliant)	STL (Satin White Drop Luminous End)	6'
				H35			DALI Dimming					2B15 Dual Circuit w/ 15WBattery Pack (CEC Compliant)	Blank - Indirect (Standard No Lens)	7'
				H40				8'						
			Consult Factory for Custom Lumen Package			eldoLED ECOdrive ELE (Dim to 1%)					Continuous Runs ⁸ XX' Specify run length in 1 foot increments. Consult factory for custom lengths.			
						eldoLED SOLOdrive ELS (Dim to 0%)								

Notes:

- Standard Watts per Foot: (03) 6.42W/ft, (05) 9.50W/ft, (06) 12.3W/ft, (09) 15.2W/ft, (10) 18W/ft. For Bidirectional with not the same output, specify lumen package down / lumen package up (ie. 05DN/09UP-L35).
- Only available in 1 foot increments.
- No lens is standard for Indirect distribution. Consult factory for lens option.
- Nominal lumen output per foot for frosted lens and 3500K.
- Standard driver, don't connect low-voltage wires for non-dimming applications. Consult factory for specifications and manufacturer.
- Consult factory for specifications and manufacturer.
- Bidirectional ONLY. Not all options are available for luminaires under 4 foot.
- 6" increments are common custom lengths. We can provide custom run length down to the nearest (+/- 1/8").
- Asymmetric reflector for Direct component with Frosted Flush lens. Not available in Uplight or Indirect.

Specifications and dimensions are subject to change without notification. Specification sheets on our website supersede all other versions. 2019 Rev. E1
Nulite reserves the right to bulk package any order.

Lens Options

Shielding



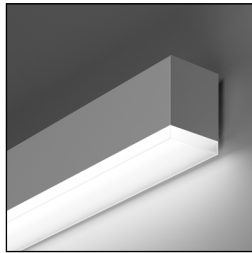
Frosted Lens

This diffuser is designed for a balance between efficiency and lens uniformity. (Transmission ~ 89%)

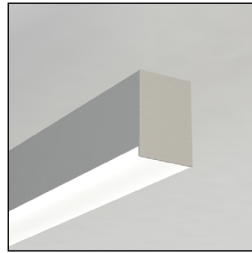
Satin White Lens

This diffuser is designed for visible lens uniformity. It's recommended for regressed lens configuration in our shallow housing. (Transmission ~ 69%)

Position



Drop Lens w/ Luminous End



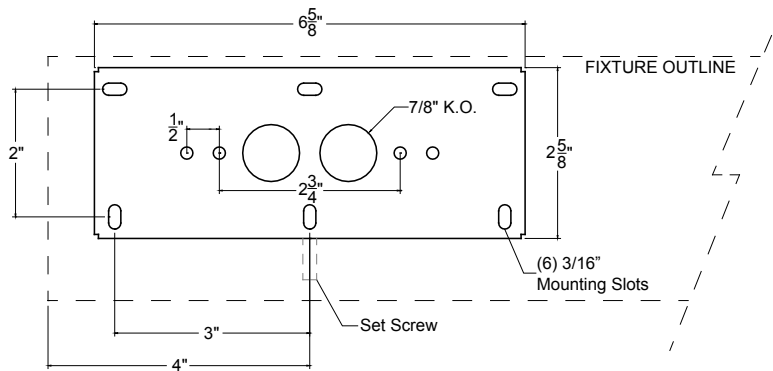
Drop Lens w/ Opaque End

Lutron Driver Ordering Codes

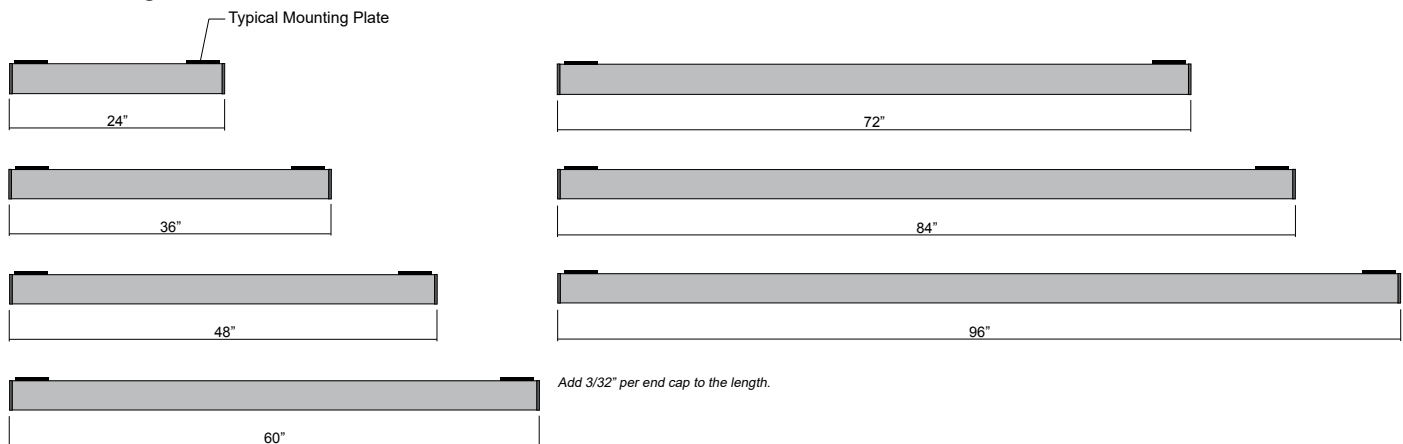
Nulite Code	Lutron Prefix	Lutron Series	Dim Level	Quantity of Wires	Dim to Dark (Smooth)
L11*	PEQ	Hi-Lume™ Premiere	0.1%	2	X
L12	LTEA	Hi-Lume™ 2-Wire 120V forward phase	1%	No Control Wires - Uses Hot	
L15	LDE1	Hi-Lume™ H-Series	1%	2	X
L16	LDE5	Hi-Lume™ 5-Series	5%	2	

*Maximum lumen package with L11 is 05

Wall Mounting Plate Detail



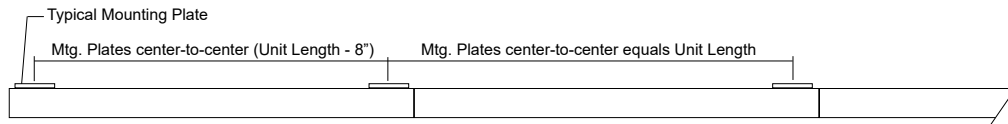
Individual Lengths



Continuous Run Lengths

		Run Length																																													
		2'	3'	4'	5'	6'	7'	8'	9'	10'	11'	12'	13'	14'	15'	16'	17'	18'	19'	20'	21'	22'	23'	24'	25'	26'	27'	28'	29'	30'	31'	32'	33'	34'	35'	36'	37'	38'	39'	40'	41'	42'	43'	44'			
Number of Housings	2'	1																																													
	3'		1																																												
	4'			1				1	1	1	1						1	1	1	1					1	1	1	1						1	1	1	1					1	1	1	1		
	5'				1			1					1					1				1				1				1				1				1					1				
	6'					1				1				1				1					1				1				1				1				1				1				
	7'						1				1				1				1					1				1				1				1				1				1			
	8'							1					1	1	1	1	2	1	1	1	2	2	2	2	3	2	2	2	3	3	3	3	4	3	3	3	4	4	4	4	5	4	4	4	4	5	

Add 3/32" per end cap to the length.



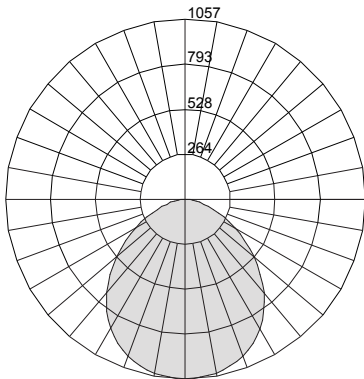
Photometric Curves

Cat. # RW4-4D-05L35-...-FRF-...-4'

Frosted Flush Lens

Wattage/ft - 5.25

Lumens/Watt - 109

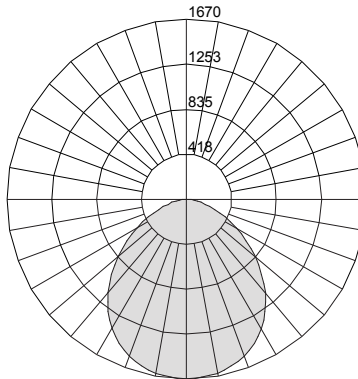


Cat. # RW4-4D-09L35-...-FRF-...-4'

Frosted Flush Lens

Wattage/ft - 8.43

Lumens/Watt - 105

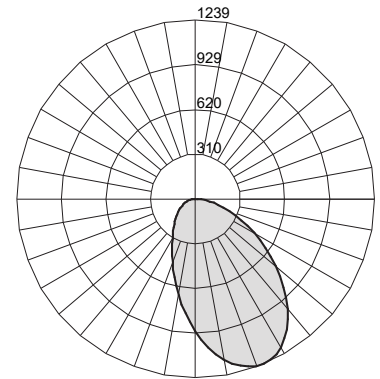


Cat. # RW4-4D-05L40-...-FRF-...-4'-ASYM

Frosted Flush Lens

Wattage - 5.25

Lumens/Watt - 110

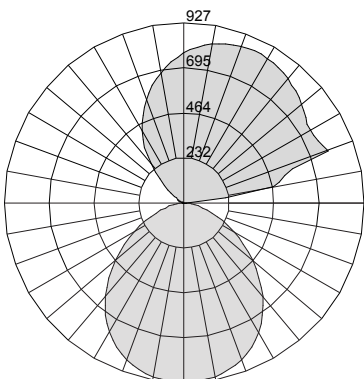


Cat. # RW4-4B-05L35-...-FRF-...-4'

Frosted Flush Lens

Wattage/ft - 9.50

Lumens/Watt - 120



Cat. # RW4-4B-05L35-...-FRF-...-4'-ASYM

Frosted Flush Lens

Wattage/ft - 9.50

Lumens/Watt - 119

