

Type:	Project:	Qty:
	Date:	
Catalog #:		

**Description:**

The Regolo RR6 series is a nominal 6" profile surface mount LED luminaire. The slender design is ideal for corridors, open and private offices, classrooms, lobbies and general purpose rooms.

**Specifications:**

**Construction:** The housing consists of visible extruded aluminum side rails with formed cold rolled steel back channel and heavy gauge end caps. Standard finish is powder coat textured white. Optional silver, black or custom color paint finishes.

**Reflector / Driver:** Reflector / driver cover is finished with high reflectance white paint. Optional asymmetric semi-specular aluminum reflector. Standard constant current electronic driver with 0-10V dimming input; dimming range from 100% down to 1%. Universal (UNV) voltage is from 120 - 277V, 50/60 Hz.

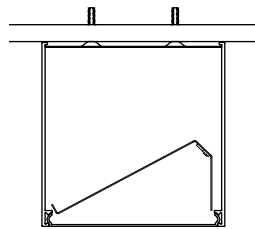
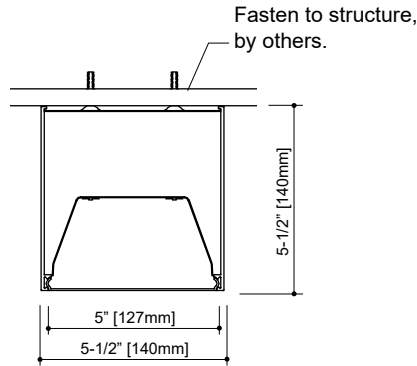
**Shielding:** Extruded frosted or satin white acrylic snap-in lens with DR.

**LED Module:** Distributed LED array in a variety of lumen output packages. LED color is available in 3000K, 3500K or 4000K and in 80CRI or 90CRI. Module is replaceable. L90 ≥ 100,000 hrs.

**Mounting:** Surface mounting, individual or continuous row.

**Labels:** ETL listed, conforms to UL Standard 1598 / 8750 and CSA Standard C22.2, Damp location.

**Warranty:** 5-year limited warranty on LED and Driver.



ASYM Option

**Ordering Information**

Sample: RR6-05L35-UNV-D-1C-FRF-WH-8'-ASYM

Series	Lumen Package <sup>1</sup> / Color	Voltage	Driver	Circuit	Shielding	Color	Length	Options	
RR6									
RR6 (Surface - Nom. 6")	05 (~571 lm/ft, 4.85W/ft)	UNV	<b>Dimming (0-10V)</b> D <sup>2</sup> (Dim to 1%) D0 <sup>3</sup> (Dim to 0%) <b>Lutron Dimming</b> See Page 2 for Ordering Codes <b>DALI Dimming</b> eldoLED ECOdrive ELE (Dim to 1%) eldoLED SOLOdrive ELS (Dim to 0%)	1C Single Circuit 1E Single Circuit w/ EM Circuit 1B Single Circuit w/ Battery Pack	FRF (Frosted Flush) STF (Satin White Flush)	WH (White - Standard) BK (Black) SV (Silver) CC (Custom Color)	2'	OS End of run Occupancy Sensor DS End of run Daylight Sensor ASYM <sup>5</sup> Asymmetric Reflector GLR Fusing See Accessories for Corners and Downlight Modules	
	06 (~728 lm/ft, 6.38W/ft)						120		3'
	09 (~882 lm/ft, 7.79W/ft)						277		4'
	10 (~1035 lm/ft, 9.39W/ft)	90CRI					5'		
	13 (~1269 lm/ft, 11.6W/ft)	H30					6'		
	17 (~1576 lm/ft, 14.6W/ft)	H35					7'		
	Consult Factory for Custom Lumen Package	H40					8'		
							<b>Continuous Runs<sup>4</sup></b> XX' Specify run length in 1 foot increments. Consult factory for custom lengths.		

**Notes:**

- Nominal lumen output per foot w/ frosted lens and 3500K.
- Standard driver, don't connect low-voltage wires for non-dimming applications. Consult factory for specifications and manufacturer.
- Consult factory for specifications and manufacturer.
- 6" increments are common custom lengths. We can provide custom run length down to the nearest (+/- 1/8").
- Only available with Frosted Flush lens.



Specifications and dimensions are subject to change without notification. Specification sheets on our website supersede all other versions. 2017 Rev. D3 Nulite reserves the right to bulk package any order.

Lens Options

Shielding



**Frosted Lens**  
This diffuser is designed for a balance between efficiency and lens uniformity. (Transmission ~ 89%)

**Satin White Lens**  
This diffuser is designed for visible lens uniformity. It's recommended for regressed lens configuration in our shallow housing. (Transmission ~ 69%)

Sensor Option

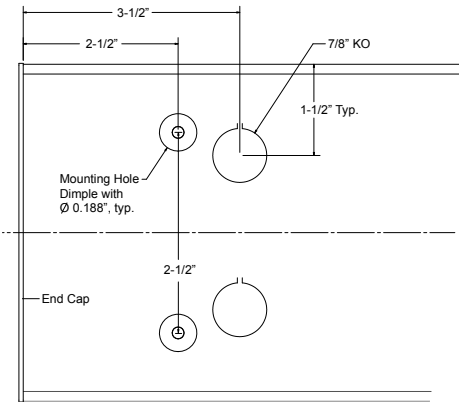


Lutron Driver Ordering Codes

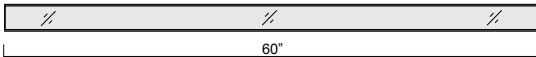
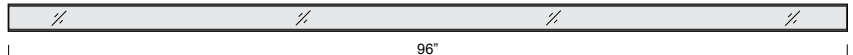
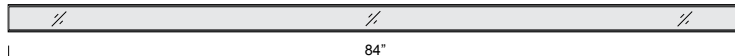
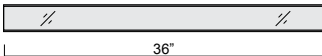
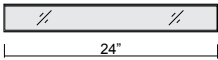
Nulite Code	Lutron Prefix	Lutron Series	Dim Level	Control Type	
				3-Wire	Eco-System™
L11	L3DAE	Hi-lume™	1%		Yes
L12	L3DA3W	Hi-lume™	1%	Yes	
L15	LDE1*	Hi-lume™ - H Series	1%		Yes
L16	LDE5	5-Series	5%		Yes

\* Soft-on, Fade-to-Black™

Back of Housing Mounting Holes & Power Feed KO



Individual Lengths



Add 3/32" per end cap to the length.

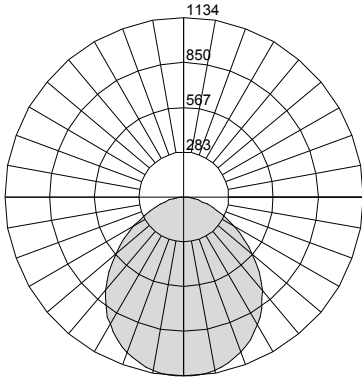
Continuous Run Lengths

		Run Length																																																	
		2'	3'	4'	5'	6'	7'	8'	9'	10'	11'	12'	13'	14'	15'	16'	17'	18'	19'	20'	21'	22'	23'	24'	25'	26'	27'	28'	29'	30'	31'	32'	33'	34'	35'	36'	37'	38'	39'	40'	41'	42'	43'	44'							
Number of Housings	2'	1																																																	
	3'		1																																																
	4'			1																																															
	5'				1																																														
	6'					1																																													
	7'						1																																												
	8'							1																																											

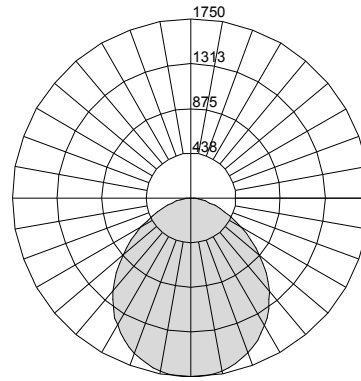
Specifications and dimensions are subject to change without notification.

Photometric Curves

Cat. # RR6-05L35-...-FRF-...-4'  
 Wattage/ft - 4.85  
 Lumens/Watt - 118



Cat. # RR6-09L35-...-FRF-...-4'  
 Wattage/ft - 7.79  
 Lumens/Watt - 113



Cat. # RR6-05L35-...-FRF-...-4'-ASYM  
 Wattage/ft - 5.25  
 Lumens/Watt - 109

