

Available in



**Regolo 6 Surface Series**

Type:	Project:	Qty:
	Date:	
Catalog #:		

**Description:**

The Nulite Regolo RR6 series is a nominal 6" profile surface mount luminaire. The product is ideal for illuminating corridors, open and private offices, classrooms, lobbies and general purpose rooms.

**Specifications:**

**Construction:** The housing consists of visible extruded aluminum side rails with formed cold rolled steel back channel and heavy gauge end caps. Standard finish is powder coat textured white. Optional silver, black or custom color paint finishes.

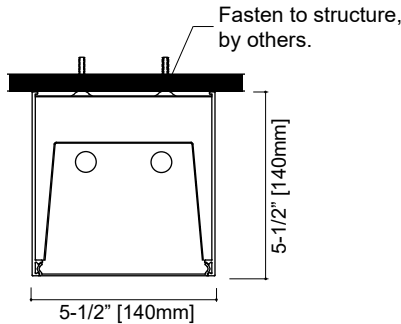
**Reflector / Ballast:** Reflector / ballast cover is finished with high reflectance white paint. Standard electronic, Class P, ballast. Universal (UNV) voltage ballast is from 120 - 277V.

**Shielding:** Extruded frosted acrylic or satin white acrylic snap-in lens with DR; semi-specular cross blade flush baffle.

**Lamping:** 1, 2 or 3 lamp cross-section T5, T5HO or T8. Luminaire can be ordered with lamps, consult factory.

**Mounting:** Surface mounting, individual or continuous row.

**Labels:** UL / cUL listed, Damp location.



**Ordering Information**

Sample: RR6-2T5HO-S-UNV-PSN-1C-STF-SV-24'

Series	Lamp	Staggered	Voltage	Ballast		Circuit	Shielding	Color	Length	Options
RR6										
RR6 (Surface - Nom. 6")	1T5	N (Non-staggered)	UNV	<b>T8 Options</b>	<b>Ballast Factor</b>	1C Single Circuit	FRF (Frosted Flush) STF (Satin White Flush) SBB (Flush Semi-spec Blade) Consult factory for upright shielding or dust cover.	WH (White - Standard) BK (Black) SV (Silver) CC (Custom Color)	2'	GLR Fusing FLEX3 6' of Flex, 3-wire FLEX4 6' of Flex, 4-wire OS Occupancy Sensor at end of run / unit DS Daylight Sensor at end of run / unit
	1T5HO		120	IS (Standard)	N Normal (Standard)	1E Single Circuit w/ EM Circuit			3'	
	1T8		277	PS	L Low	1B <sup>2</sup> Single Circuit w/ Battery Pack			4'	
	2T5		347 <sup>1</sup>	HEIS	H High	2C <sup>3</sup> Dual Circuit			5'	
	2T5HO			HEPS		2E <sup>3</sup> Dual Circuit w/ EM Circuit			6'	
	2T8			<b>T5 / T5HO</b>	<b>Ballast Factor</b>	2B <sup>2,3</sup> Dual Circuit w/ Battery Pack			7'	
	3T5			PS (Standard)	N Normal				8'	
	3T5HO			HEPS <sup>1</sup>					<b>Continuous Runs "XX"</b> Specify run length in 1' increment for non-staggered	
	3T8			<b>All Lamp Dimming Options</b>						
			DIM <sup>1</sup> Dimming SD <sup>1</sup> Step Dimming							
			IS=Instant Start PS=Program Start HEIS=High Efficiency Instant Start HEPS=High Efficiency Program Start							

**Notes:**

1. Consult factory for availability.
2. Specific voltage must be ordered for this option. Reduced profile battery packs only, consult factory for specifications. Not all electrical options are available.
3. Not all options are available for all lamp configurations.

**Shielding Options**



**Frosted Lens**

This diffuser is designed for a balance between efficiency and lens uniformity. (Transmission ~ 89%)

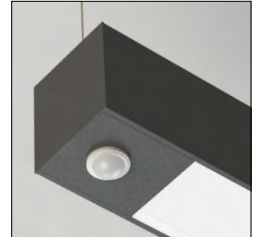
**Satin White Lens**

This diffuser is designed for visible lens uniformity. It's recommended for regressed lens configuration in our shallow housing. (Transmission ~ 69%)

**Semi-Specular Baffle**

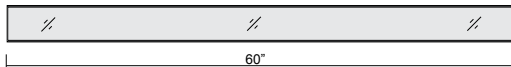
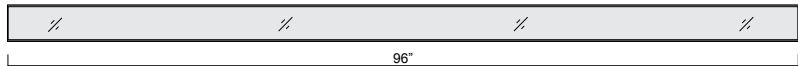
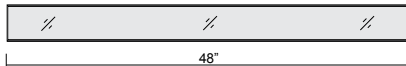
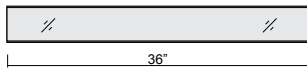
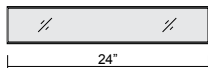


**Sensor Options**



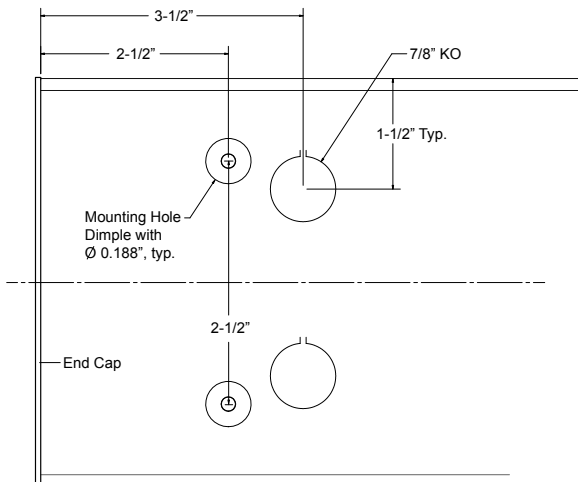
Occupancy or Daylight Sensor in a nominal 3" long insert plate. Lamps extend under the sensor plate and are removable without removing the sensor.

**Individual Lengths**



End cap thickness is 5/64"

**Back of Housing Mounting Holes & Power Feed KO**



Specifications and dimensions are subject to change without notification.

Continuous Non-Staggered Run Lengths

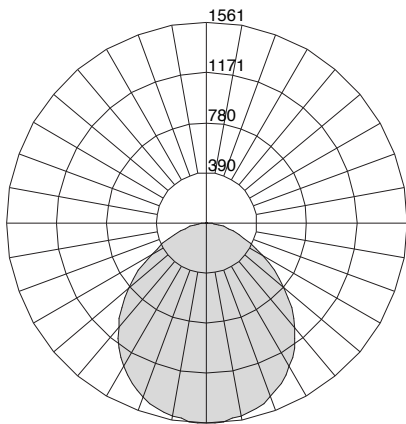
Non-Staggered Run Length (A = Stand Alone Housing, S = Starter Housing, M = Mid Housing, E = End Housing)

	2'	3'	4'	5'	6'	7'	8'	9'	10'	11'	12'	13'	14'	15'	16'	17'	18'	19'	20'	21'	22'	23'	24'	25'	26'	27'	28'	29'	30'	31'	32'	33'	34'	35'	36'	37'	38'	39'	40'	
24A	1																																							
36A		1																																						
48A			1																																					
60A				1																																				
72A					1																																			
84A						1																																		
96A							1																																	
72S								1	1							1	1																							
96S										1	1	1	1	1	1			1	1	1	1	1	1																	
96M																1	1	1	1	1	1	1	1	2	2	2	2	2	2	2	2	3	3	3	3	3	3	3	3	3
36E								1		1						1	1							1	1															
48E									1		1						1	1							1	1														
60E												1								1																				
72E													1								1																			
84E														1									1																	
96E															1																									

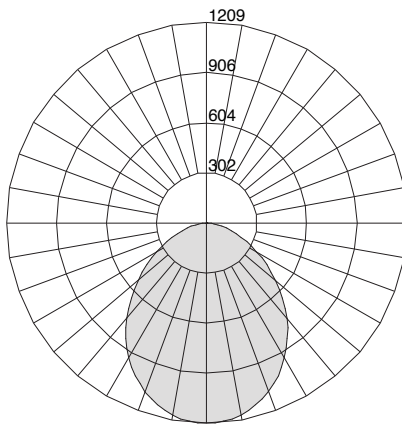
Shaded columns require all 4' lamps.

Photometric Curves

Cat. # RR6-2T5-N-...-FRF-...-4'  
Frosted Flush Lens  
Initial lamp lumens - 5200



Cat. # RR6-2T8-N-...-FRF-...-4'  
Frosted Flush Lens  
Initial lamp lumens - 5600



Cat. # RR6-2T8-N-...-SBB-...-4'  
Semi-specular Blade Baffle  
Initial lamp lumens - 5600

