



Type:	Project:	Qty:
	Date:	
Catalog #:		

Description:

The Regolo RR2 series is a narrow, nominal 2" wide, surface mount LED luminaire. The slender design is ideal for corridors, open and private offices, classrooms, lobbies and general purpose rooms.

Specifications:

Construction: The housing consists of visible extruded aluminum side rails with formed cold rolled steel back channel and heavy gauge end caps. Housing can be joined together for continuous row applications. Standard finish is powder coat textured white. Optional silver, black or custom color paint finishes.

Reflector / Driver: Reflector / driver cover is finished with high reflectance white paint. Standard constant current electronic driver with 0-10V dimming input; dimming range from 100% down to 10%. Universal (UNV) voltage is from 120 - 277V, 50/60 Hz.

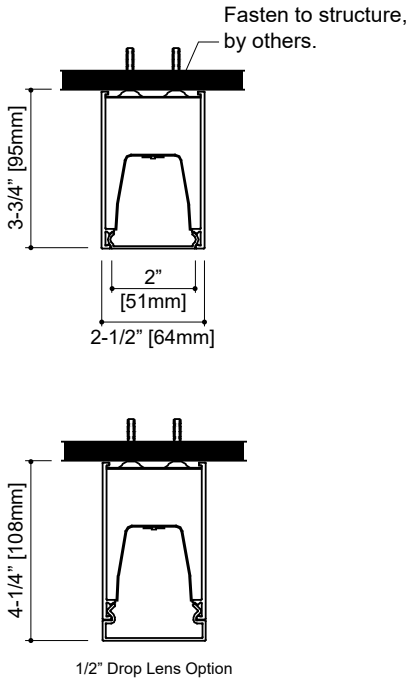
Shielding: Extruded frosted or satin white acrylic snap-in lens with DR.

LED Module: Distributed LED array in a variety of lumen output packages. LED color is available in (L30) 3000K, (L35) 3500K or (L40) 4000K. Module is replaceable. L90 ≥ 100,000 hours.

Mounting: Surface mount, individual or continuous row.

Labels: ETL listed, conforms to UL Standard 1598 / 8750 and CSA Standard C22.2, Damp location.

Warranty: 5-year limited warranty on LED and Driver.



Ordering Information

Sample: RR2-05L35-UNV-D-1C-FRF-WH-20'

Series	Lumen Package ¹ / Color	Voltage	Driver	Circuit	Shielding	Color	Length	Options	
RR2									
RR2 (Surface - Nom. 2')	03 (~393 lm/ft, 3.28W/ft)	L30	UNV	1C Single Circuit	FR (Frosted)	WH (White - Standard)	2'	OS ⁶ End of run Occupancy Sensor	
	05 (~573 lm/ft, 4.85W/ft)	L35	120				1E ⁴ Single Circuit w/ EM Circuit		ST (Satin White)
	06 (~732 lm/ft, 6.38W/ft)	L40	277	1B ⁴ Single Circuit w/ Battery Pack	D (Opaque Ends Drop lens)	SV (Silver)	4'	DS ⁶ End of run Daylight Sensor	
	09 (~886 lm/ft, 7.79W/ft)						L (Luminous Ends Drop lens)		CC (Custom Color)
	Consult Factory for Custom Lumen Package				Lutron Dimming			6'	GLR Fusing See Accessories for Corners
	See Page 2 for Ordering Codes				DALI Dimming			7'	
eldoLED ECOdrive				ELE (Dim to 1%)			8'		
eldoLED SOLOdrive				ELS (Dim to 0%)					
							Continuous Runs⁵		
							XX' Specify run length in 1 foot increments. Consult factory for custom lengths.		

Notes:

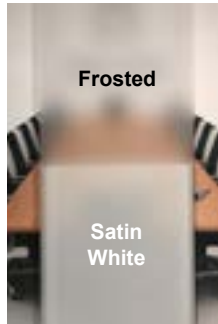
- Nominal lumen output per foot w/ frosted lens and 3500K.
- Standard driver, don't connect low-voltage wires for non-dimming applications. Consult factory for specifications and manufacturer.
- Consult factory for specifications and manufacturer.
- This circuiting option does NOT come with a plug-in wire connector between units. Contractor must field wire.
- 6" increments are common custom lengths. We can provide custom run length down to the nearest (+/- 1/8").
- Not available with Drop Lens.



Specifications and dimensions are subject to change without notification. Specification sheets on our website supersede all other versions. 2016 Rev. D Nulite reserves the right to bulk package any order.

Lens Options

Shielding



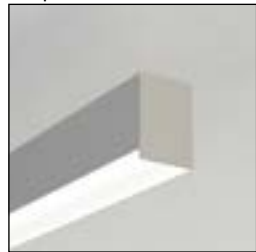
Frosted Lens

This diffuser is designed for a balance between efficiency and lens uniformity. (Transmission ~ 89%)

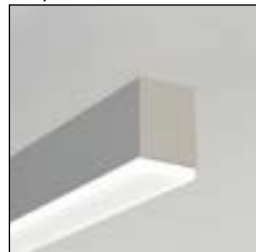
Satin White Lens

This diffuser is designed for visible lens uniformity. It's recommended for regressed lens configuration in our shallow housing. (Transmission ~ 69%)

“D” Opaque Metal End Drop Lens



“L” Luminous Acrylic End Drop Lens



Lutron Driver Ordering Codes

Nulite Code	Lutron Prefix	Lutron Series	Dim Level	Control Type	
				3-Wire	Eco-System™
L11	L3DAE	Hi-lume™	1%		Yes
L12	L3DA3W	Hi-lume™	1%	Yes	
L15	LDE1*	Hi-lume™ - H Series	1%		Yes
L16	LDE5	5-Series	5%		Yes

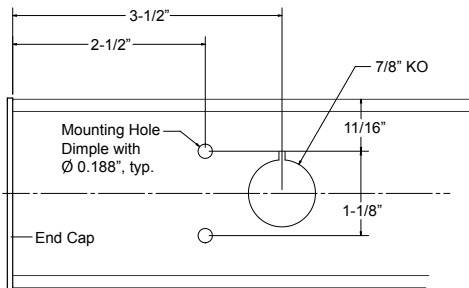
* Soft-on, Fade-to-Black™

Sensor Option



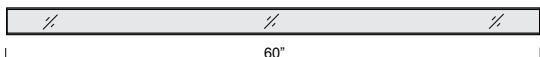
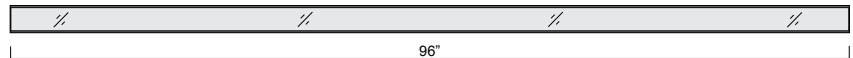
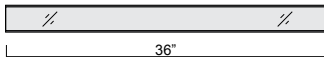
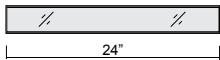
Occupancy and/or Daylight Sensor

Back of Housing Mounting Holes & Power Feed KO



Typical End of Housing Detail

Individual Lengths



Add 3/32" per end cap to the length.

Specifications and dimensions are subject to change without notification.

Continuous Run Lengths

		Run Length																																																					
		2'	3'	4'	5'	6'	7'	8'	9'	10'	11'	12'	13'	14'	15'	16'	17'	18'	19'	20'	21'	22'	23'	24'	25'	26'	27'	28'	29'	30'	31'	32'	33'	34'	35'	36'	37'	38'	39'	40'	41'	42'	43'	44'											
Number of Housings	2'	1																																																					
	3'		1																																																				
	4'			1					1	1	1	1					1	1	1	1						1	1	1	1						1	1	1	1							1	1	1	1							
	5'				1				1				1				1				1						1								1																				
	6'					1				1				1				1				1					1								1																				
	7'						1					1				1				1					1											1																			
	8'							1					1	1	1	1	1	2	1	1	1	1	2	2	2	2	3	2	2	2	2	3	3	3	3	3	4	3	3	3	3	4	4	4	4	4	4	4	4	5	4	4	4	4	5

Photometric Curves

Cat. # RR2-4D-05L35-....FRF-....4'

Frosted Flush Lens

Wattage/ft - 4.85

Lumens/Watt - 118

