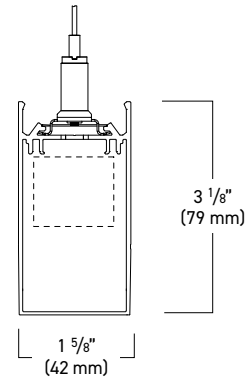


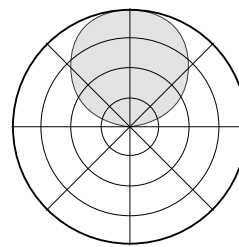
REGOLO 1  
**RP13**  
Indirect

## Pendant Integral Driver



- Micro-scale functional pendant luminaire that provides unlimited lighting possibilities for creative design.
- Precision cut extruded aluminum housing. Housing standard finish is electrostatically applied textured white powder coat paint. Optional silver, black, or custom color paint finishes.
- Long-life distributed LED array in a variety of lumen output packages. LED color is available in 3000K, 3500K or 4000K with a CRI of 80 or 90. Custom outputs are available. Module is replaceable. L90>100,000 hours. Tunable white utilizes 50% 2700K and 50% 6500K diodes with a CRI of 90.
- Acrylic lens system reduces internal components and utilizes a metal core PCBA that easily snaps into place. Removable for maintenance. Optimizes thermal management.

RP13-V  
100% Uplight



### Light Output and Energy Consumption\*

Light Level	lm/ft	Watts/ft	Efficacy
05	632.5	4.8	132.0
08	928.3	7.2	128.0
10	1181.0	9.6	123.0
13	1425.3	12.0	119.0

Lumen output may vary. 3500K / 80 CRI used for above results.

Multipliers for 80CRI: 3000K(.97) & 4000K(1.03)

Multipliers for 90CRI: 3000K(.81), 3500K(.84) & 4000K(.86)

**ORDERING INFORMATION\*** / Example: RP13-V-15-H40-U-D-11-BK-T9-B-120-8'

RP13-V						
SERIES	LUMEN PACKAGE <sup>1</sup>	CRI/ CCT	VOLTAGE	DRIVER		CIRCUITING <sup>5</sup> / EMERGENCY OPTIONS <sup>6</sup>
RP13-V - Regolo 1.625" Wide, 3.125" Tall Indirect Integral Pendant	05 - 500 lm/ft 08 - 750 lm/ft 10 - 1000 lm/ft 13 - 1250 lm/ft 15 - 1500 lm/ft XX <sup>2</sup>	L30 - 80 CRI, 3000K L35 - 80 CRI, 3500K L40 - 80 CRI, 4000K H30 <sup>3</sup> - 90 CRI, 3000K H35 <sup>3</sup> - 90 CRI, 3500K H40 <sup>3</sup> - 90 CRI, 4000K TW - Tunable White 90 CRI, 2700K-6000K	U - Universal 1 - 120 Volt 2 - 277 Volt	<u>Dimming 0-10V</u> D - Dim to 1% (Standard) D0 <sup>4</sup> - Dim to 1%, Fade to Off D02 - Eldoed Solodrive, Dim to 0% TW10 - Tunable White LUTRON - See Page 2	<u>DALI Dimming</u> ELE - Eldoed Ecodrive, Dim to 1% ELS - Eldoed Solodrive, Dim to 0% TWDA - DALI Tunable White	<u>Qty of Power Circuits</u> 1 - 1 Circuit 2 - 2 Circuits  <u>Qty of Control Circuits</u> 1 - 1 Circuit 2 - 2 Circuits  <u>Options</u> B10 - 10 Watt Battery Pack (CEC Compliant) B15 - 15 Watt Battery Pack (CEC Compliant) GTD <sup>5</sup> - Generator Transfer Device (120V or 277V) EM - Dedicated

**Notes:**

1. Nominal lumen output for 3500K and 80 CRI.
2. Consult factory for custom lumen packages.
3. Efficacy reduction with 90CRI, see Light Output & Energy Consumption table above.
4. Consult factory for specifications and manufacturer.
5. Multiple power and control circuits can be accommodated. In Indirect fixtures, the power and control circuits will be left to right within a fixture/row. Consult factory if the sum of the two numerals exceeds 4 (i.e. 22). Unable to accommodate left-right zoning in fixtures 5' or less.
6. The EM Option will illuminate the direct light of a 4' section in fixtures 6' or greater and the entire fixture in 5' or less.
7. Battery Pack not available in fixtures 3' or less.
8. GTD emergency option is voltage specific; specify 120V or 277V.

\*See Page 4 for Shape Ordering Information.

INDIRECT SHIELDING	FIXTURE FINISH	MOUNTING			LENGTH <sup>®</sup>	OPTIONS
<b>O</b> - Open <b>DG</b> - Dust Guard <b>BW</b> - Batwing Optic <b>ASYM</b> - Asymmetric Optic	<b>WH</b> - White Painted Finish <b>SV</b> - Silver Painted Finish <b>BK</b> - Black Painted Finish <b>CC</b> - Custom Color <b>AG</b> - Two Tone Ash Gray Wood Grain <b>BG</b> - Light Black Gunstoack Wood Grain <b>EW</b> - Ebony Walnut Wood Grain <b>ST</b> - Delicate Straight Wood Grain	<b>Ceiling Type</b> <b>T1</b> - Aircraft Cable to 1" Grid <b>T9</b> - Aircraft Cable to 9/16" Grid <b>TS</b> - Aircraft Cable to Slotted Grid <b>SR</b> - Aircraft Cable to Surface	<b>Mounting Hardware Finish</b> <b>W</b> - White Canopies and Cord <b>B</b> - Black Canopies and Cord	<b>Suspension Length</b> <b>048</b> - 48" Adjustable Aircraft Cable <b>120</b> - 120" Adjustable Aircraft Cable <b>240</b> - 240" Adjustable Aircraft Cable	<b>2</b> - 24" <b>3</b> - 36" <b>4</b> - 48" <b>5</b> - 60" <b>6</b> - 72" <b>7</b> - 84" <b>8</b> - 96" <b>XX</b> - Specify lengths in 6" increments.	<b>DSOS</b> - Combined Daylight and Occupancy Sensor <b>GLR</b> - Fusing

## PHOTOMETRICS

### RP13-V

#### INDIRECT DISTRIBUTION

Cat# RP13-V-10L35-U-D-11-WH-4

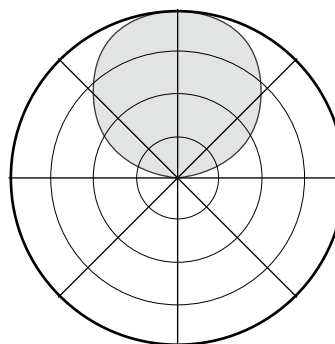
ITL Test #: ITL91190

Total Delivered Lumens: 4724

Input Watts: 38.5

Efficacy: 123 lm/W

100% Uplight



#### Zonal Lumen Summary

Zone	Lumens	%Fixt
90-110	286	6
90-120	918	19
90-130	1734	37
90-150	3450	73
90-180	4724	100
0-180	4724	100

## LIGHTING CONTROL

Nulite provides flexibility in meeting the needs of each project by easily integrating with several manufacturers for lighting control options.

**0-10V:** A non-directional dimming system. The control system tells the LED driver what to do and it adjusts according to the voltage on the control circuit.

**DALI:** Digitable Addressable Lighting Interface is a simple two-wire control connection that goes to each fixture to form the control network. It allows LED drivers to be controlled independently from lighting control circuits.

**TUNABLE WHITE:** Aims to create lighting environments that are optimal for visual, mental, and biological health by being able to tune the color temperature of a light source. Utilizes a number of controllable channels to adjust the color temperature of the luminaire's white light output with precise varying of color temperature from a warm tone to a cool tone.

NULITE CAT#	DRIVER MANUFACTURER / SERIES	DIMMING / CONTROL PROTOCOL	DIM RANGE	NOTES/ DESCRIPTION
<b>D</b>	Signify Xitanium, Osram OTI	0-10v	100% -1%	Standard Nulite driver, reflects base fixture price
<b>D0</b>	Signify Xitanium, Osram OTI	0-10v	100% - 1% (Steps from 1% to 0% or OFF)	Standard Nulite driver, reflects base fixture price
<b>D02</b>	Eldoed Solodrive	0-10v	100% - 0%	Able to choose from 4 dimming curve options
<b>L11</b>	Lutron Hi-Lume Premier (PEQOE) Max lumen package 03	0-10v	100% - 0.1%	Hi-lume Premier 0.1% EcoSystem LED driver with Soft-on, Fade-to-Black dimming technology
<b>L15</b>	Lutron Hi-Lume Series (LDE1)	0-10v	100% - 1%	Hi-Lume 1% EcoSystem LED driver with Soft-on, Fade-to-Black dimming technology
<b>L16</b>	Lutron 5 Series (LDE5)	0-10v	100% - 5%	5 Series EcoSystem LED Driver
<b>ELE</b>	Eldoed Ecodrive	DALI	100% - 1%	Ability to choose from 2 dimming curve options
<b>ELS</b>	Eldoed Solodrive	DALI	100% - 1%	
<b>TW10</b>	Eldoed Dual Drive combined with Dual 0-10v DALI Translator	Tunable White, 0-10v	100% - 0%	2 channel tunable white system mixes 2700K and 6000K LEDs on the same Nulite LED PCB to create any CCT between 2700K and 6000K. Two channel drivers will be programmed for constant lumen output throughout the CCT range.
<b>TWDA</b>	Eldoed Dual Drive	Tunable White, DALI	100% - 0%	

## FIXTURE/SHAPE INFORMATION

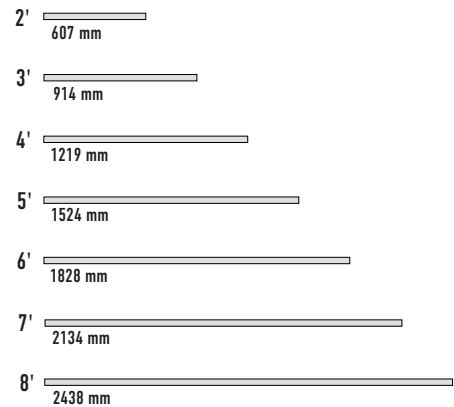
## STANDARD LENGTHS

### ORDERING INFORMATION: LINEAR ROW EXAMPLE

RP13-V-10L35-U-D-11-WH-T1W48-22'

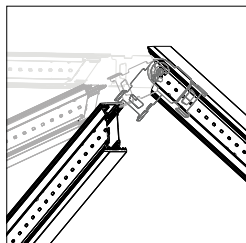
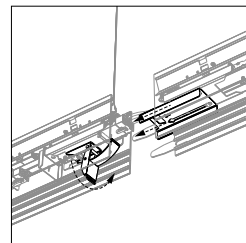
For linear individuals and continuous runs, specify run lengths to the nearest 6" for standard configurations. Nulite can achieve lengths to the nearest 1/8". Custom lead times and drawings may apply.

**Note: End caps add an additional 1/4" to the overall fixture/row length.**



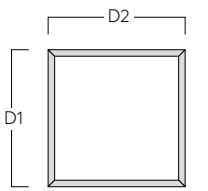
## CONTINUOUS ROW LENGTHS

		Run Length																																														
		2'	3'	4'	5'	6'	7'	8'	9'	10'	11'	12'	13'	14'	15'	16'	17'	18'	19'	20'	21'	22'	23'	24'	25'	26'	27'	28'	29'	30'	31'	32'	33'	34'	35'	36'	37'	38'	39'	40'	41'	42'	43'	44'				
Number of Housings	2'	1																																														
	3'		1																																													
	4'			1				1	1	1	1						1	1	1	1						1	1	1	1						1	1	1				1	1	1	1				
	5'				1			1				1					1				1					1				1					1													
	6'					1			1					1				1				1				1					1					1												
	7'						1				1				1				1				1					1				1					1						1					
	8'							1				1	1	1	1	1	2	1	1	1	1	2	2	2	2	3	2	2	2	3	3	3	3	4	3	3	3	4	4	4	4	5	4	4	4	4	5	

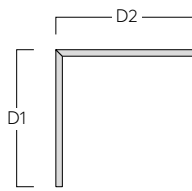
Adjustable Bracket  
design

Tool less continuous joining

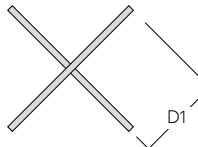
## STANDARD SHAPES



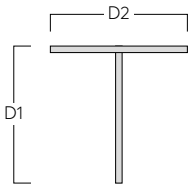
Squares and Rectangles (SQ)



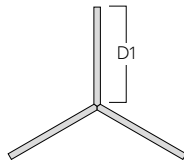
L Shapes (L)



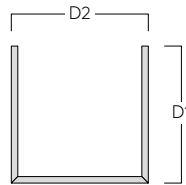
X Shapes (X)



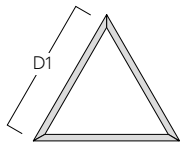
T Shapes (T)



Tri Prong Shapes (TP)



U Shapes (U)



Equilateral Triangles (EQ)

### ORDERING INFORMATION: "U" SHAPE EXAMPLE

RP13-V-10L35-U-D-11-WH-T1W48-U/D1-8'/D2-15'

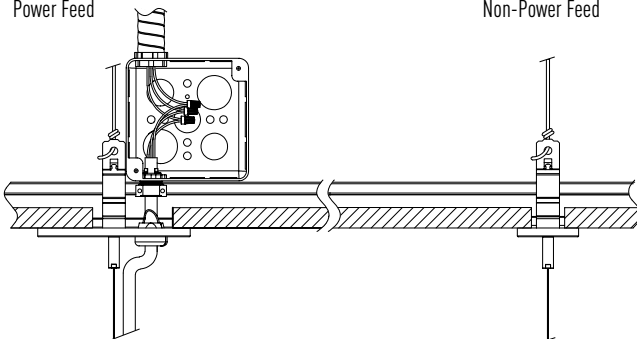
#### Note:

Although these are standard shapes, take-offs and shop drawings may be required depending on field conditions, ceiling type, etc. Consult your local Nulite Rep for further details.

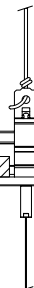
## INSTALLATION DETAILS

### A/C TO GRID CEILING (OPTION T1, T9 OR TS)

Power Feed

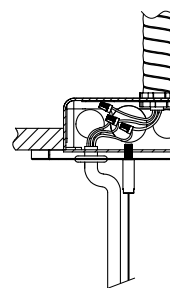


Non-Power Feed

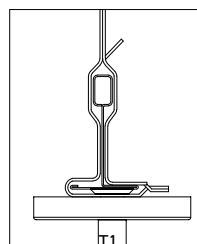
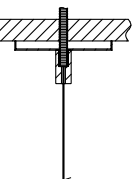


### A/C TO STRUCTURE CEILING (SR)

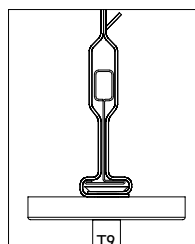
Power Feed



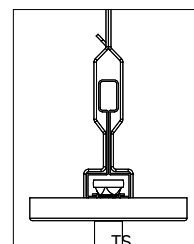
Non-Power Feed



15/16" Grid



9/16" Grid

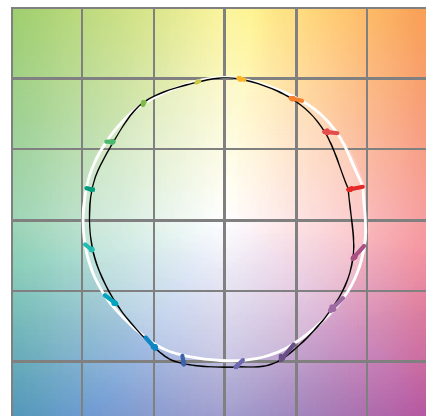
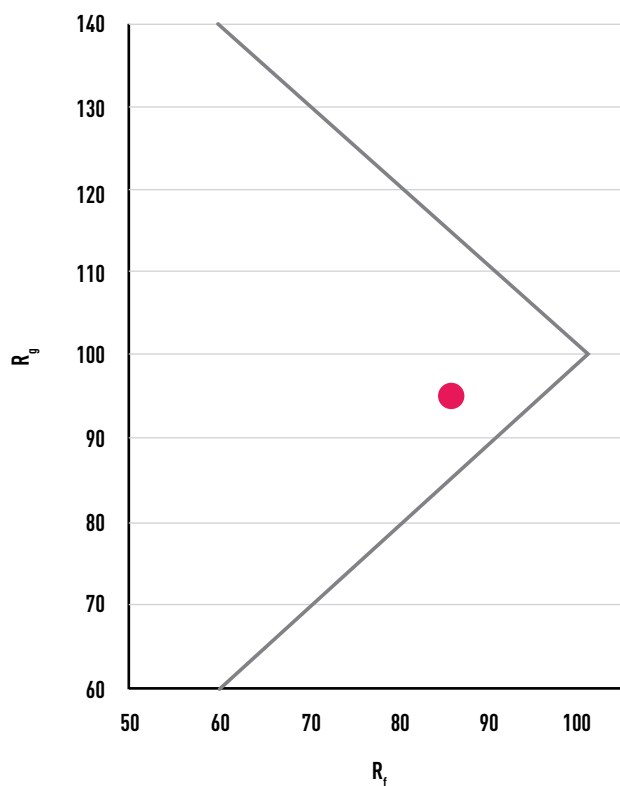
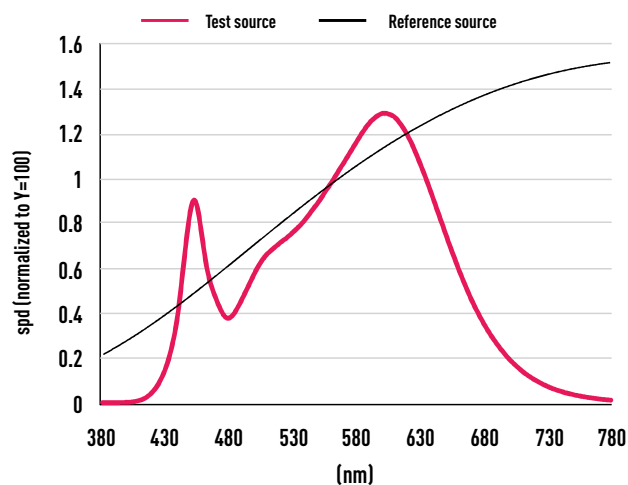


Slot Grid

# TM-30 DATA

Cat # RP13-V-10L35-1C-U-D-W-4

$R_f$	86	CCT (K)	3461
$R_g$	96	$D_{uv}$	-0.0005
		$u'$	0.2369
LER	323	$v'$	0.5114



Color Vector Graphic



Color Distortion Graphic

HUE BIN	$R_F$	GRAPHIC SHIFTS (%)
		HUE
1	81	0%
2	83	6%
3	80	9%
4	90	5%
5	93	3%
6	94	-2%
7	91	-4%
8	93	0%
9	90	3%
10	84	8%
11	83	10%
12	85	2%
13	88	-5%
14	81	-13%
15	80	-13%
16	78	-10%

## PRODUCT DETAILS

**LIGHT SOURCE** LED custom linear array is mounted with quick-connect wiring to facilitate service. A wide array of lumen packages available. All luminaire configurations tested in accordance with IESNA LM-79. Diodes tested in accordance with IESNA LM-80.

**DRIVER** Standard constant current integral electronic driver with 0-10V dimming input standard; dimming range from 100% down to 1%. Dims to 0%, DALI, and Tunable white available. Universal (U), 120 volt (1), and 277 volt (2).

**OPTIONAL TUNABLE WHITE** Aims to create lighting environments that are optimal for visual, mental, and biological health by being able to tune the color temperature of a light source. Utilizes a number of controllable channels to adjust the color temperature of the luminaire's white light output with precise varying of color temperatures from a warm tone to a cool tone.

**OPTIONAL DALI** Digital Addressable Lighting Interface is a simple two-wire control connection that goes to each fixture to form the control network. DALI enables dimmable transformers, relay modules, emergency fittings, and controllers from different manufacturers to be mixed and matched into a single control system, allowing LED drivers to be controlled independently from lighting control circuits.

**OPTIONAL BATTERY AND EMERGENCY OPTIONS** Recyclable Ni-Cad battery pack. Battery run time is 90 minutes. Recharge time of 24 hours. Battery Packs available in 6W or 10W. Total output is determined by exact efficacy of specific configuration multiplied by battery wattage (i.e. RP13-V-10L35-1C-U-D-W-4 with a 10W battery pack is a 1227 battery lumen output). Battery option not available in lengths 3' or less. Entire direct fixture on battery for lengths 5' or less. Half of direct fixture on battery for 6' to 8' housing lengths. Emergency or nightlight circuit available.

**SECURE TOOL-FREE JOINING DESIGN** A dynamic mechanism that ensures stable positioning, no light leak, and speeds up installation in continuous rows. Constructed with spring steel over center draw latch, 22 gauge thick.

**FLEXIBLE JOINING DESIGN** Mitered corners in 45-degree, 60-degree, 90-degree, 120-degree, and 135-degree for ultimate design capabilities. Constructed with spring steel over center draw latch, 22 gauge thick. Utilizes tool-free joining design. Consult factory for custom angles.

**MOUNTING** Designed to install into grid (T1, T9 or TS clips), inaccessible, and surface ceilings. Aircraft cable suspended, individual mount or continuous runs. Supplied with 5" (127mm) power and 2" (50.8 mm) non-power canopies. Refer to installation instructions for appropriate ceiling detail.

**WARRANTY** 5-year limited warranty on LED and driver from date of shipment. Refer to the full warranty details on [www.nulite-lighting.com/products/184](http://www.nulite-lighting.com/products/184).

**LUMINAIRE LENGTH** Any length, 2-foot minimum, in increments down to 6". 8-foot maximum section length. 50-foot maximum continuous run length per circuit.

**WEIGHT** ~1.5 lbs/ft.

**APPROVALS** ETL listed, conforms to UL Standard 1598 / 8750 and CSA Standard C22.2, indoor dry/damp locations.

### INDEPENDENT TESTING

IESNA LM79 - Testing method for the Electrical and Photometric Measurements of Solid State Lighting on the complete system, such as luminous flux, electrical power, luminous intensity distribution, and various properties of chromaticity.

IESNA LM80 - Testing method for measuring lumen maintenance of LED light sources, applies to the LED package, array or module alone, not the complete system

IES TM-30-15 - Testing method for effectively evaluating and communicating a light source's color rendering properties.