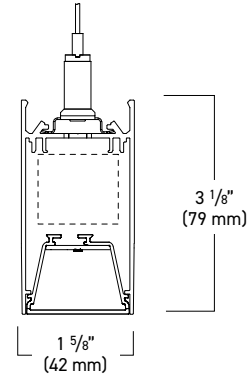
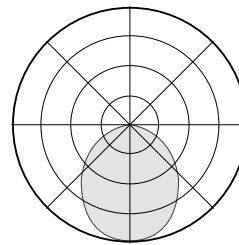


REGOLO 1 RP13 Direct

Pendant / Flush Lens
Integral Driver



RP13-D (Flush Frosted Lens)
100% Downtight



Light Output and Energy Consumption*

Light Level	lm/ft	Watts/ft	Efficacy
03	274.5	2.6	106
05	526.5	4.8	110
08	750.3	7.1	106

Lumen output may vary. 3500K / 80 CRI used for above results.

Multipliers for 80CRI: 3000K(1.97) & 4000K(1.03)

Multipliers for 90CRI: 3000K(1.81), 3500K(1.84) & 4000K(1.86)

- Micro-scale functional pendant luminaire that provides unlimited lighting possibilities for creative design.
- Precision cut extruded aluminum housing. Housing standard finish is electrostatically applied textured white powder coat paint. Optional silver, black, or custom color paint finishes.
- Long-life distributed LED array in a variety of lumen output packages. LED color is available in 3000K, 3500K or 4000K with a CRI of 80 or 90. Custom outputs are available. Module is replaceable. L90>100,000 hours. Tunable white utilizes 50% 2700K and 50% 6500K diodes with a CRI of 90.
- Innovative high reflective acrylic lens assembly reduces internal components and utilizes a metal core PCBA that snaps into place. Removable for maintenance. Optimizes thermal management.

ORDERING INFORMATION* / Example: RP13-D-08-H30-U-D-21-FF-WH-SR-W-120-8

*See Page 3 for Shape Ordering Information

RP13-D								
SERIES	LUMEN PACKAGE ¹	CRI/ CCT	VOLTAGE	DRIVER		CIRCUITING ⁵ / EMERGENCY OPTIONS ⁶		
RP13-D - Regolo 1.625" Wide, 3.125" Tall Direct Integral Pendant	03 - 250 lm/ft 05 - 500 lm/ft 08 - 750 lm/ft XX ²	L30 - 80 CRI, 3000K L35 - 80 CRI, 3500K L40 - 80 CRI, 4000K H30 ³ - 90 CRI, 3000K H35 ³ - 90 CRI, 3500K H40 ³ - 90 CRI, 4000K TW - Tunable White 90 CRI, 2700 - 6000K	U - Universal 1 - 120 Volt 2 - 277 Volt	Dimming 0-10V D - Dim to 1% (Standard) D0 ⁴ - Dim to 1%, Fade to Off D02 - Eldoled Solodrive, Dim to 0% TW10 - Tunable White LUTRON - See Page 2	DALI Dimming ELE - Eldoled Ecodrive, Dim to 1% ELS - Eldoled Solodrive, Dim to 0% TWDA - DALI Tunable White	Qty of Power Circuits 1 - 1 Circuit 2 - 2 Circuits	Qty of Control Circuits 1 - 1 Circuit 2 - 2 Circuits	Options B10 - 10 Watt Battery Pack (CEC Compliant) B15 - 15 Watt Battery Pack (CEC Compliant) GTD ⁸ - Generator Transfer Device (120V or 277V) EM - Dedicated Emergency Circuit

Notes:

- Nominal lumen output for 3500K and 80 CRI
- Consult factory for custom lumen packages.
- Efficacy reduction with 90CRI, see Light Output & Energy Consumption table above.
- Consult factory for specifications and manufacturer.
- Multiple power and control circuits can be accommodated. In Direct fixtures, the power and control circuits will be left to right within a fixture/row. Consult factory if the sum of the two numerals exceeds 4 (i.e. 22). Unable to accommodate left-right zoning in fixtures 5' or less.
- The EM Option will illuminate the direct light of a 4' section in fixtures 6' or greater and the entire fixture in 5' or less.
- Battery Pack not available in fixtures 3' or less.
- GTD emergency option is voltage specific; specify 120V or 277V.

SHIELDING	FIXTURE FINISH	MOUNTING		LENGTH	OPTIONS
FF - Frosted Flush Lens FRL - Frosted Dropped Lens (Luminous Ends)	WH - White Painted Finish SV - Silver Painted Finish BK - Black Painted Finish CC - Custom Color AG - Two Tone Ash Gray Wood Grain BG - Light Black Gunstock Wood Grain EW - Ebony Walnut Wood Grain ST - Delicate Straight Wood Grain	Ceiling Type T1 - Aircraft Cable to 1" Grid T9 - Aircraft Cable to 9/16" Grid TS - Aircraft Cable to Slotted Grid SR - Aircraft Cable to Surface	Mounting Hardware Finish W - White Canopies and Cord B - Black Canopies and Cord	Suspension Length 048 - 48" Adjustable Aircraft Cable 120 - 120" Adjustable Aircraft Cable 240 - 240" Adjustable Aircraft Cable	2 - 24" 3 - 36" 4 - 48" 5 - 60" 6 - 72" 7 - 84" 8 - 96" XX - Specify lengths in 6" increments.

PHOTOMETRICS

RP13 FLUSH LENS

DIRECT DISTRIBUTION

Cat # RP13-D-05L35-U-D-11-FF-WH-4

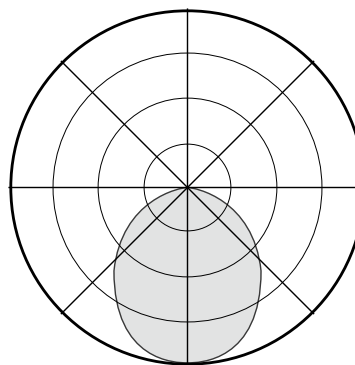
ITL Test #: ITL91006

Total Delivered Lumens: 2106

Input Watts: 19.1

Efficacy: 110.3 lm/W

100% Downlight



Luminance Data (CD/SQ.M)

Angle in Degrees	Average 0-Deg	Average 45-Deg	Average 90-Deg
45	14727	14085	13327
55	13374	12763	11972
65	11759	11320	10588
75	9640	9401	8844
85	5678	6625	6625

Zonal Lumen Summary

Zone	Lumens	%Fixt
0-30	651	31
0-40	1032	49
0-60	1720	82
0-90	2106	100
0-180	2106	100

LIGHTING CONTROL

Nulite provides flexibility in meeting the needs of each project by easily integrating with several manufacturers for lighting control options.

0-10V: A non-directional dimming system. The control system tells the LED driver what to do and it adjusts according to the voltage on the control circuit.

DALI: Digitable Addressable Lighting Interface is a simple two-wire control connection that goes to each fixture to form the control network. It allows LED drivers to be controlled independently from lighting control circuits.

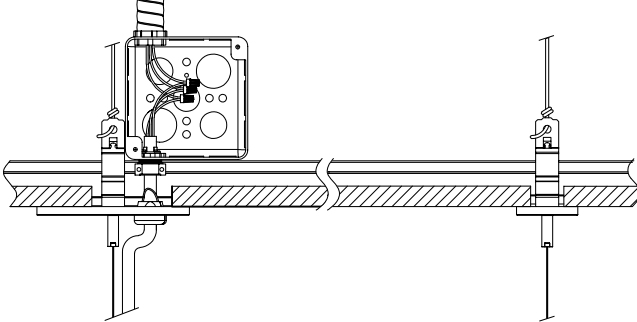
TUNABLE WHITE: Aims to create lighting environments that are optimal for visual, mental, and biological health by being able to tune the color temperature of a light source. Utilizes a number of controllable channels to adjust the color temperature of the luminaire's white light output with precise varying of color temperature from a warm tone to a cool tone.

NULITE CAT#	DRIVER MANUFACTURER / SERIES	DIMMING / CONTROL PROTOCOL	DIM RANGE	NOTES/ DESCRIPTION
D	Signify Xitanium, Osram OT1	0-10v	100% -1%	Standard Nulite driver, reflects base fixture price
D0	Signify Xitanium, Osram OT1	0-10v	100%- 1% (Steps from 1% to 0% or OFF)	Standard Nulite driver, reflects base fixture price
D02	Eldoed Solodrive	0-10v	100% - 0%	Able to choose from 4 dimming curve options
L11	Lutron Hi-Lume Premier (PEQ0E) Max lumen package 03	0-10v	100% - 0.1%	Hi-Lume Premier 0.1% EcoSystem LED driver with Soft-on, Fade-to-Black dimming technology
L15	Lutron Hi-Lume Series (LDE1)	0-10v	100% - 1%	Hi-Lume 1% EcoSystem LED driver with Soft-on, Fade-to-Black dimming technology
L16	Lutron 5 Series (LDE5)	0-10v	100% - 5%	5 Series EcoSystem LED Driver
ELE	Eldoed Ecodrive	DALI	100% - 1%	Able to choose from 2 dimming curve options
ELS	Eldoed Solodrive	DALI	100% -1%	
TW10	Eldoed Dual Drive combined with Dual 0-10v DALI Translator	Tunable White, 0-10v	100% - 0%	2 channel tunable white system mixes 2700K and 6000K LEDs on the same Nulite LED PCB to create any CCT between 2700K and 6000K. Two channel drivers will be programmed for constant lumen output throughout the CCT range.
TWDA	Eldoed Dual Drive	Tunable White, DALI	100% - 0%	

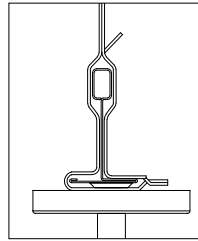
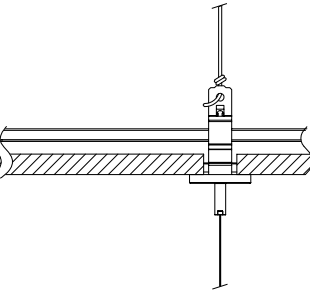
INTEGRAL DRIVER PENDANT INSTALLATION DETAILS

A/C TO GRID CEILING (OPTION T1, T9 OR TS)

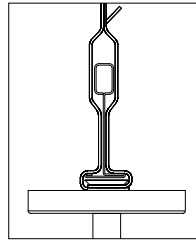
Power Feed



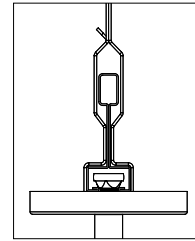
Non-Power Feed



T1
15/16" Grid



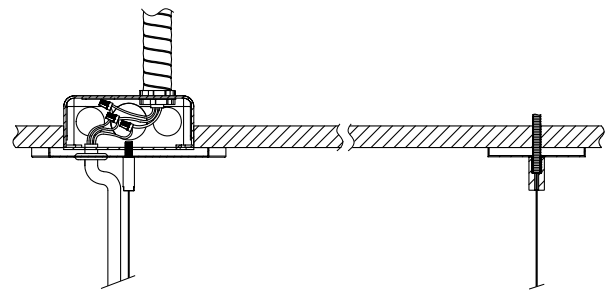
T9
9/16" Grid



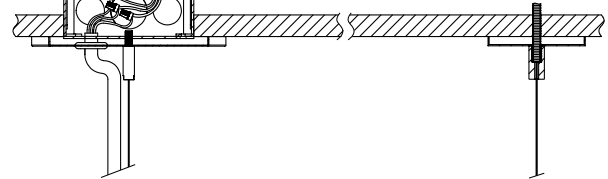
TS
Slot Grid

A/C TO STRUCTURE CEILING

Power Feed



Non-Power Feed



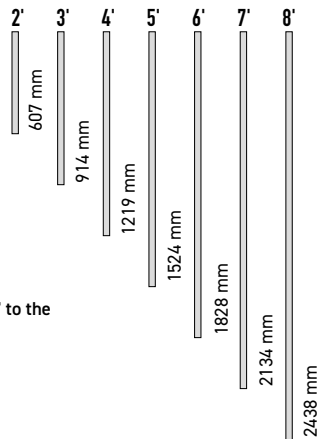
STANDARD LENGTHS

ORDERING EXAMPLE FOR STANDARD LENGTH

RP13-D-05L35-U-D-11-FF-WH-T1W048-22'

Lines

For linear individuals and continuous linear runs, specify run lengths to the nearest 6" for standard configurations. Nulite can achieve lengths to the nearest 1/8" if necessary, custom drawings and lead times may apply.

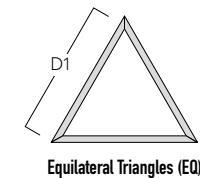
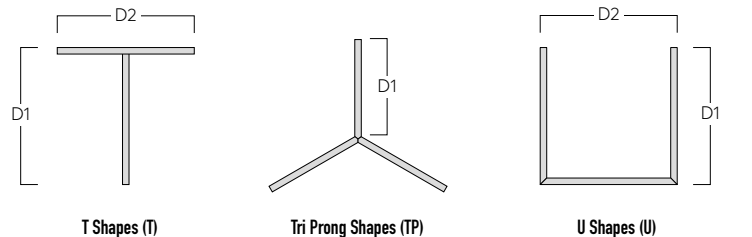
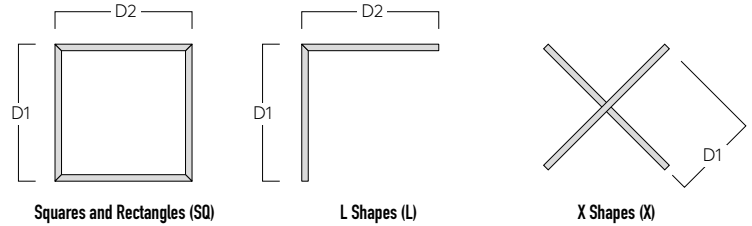


Note: End caps add an additional 1/4" to the overall fixture/row length.

STANDARD SHAPES

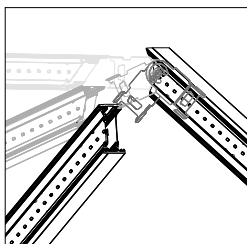
ORDERING EXAMPLE FOR (U) SHAPE

RP13-D-05L35-U-D-11-FF-WH-T1W048-22'-U/D1-8'/D2-15'

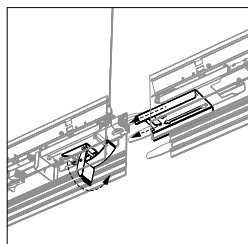


Note:

Although these are standard shapes, take offs and shop drawings may be required depending on field conditions, ceiling type, etc. Consult your local Nulite Rep for further details.



Adjustable Bracket design



Tool less continuous joining

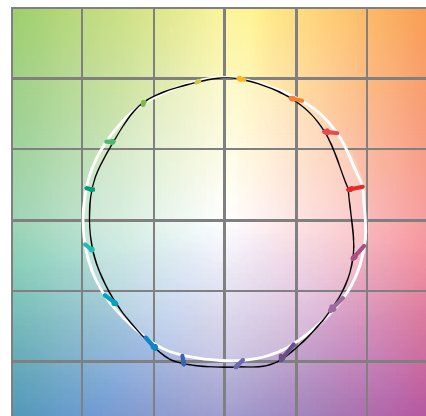
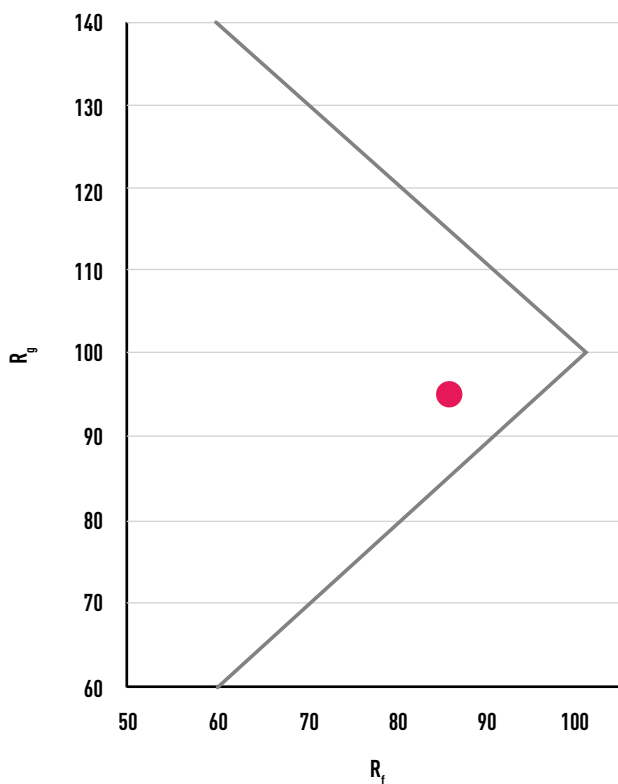
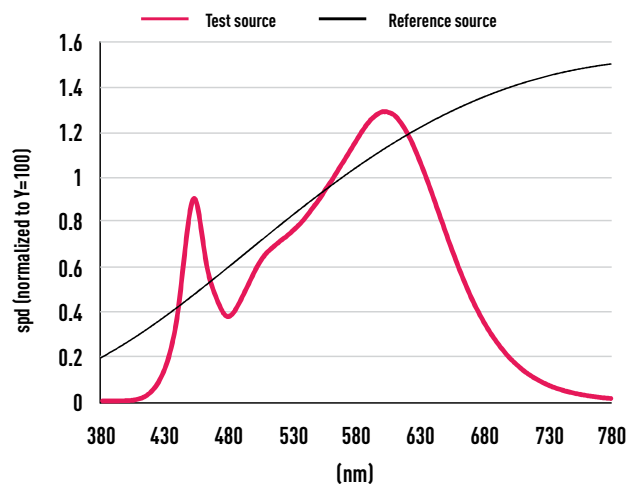
CONTINUOUS ROW LENGTHS

		Run Length																																													
		2'	3'	4'	5'	6'	7'	8'	9'	10'	11'	12'	13'	14'	15'	16'	17'	18'	19'	20'	21'	22'	23'	24'	25'	26'	27'	28'	29'	30'	31'	32'	33'	34'	35'	36'	37'	38'	39'	40'	41'	42'	43'	44'			
Number of Housings	2'	1																																													
	3'		1																																												
	4'			1				1	1	1	1						1	1	1	1					1	1	1	1						1	1	1					1	1	1	1			
	5'				1			1				1					1				1				1		1			1				1		1				1							
	6'					1				1				1				1				1					1				1				1							1					
	7'						1				1				1				1				1					1				1				1						1					
	8'							1				1	1	1	1	1	2	1	1	1	1	2	2	2	2	3	2	2	2	3	3	3	3	4	3	3	3	4	4	4	4	5	4	4	4	5	

TM-30 DATA

Cat # RP13-D-FF-05L35-1C-U-D-W-4

R_f	86	CCT (K)	3449
R_g	96	D_{uv}	-0.0006
		u'	0.2373
LER	323	v'	0.5115



Color Vector Graphic



Color Distortion Graphic

HUE BIN	R_F	GRAPHIC SHIFTS (%)
		HUE
1	80	0%
2	83	5%
3	81	8%
4	91	4%
5	93	2%
6	95	-2%
7	90	-3%
8	92	1%
9	88	5%
10	82	10%
11	82	10%
12	85	2%
13	88	-6%
14	80	-14%
15	80	-13%
16	78	-10%

PRODUCT DETAILS

LIGHT SOURCE LED custom linear array is mounted with quick-connect wiring to facilitate service. Three lumen packages are available (03, 05, and 08). All luminaire configurations tested in accordance with IESNA LM-79. Diodes tested in accordance with IESNA LM-80.

DRIVER Standard constant current integral electronic driver with 0-10V dimming input standard; dimming range from 100% down to 1%. Dims to 0%, DALI, and Tunable white available. Universal (U), 120 volt (1), and 277 volt (2).

OPTIONAL TUNABLE WHITE Aims to create environments that are optimal for visual, mental, and biological health by being able to tune the color temperature of a light source. Utilizes a number of controllable channels to adjust the color temperature of the luminaire's white light output with precise varying of color temperatures from a warm tone to a cool tone.

OPTIONAL DALI Digital Addressable Lighting Interface is a simple two-wire control connection that goes to each fixture to form the control network. DALI enables dimmable transformers, relay modules, emergency fittings, and controllers from different manufacturers to be mixed and matched into a single control system, allowing LED drivers to be controlled independently from lighting control circuits.

OPTIONAL BATTERY AND EMERGENCY OPTIONS Recyclable Ni-Cad battery pack, battery run time is 90 minutes. Recharge time of 24 hours. 6W or 10W battery packs are available. Total output is determined by exact efficacy of specific configuration multiplied by battery wattage (i.e. RP13-D-FF-05L35-1C-U-D-W-4 with a 10W battery

pack is a 1103 battery lumen output). Battery option not available in less than 4' lengths. Entire direct fixture housing is on battery for lengths up to 5'. Half of direct fixture is on battery for 6' - 8' housing lengths. Emergency or night light circuit available.

SECURE TOOL-FREE JOINING DESIGN A dynamic mechanism that ensures stable positioning, no light leak, and speeds up installation for continuous rows. Constructed with spring steel over center draw latch, 22 gauge thick.

FLEXIBLE JOINING DESIGN Mitered corners in 45-degree, 60-degree, 90-degree, 120-degree, and 135-degree for ultimate design capabilities. Constructed with spring steel over center draw latch, 22 gauge thick. Utilizes tool-free joining design. Consult factory for custom angles

MOUNTING Designed to install into grid (T1, T9 or TS clips), inaccessible, and surface ceilings. Aircraft cable suspended, individual mount or continuous runs. Supplied with 5" (127mm) power and 2" (50.8 mm) non-power canopies. Refer to installation instructions for appropriate ceiling detail.

WARRANTY 5-year limited warranty on LED and driver from date of shipment. Refer to the full warranty details at www.nulite-lighting.com/products/184.

LUMINAIRE LENGTH Any length, 2-foot minimum, in increments down to 6". 8-foot maximum section length. 50-foot maximum continuous run length per circuit.

WEIGHT ~1.5 lbs/ft.

APPROVALS ETL listed, conforms to UL Standard 1598 / 8750 and CSA Standard C22.2, indoor dry/damp locations.

INDEPENDENT TESTING

IESNA LM79 - Testing method for the Electrical and Photometric Measurements of Solid State Lighting on the complete system, such as luminous flux, electrical power, luminous intensity distribution, and various properties of chromaticity.

IESNA LM80 - Testing method for measuring lumen maintenance of LED light sources, applies to the LED package, array or module alone, not the complete system

IES TM-30-15 - Testing method for effectively evaluating and communicating a light source's color rendering properties.