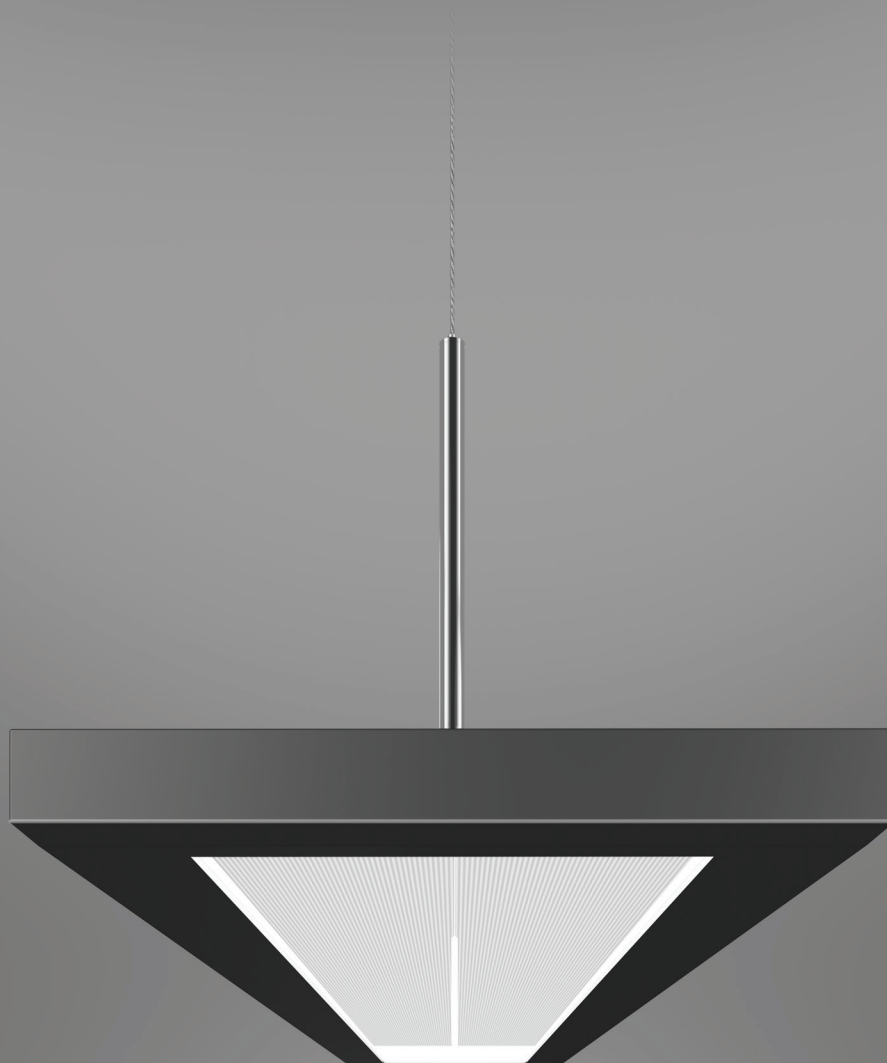


NULITE

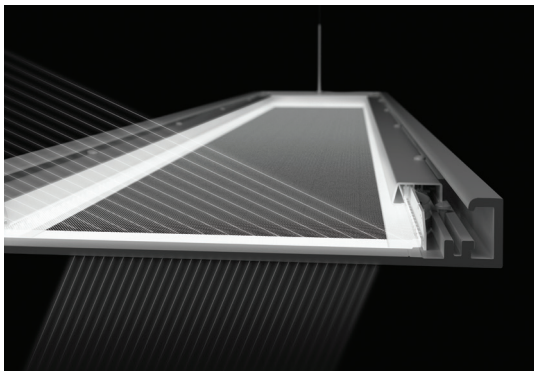
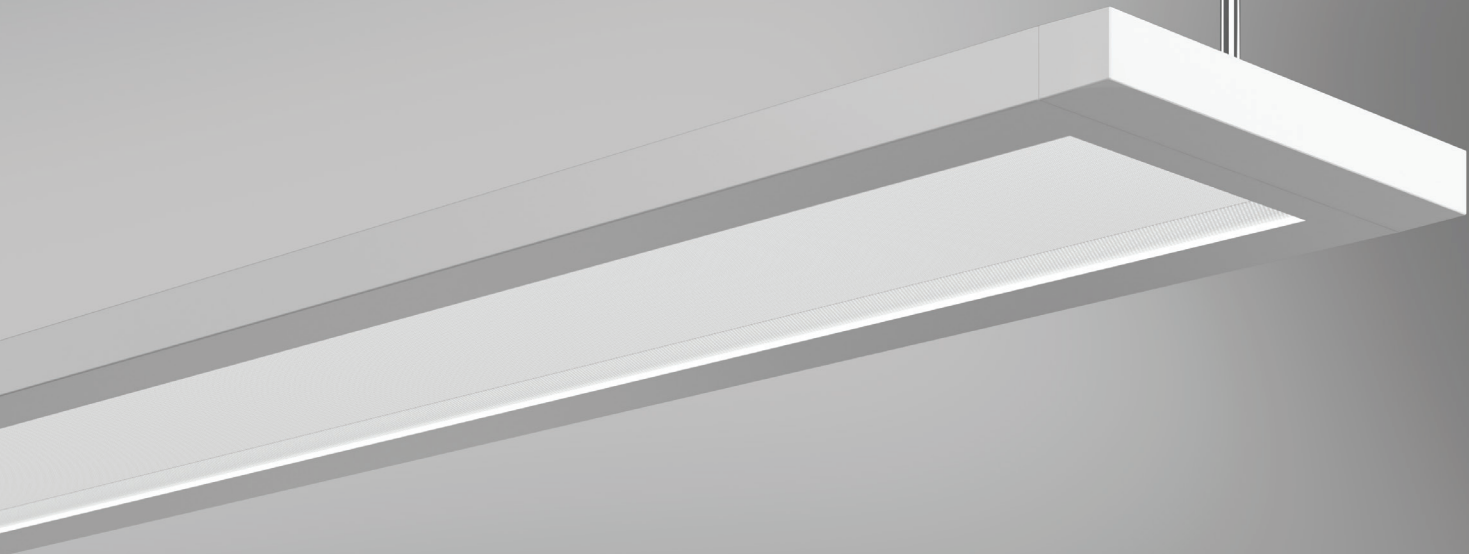


TAVO-S

PENDANT LUMINAIRE

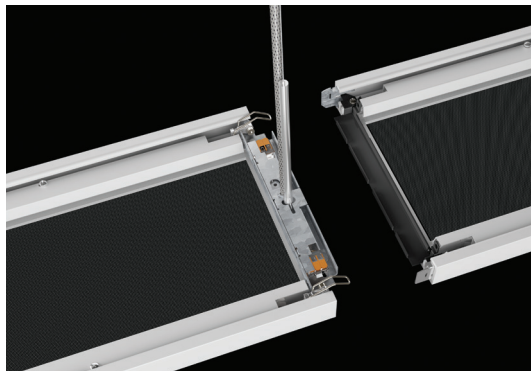
TAVO-s

PENDANT LUMINAIRE



ADVANCED OPTICS

Tavo's ultra-thin optical light guides harness the raw flux of LEDs and precisely control and deliver light to work spaces with advanced micro optical elements.



INNOVATIVE ENGINEERING

Nulite's highly engineered luminaire joining design allows for simple and intuitive assembly in the field without tools. It's torsion latches act as springs and ensure that luminaire rows snap into a laser straight line.



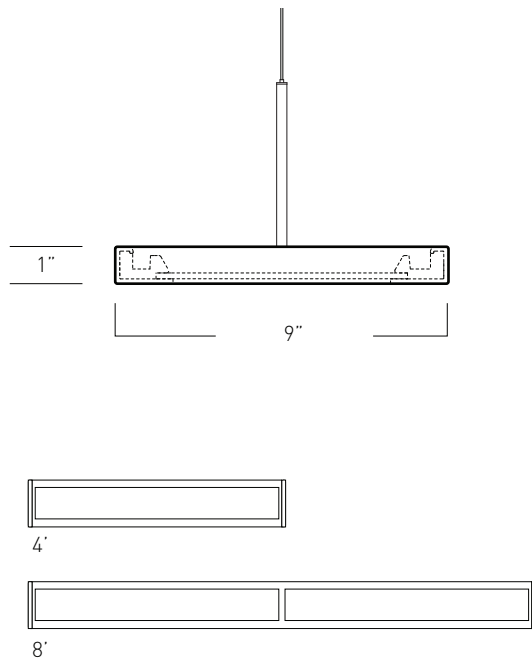
MODERN DESIGN

Tavo's timeless and minimalist design complements any interior architectural environment.



SIMPLE INSTALLATION

Unique small-scale canopy power supply works with all types of ceilings while fitting into the tightest spaces. Innovative canopy design allows for driver access without removing the luminaire.



CONSTRUCTION Extruded aluminum housing with die cast aluminum end caps. Powder coat white finish is standard. Optional silver, black or custom colors. **OPTICS** 4mm thick acrylic optical lightguide coupled with high efficacy mid power LEDs delivers controlled light distribution to create uniform ceiling surfaces and wide luminaire spacing for low glare and high visual comfort environments. **DRIVER/ENCLOSURE** Standard constant current electronic driver housed in a separate enclosure with 0-10V dimming input; dimming range from 100% down to 1%, other dimming options are available. One remote driver enclosure per unit. Universal (UNV) voltage is from 120 - 277V, 50/60 Hz. **LED MODULE** Distributed LED array in a variety of lumen output packages. LED color is available in 3000K, 3500K or 4000K with CRI of 80 or 90. Modules are replaceable. L90 ≥ 100,000 hours. **MOUNTING** Linear individual or continuous run. **LABELS** ETL listed, conforms to UL Standard 1598 / 8750 and CSA Standard C22.2. Damp location. **WARRANTY** 5-year limited warranty on LED and Driver.

Notes:

1. Nominal output for 3500K, 80 CRI
2. Consult factory for custom lumen package
3. Consult factory for additional options
4. Consult factory for specifications and custom dimming options
5. Please specify 1 - 120 volt or 2 - 277 volt

SERIES

TVS - Tavo pendant with squared corner end caps

LIGHT DISTRIBUTION

55 - 54% Downlight, 46% Uplight

73 - 66% Downlight, 34% Uplight

TC (Top Cover) - 100% Downlight

LUMEN PACKAGE¹/ CCT/ CRI

08 - 781 Lms/ft	L30 - 3000K, 80 CRI
10 - 1008 Lms/ft	L35 - 3500K, 80 CRI
13 - 1256 Lms/ft	L40 - 4000K, 80 CRI
15 - 1437 Lms/ft	H30 - 3000K, 90 CRI
19 - 1741 Lms/ft	H35 - 3500K, 90 CRI
XX²	H40 - 4000K, 90 CRI

CIRCUIT³

1C - Single Circuit	1B10 - Single Circuit w/10W Battery Pack
1E - Single Circuit w/EM Circuit	1B12 - Single Circuit w/12W Battery Pack
1B5 - Single Circuit w/5W Battery Pack	CEC - CEC Compliant w/10W Battery Pack
1B7 - Single Circuit w/7W Battery Pack	

DRIVER⁴

Dimming 0-10V	DALI	Lutron
D - Dim to 1% (Standard)	ELE - Eldoled Ecodrive, dims to 1%	L12 - Lutron HiLume™ 2-Wire 120V Forward Phase, dims to 1%
D0 - Dim to 1%, fade to off	ELS - Eldoled Solodrive, dims to 0%	L15 - Lutron HiLume™ H-Series, dims to 1%
D02 - Eldoled Solodrive, dims to 0%		L16 - Lutron HiLume™ 5-Series, dims to 5%

COLOR / FINISH

WH - White (Standard)	BK - Black
SV - Silver	CC³ - Custom Color

MOUNTING/ DRIVER ENCLOSURE

Grid Ceiling Plenum Enclosure	Surface Ceiling Enclosure
T1 - T1 Ceiling Grid	SR - Surface mount driver enclosure
T9 - T9 Ceiling Grid	SR-BAT - Surface mount driver enclosure with battery
TS - Slot T Grid	
Sheet Rock Ceiling/Grid Ceiling Enclosure	(Add "B" after mounting code for a black canopy)
GP - Direct Access Suspension Box	

SUSPENSION LENGTH

48 - 48" adjustable aircraft cable
120 - 120" adjustable aircraft cable

LENGTH

4' - 4' luminaire module
8' - 8' luminaire module
XX - specify run length in 4' increments

OPTIONS

OS - Occupancy sensor	ETS⁵ - Electronic transfer switch
DS - Daylight sensor	GLR - Fusing
GTD⁵ - Generator transfer device	CP - Chicago plenum



NULITE

10770 EAST 51ST AVENUE / DENVER, COLORADO 80239

P 303 287 9646 / WWW.NULITE-LIGHTING.COM