



NULITE

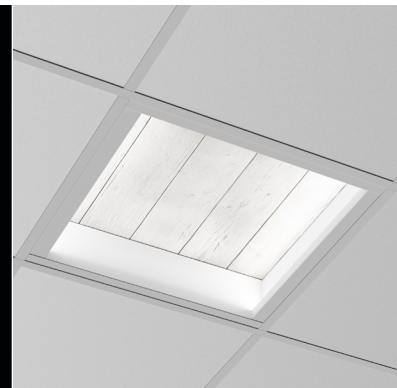
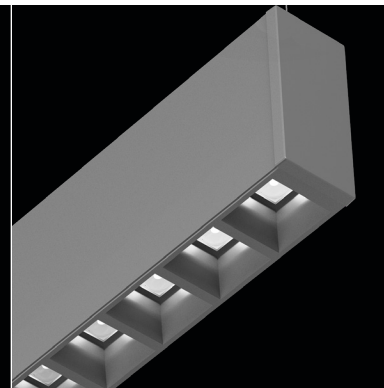
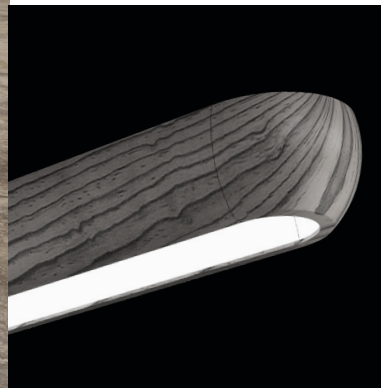
Portfolio '19



## NULITE LIGHTING

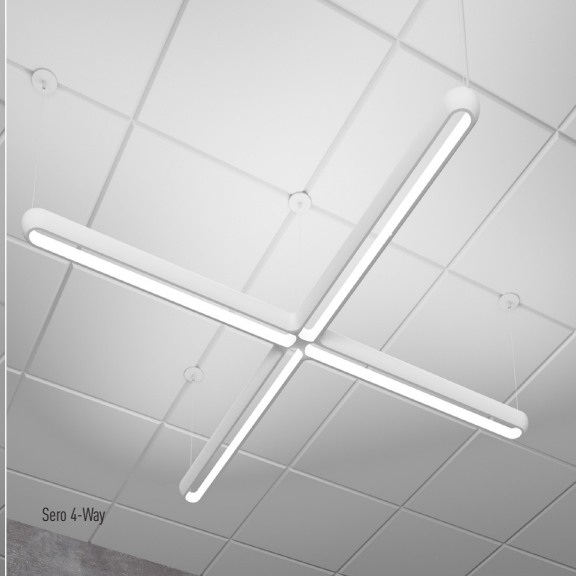
### Advanced lighting solutions for today and tomorrow

Evolving with the ever-changing requirements of modern architectural lighting, Nulite delivers uniquely inspired lighting solutions that are aimed at design creativity and personalization. With our palette of award-winning products, designers have the ability to customize space with unlimited possibilities. Our cutting-edge technology and optical packages embrace the human aspect of lighting – creating harmonious environments to help people thrive.

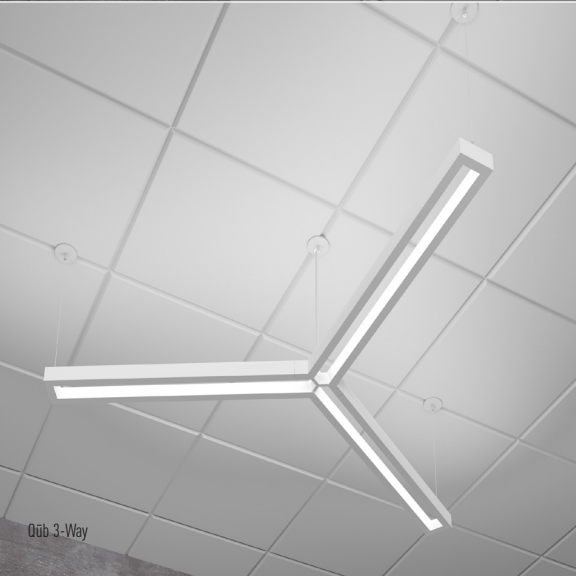




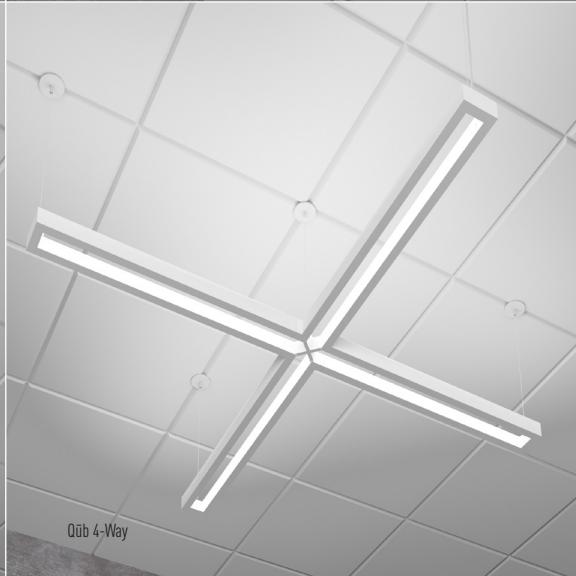
Sero 3-Way



Sero 4-Way



Qub 3-Way



Qub 4-Way

# SERO / QUB CONNECTORS

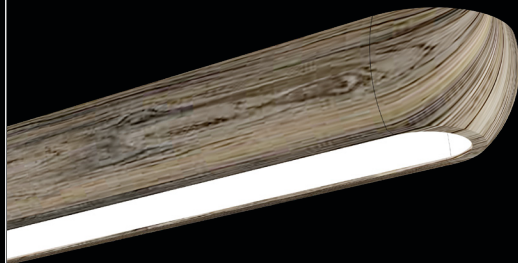
## Create, Configure, Inspire

Create unlimited configurations of visually inspiring lighting with two Sero/Qub connector designs. By utilization of the 3-way or 4-way connectors, designers will stimulate a new level of design and creativity in the modern workspace.

- Description: Architectural remote pendant series
- Mounting: Pendant
- Construction: Extruded aluminum housing with die cast aluminum end caps. Housing standard is electrostatically applied textured white powder coat paint. Optional silver, black, custom color, delicate straight grain, light black gunstock grain, two-tone ash gray grain, or ebony walnut grain paint finishes
- Light Distribution: 20% downlight / 80% uplight
- Light Levels: 850-1900 lms/ ft
- CCT: 3000k, 3500k, 4000k. Tunable white utilizes 50% 2700k and 50% 6500k diodes with a CRI of 90
- CRI: 80 or 90
- Direct / Indirect Optics: Open optical system that creates an optimal direct-indirect light distribution through the precise design and alignment of LED emitters and luminaire painted reflector surfaces
- Driver / Enclosure: Standard constant current electronic driver housed in a separate enclosure with 0-10V dimming input; dimming range from 100% down to 1%; other dimming options are available
- Sizes: 2', 4', 6', 8' for individual or continuous row specified in 2' increments
- Tri-prong, X-shape



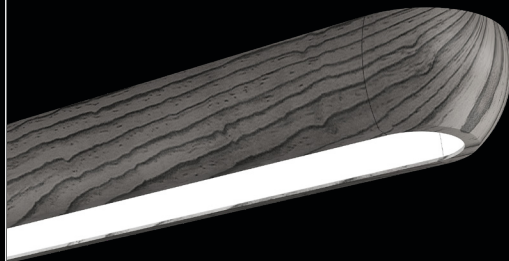
Delicate Straight Grain



Two-Tone Ash Gray



Light Black Gunstock Grain



Ebony Walnut

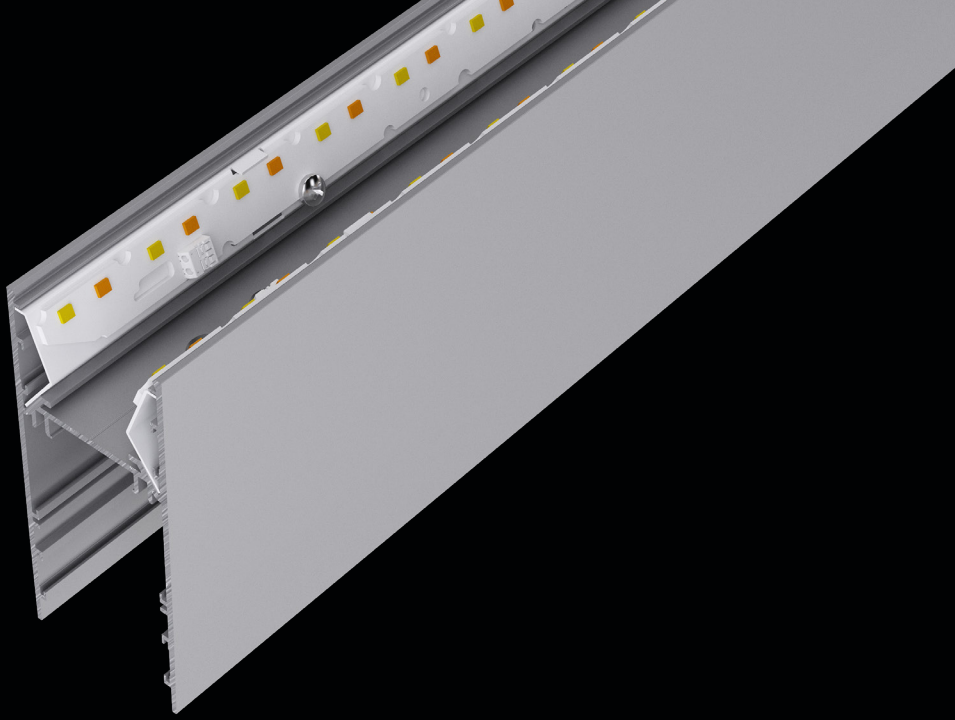
## SERO / QUB WOOD GRAIN FINISHES

### Get back to nature

Four unique wood grain finishes bring warmth to the traditional office environment. With the opportunity to tie the luminaire with other key objects and elements within a space, designers will elevate any environment to an aesthetically appealing setting.

- Description: Architectural linear remote pendant series
- Mounting: Pendant
- Construction: Extruded aluminum housing with die cast aluminum end caps. Delicate straight grain, light black gunstock grain, two-tone ash gray grain, and ebony walnut grain are water transfer printed followed by a clear coat finish for extra protection
- Light Distribution: 20% downlight / 80% uplight
- Light Levels: 850-1900 lms/ ft
- CCT: 3000k, 3500k, 4000k. Tunable white utilizes 50% 2700k and 50% 6500k diodes with a CRI of 90
- CRI: 80 or 90
- Direct / Indirect Optics: Open optical system that creates an optimal direct-indirect light distribution through the precise design and alignment of LED emitters and luminaire painted reflector surfaces
- Driver / Enclosure: Standard constant current electronic driver housed in a separate enclosure with 0-10V dimming input; dimming range from 100% down to 1%; other dimming options are available
- Sizes: 2', 4', 6', 8' for individual or continuous row specified in 2' increments
- Shapes: Tri-prong, X-shape





Regolo1 with Tunable White



## TUNABLE WHITE

### Bring the daylight inside

An intelligent lighting system that creates optimal lighting for visual, mental and biological health by following the natural colors of the day and season. By being able to adjust the color temperature of the luminaires white output with a precise varying of color temperature, the luminaire is in sync with the natural human circadian rhythm, promoting a stimulating environment that keeps people healthy and awake.

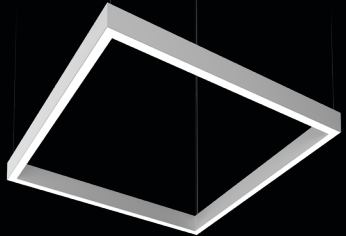
- Description: Intelligent two-channel lighting system
- Drivers: 0-10V Etdoled Dualdrive or DALI Etdoled Dualdrive
- CCT: 50% 2700k and 50% 6500k diodes with a CRI of 90
- Available with: Regolo1, Regolo2, Regolo4, Regolo6, Sottile, Bounce, Sero, Oub, Tavo

An X-shaped luminaire made of two intersecting rectangular bars, suspended by thin wires.

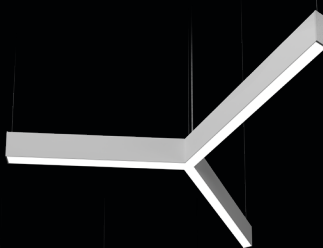
X-Shape

An L-shaped luminaire made of two rectangular bars joined at a right angle, suspended by thin wires.

L-Shape

A square or rectangular luminaire made of four rectangular bars joined at the corners, suspended by thin wires.

Square & Rectangle

A tri-prong shaped luminaire made of three rectangular bars joined at a central point, suspended by thin wires.

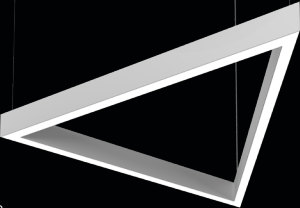
Tri-Prong Shape

A T-shaped luminaire made of two rectangular bars joined at a right angle, with one bar perpendicular to the other, suspended by thin wires.

T-Shape

A U-shaped luminaire made of three rectangular bars joined at the ends, forming a U-shape, suspended by thin wires.

U-Shape

An equilateral triangle luminaire made of three rectangular bars joined at the corners, suspended by thin wires.

Equilateral Triangle

## REGOLO1 STANDARD SHAPES

### Customization off the shelf

Stylish, unique geometric luminaires in a variety of shapes, light output, and mounting, the Regolo1 naturally integrates into any space. By offering standard shapes, lead times are reduced allowing designers to get back to creating.

- Description: Architectural standard shapes
- Mounting: Pendant, surface, recessed trimless, recessed flange, recessed mud ring
- Construction: Precision cut extruded aluminum housing. Housing standard is electrostatically applied textured white powder coat paint. Optional silver, black, or custom col or paint finishes
- Light Distribution: Direct, bi-direct, indirect
- Light Levels: Varies based on product - from 250 – 1500 lm/ft
- CCT: 3000k, 3500k, 4000k. Tunable white utilizes 50% 2700k and 50% 6500k diodes with a CRI of 90
- CRI: 80 or 90
- Direct Optics: Frosted flush Lens
- Driver / Enclosure: Standard constant current electronic driver housed with 0-10V dimming input; dimming range from 100% down to 1%; other dimming options are available
- Sizes: 2', 3', 4', 6', 7', 8'
- Shapes: X-shape, L-shape, square / rectangle, tri-prong, t-shape, u-shape, and equilateral triangle



Regolo XT Pendant

# REGOLO XT

## Engineered for eXTremes

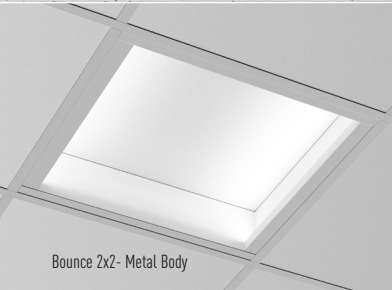
Engineered for an IP66 rating with fully sealed gasketed lens and electrical fittings, the luminaire is protected from dust, oil, and water intrusion. Durable to withstand the elements while still maintaining the clean aesthetic of an interior luminaire, the RegoloXT allows designers the ability to bring the inside aesthetic to the outside.

- Description: IP66 rated linear luminaire
- Mounting: Pendant, wall, surface, recessed flange
- Construction: Rugged .125" thick extruded aluminum housing with welded seams.
- Light Distribution: Direct, bi-direct
- Light Levels: Varies based on product - from 250 – 1000 lm/ft
- CCT: 3000k, 3500k, 4000k
- CRI: 80 or 90
- Direct Optics: Frosted flush Lens
- Indirect Optics: Frosted flush lens
- Driver / Enclosure: Standard constant current electronic driver housed with 0-10V dimming input; dimming range from 100% down to 1%; other dimming options are available
- Sizes: 2', 3', 4', 6', 7', 8' for individual or continuous row specified in 1' increments





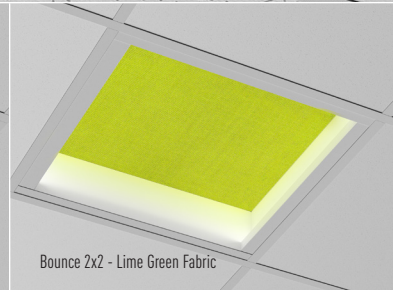
Bounce 2x2- Ceiling Tile



Bounce 2x2- Metal Body



Bounce 2x2- White Painted Wood



Bounce 2x2 - Lime Green Fabric

# BOUNCE

## Building material meets light fixture

Utilizing unlimited building materials (by others) as part of the light fixture, Bounce creates limitless opportunities by producing a unique tie to the rest of the space. LED emitters are reflected off the ceiling material, generating a soft glowing ceiling effect with low glare.

- Description: Recessed ambient lighting
- Mounting: Recessed grid
- Construction: Standard housings are die-formed 22 gauge cold rolled steel with a matte powder coat painted finish
- Light Distribution: Direct
- Light Levels: 2x2/2x4 - 2000 LM, 3000 LM, 4000 LM; 4x4 - 3000 LM, 4000 LM, 5000 LM, 6000 LM, 7000 LM, 8000 LM
- CCT: 3000k, 3500k, 4000k
- CRI: 80 or 90
- Driver / Enclosure: Standard constant current electronic driver housed with 0-10V dimming input; dimming range from 100% down to 1%; other dimming options are available
- Sizes: 2' x 2' (4" height), 2' x 4' (4" height), 4' x 4' (6" height)

NULITE

BOUNCE





Pixie w/ Square Lens

Pixie w/ Flat Lens

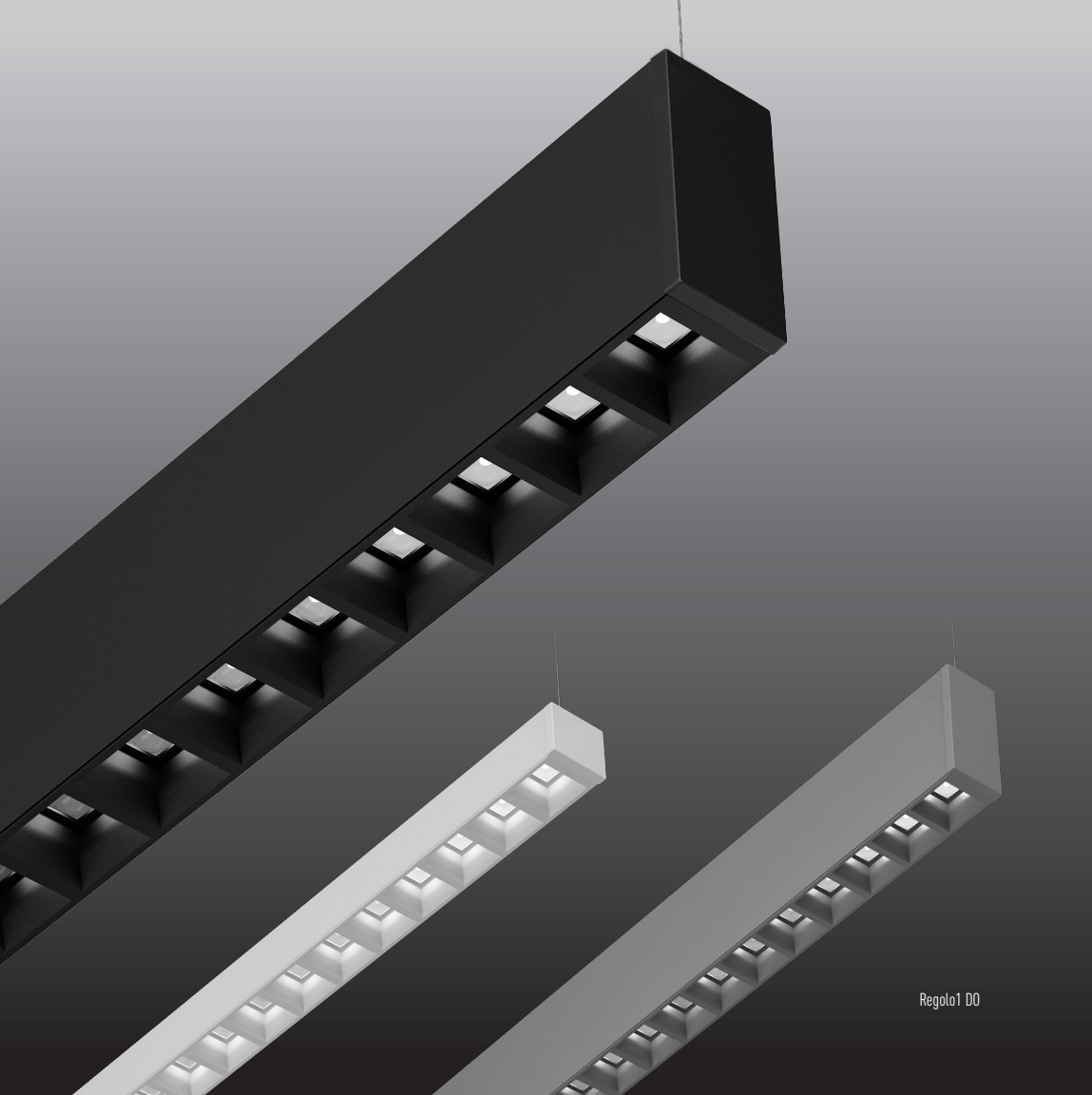
Pixie w/ Round Lens

# PIXIE

## Illuminance simplified

A simple and minimalistic design with high efficacy, effortless luminance, and lateral brightness ideal for stacks and aisles. The Pixie delivers an element of sophistication at an economical cost.

- Description: Architectural linear strip
- Mounting: Pendant, surface
- Construction: Die formed 20 gauge cold rolled steel housing. Finish is white polyester powder coat paint after fabrication. Optional aluminum (painted white), stainless steel (natural finish) or custom color paint finishes
- Light Distribution: Direct
- Light Levels: 250 lm/ft – 1000 lm/ft
- CCT: 3000k, 3500k, 4000k
- CRI: 80 or 90
- Direct Optics: Flat lens, square lens, round lens
- Driver / Enclosure: Standard constant current electronic driver housed with 0-10V dimming input; dimming range from 100% down to 1%; other dimming options are available
- Sizes: 2', 3', 4', 8'



Regolo1 DO

## REGOLO1 DISCRETE OPTICS

### Discretely present

The Regolo1 discrete optical system is constructed with LED emitters directing light through a single, custom-molded circular optic. With the ability to specify beam flood, the quiet downlight maintains a crisp architectural aesthetic while maintaining a high luminaire efficacy and comfortable luminance.

- Description: Architectural linear luminaire with discrete optical system
- Mounting: Pendant, surface, wall, recessed grid, recessed trimless, recessed flange, recessed mud ring
- Construction: Precision cut extruded aluminum housing. Housing standard is electrostatically applied textured white powder coat paint. Optional silver, black, or custom color paint finishes
- Light Distribution: Direct, bi-direct
- Light Levels: 250 - 750 lm/ft
- CCT: 3000k, 3500k, 4000k
- CRI: 80 or 90
- Direct Optics: Discrete optic – each LED emitter directs light through a single, custom molded circular optic. Specify beam angle in narrow flood - 35-degree, flood - 55-degree, or wide flood - 75-degree
- Driver / Enclosure: Standard constant current electronic driver housed with 0-10V dimming input; dimming range from 100% down to 1%; other dimming options are available
- Sizes: 2', 4', 6', 8' individual or continuous row specified in 2' increments



Sottile Round



Metallo Round



Sottile Flat



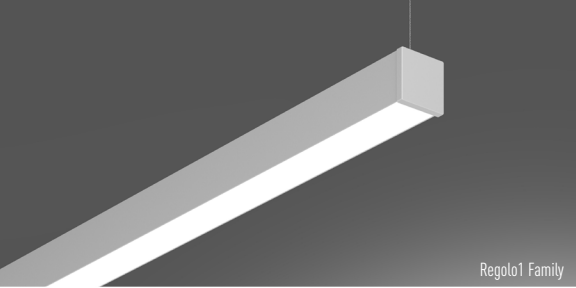
Metallo Flat

# SOTTILE / METALLO

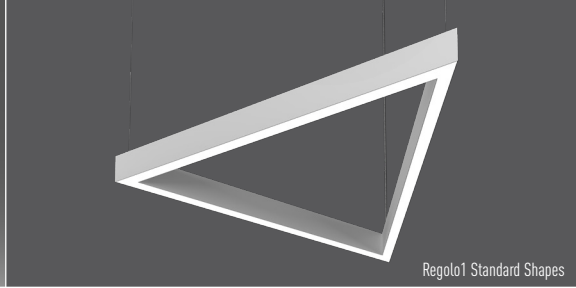
## Visually centered

Evenly distributed soft, natural light curved out from the center, the Sottile and Metallo are functionally designed to complement any architectural space.

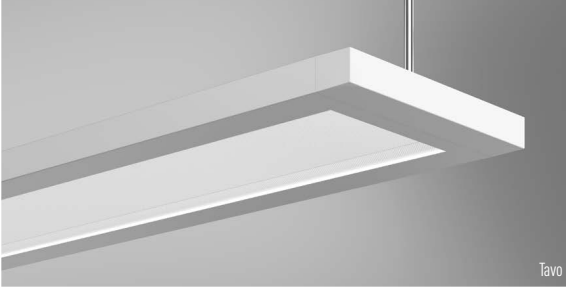
- Description: Recessed ambient lighting
- Mounting: Recessed grid, recessed flange, surface mount (flange and surface available in Sottile only)
- Construction: Die-formed cold roll steel housing. Housing finish is white baked enamel. Optional die formed 20 gauge cold rolled steel housing and powder coat paint after fabrication.
- Light Distribution: Direct
- Light Levels: 1x2/2x2 – 2000 LM, 2000HP LM, 3000 LM, 3000HP LM, 4000 LM; 1x4/2x2/2x4 – 3000 LM, 3000HP LM, 4000 LM, 4000HP LM, 5000 LM, 5000HP LM, 6000 LM, 7000 LM (7000 LM not available in Metallo)
- CCT: 3000k, 3500k, 4000k
- CRI: 80 or 90
- Direct Optics: Frosted acrylic diffuser
- Driver / Enclosure: Standard constant current electronic driver housed with 0-10V dimming input; dimming range from 100% down to 1%; other dimming options are available
- Sizes: 1' x 2', 1' x 4', 2' x 2', 2' x 4'



Regolo1 Family



Regolo1 Standard Shapes



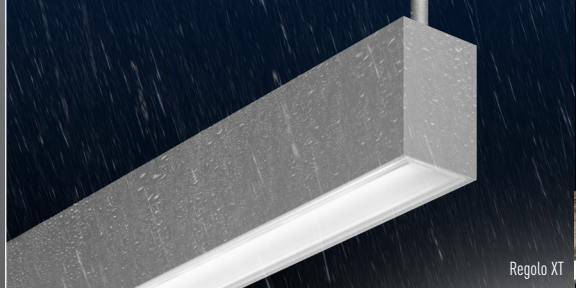
Tavo



Bounce



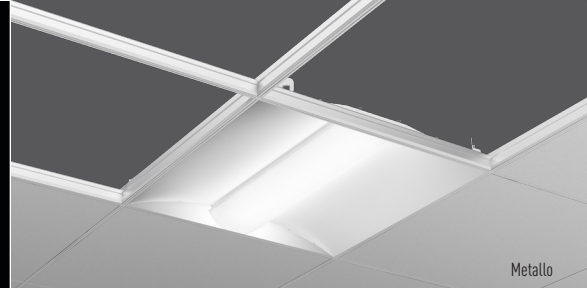
Regolo2 Family



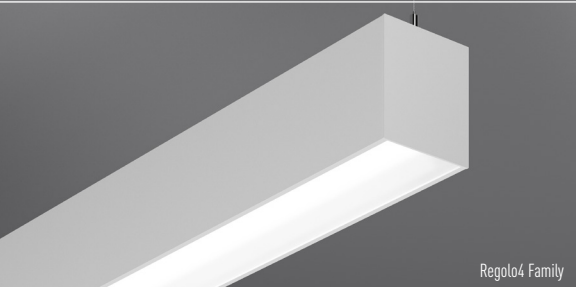
Regolo XT



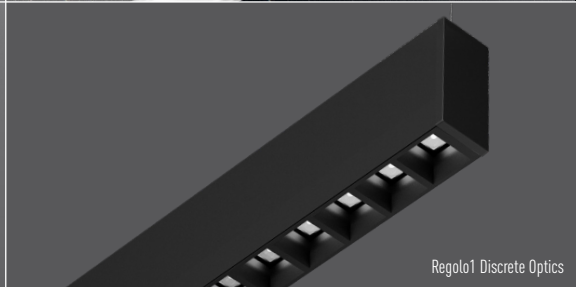
Sero Two-Tone Ash Gray



Metallo



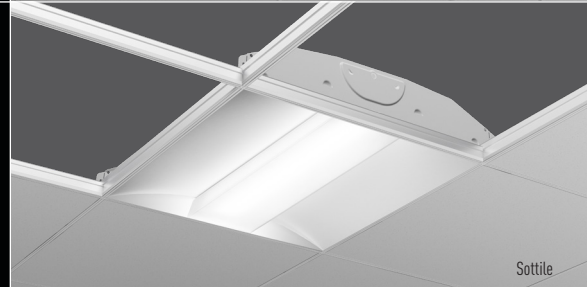
Regolo4 Family



Regolo1 Discrete Optics



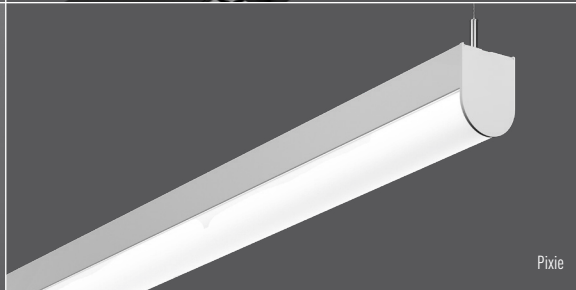
Qob Delicate Straight Grain



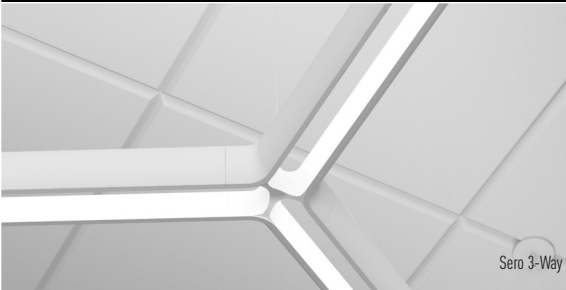
Sottile



Regolo6 Family



Pixie



Sero 3-Way







NULITE

10770 EAST 51ST AVENUE / DENVER, COLORADO 80239

P 303 287 9646 / [WWW.NULITE-LIGHTING.COM](http://WWW.NULITE-LIGHTING.COM)