

NULITE

# BOUNCE *AE*

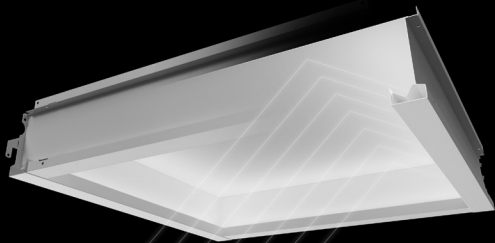
RECESSED LUMINAIRE

# BOUNCE AE

## A POWERFUL ARCHITECTURAL ELEMENT

Is it a low brightness luminaire that meets the **WELL Building Standard's** glare and circadian lighting requirements? Is it a luminous ceiling **element** enabling designers to create with color, texture, material and light? The answer is... YES! IT'S BOTH!... that's the power of BOUNCE AE.

BOUNCE AE's innovative design conceals the light source from direct view to eliminate glare while indirectly bouncing light off of a variety of reflector materials. The end result is an inviting, inspiring and productive workspace.

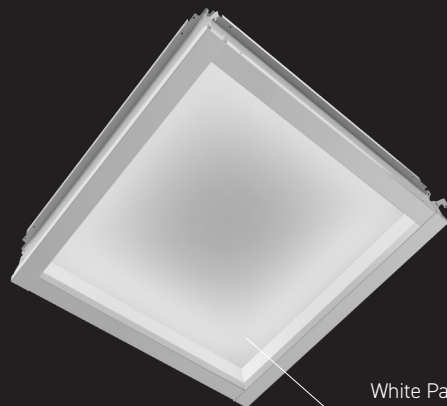


# BRM

Series

LED Recessed  
Luminaire

## GENERAL ILLUMINATION



White Painted  
Metal Top Reflec-  
tor by Nulite

- High Efficacy performance ambient recessed LED luminaire
- Low Glare Performance, all SKU's and light levels deliver luminance less than 6000 cd/m<sup>2</sup> between 45 and 90 degrees (Meets **WELL Building Standard's** Glare criteria- 2pts)
- Optional DALI or 0-10v Tunable White LED system (2700k-6000k) is able to deliver high melanopic lux at cooler color temperatures (enables meeting **WELL Building Standard's** Circadian Lighting Requirements - up to 3pts)
- Light source may be on 2 sides or 4 sides
- Sizes: 2'x2', and 2'x4'

TOP REFLECTOR BY NULITE

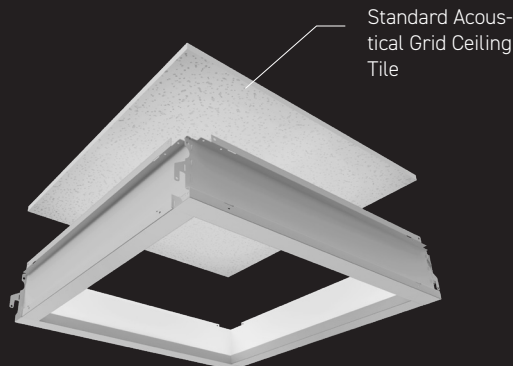
# BRT

Series

LED Recessed  
Luminaire  
Designer Specified Top Tile (Supplied by Others)

## GENERAL ILLUMINATION

### STANDARD CEILING TILES



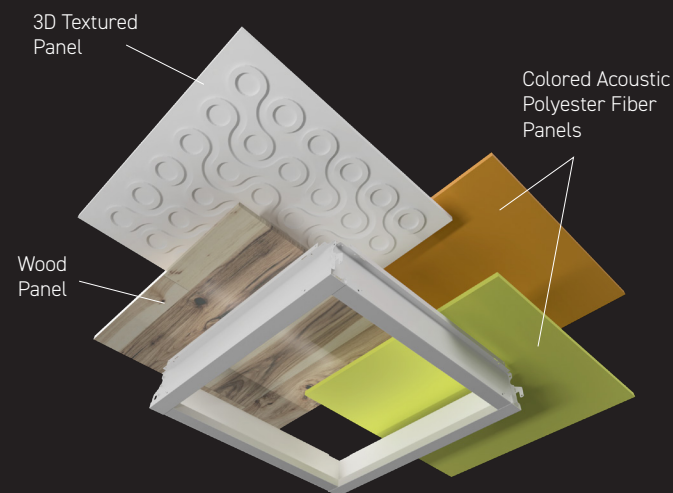
Standard Acous-  
tical Grid Ceiling  
Tile

- Typical off-the-shelf acoustical ceiling tile fits on top of the BRT series and it becomes the active top reflector of the luminaire.
- Same general operational features and functions as BRM series
- Value based solution for projects having extra tight budgets
- Tile supplied by third party, coordination with architect and ceiling trade required.
- Sizes: 2'x2', 2'x4', 4'x4'
- For best results within 4'x4' general illumination applications, Nulite recommends **Certaiteed, Techstyle White** large panel ceiling tiles

TOP TILE BY OTHERS

## LUMINOUS CEILING ACCENT

### CUSTOM MATERIALS/ TILES



3D Textured  
Panel

Wood  
Panel

Colored Acoustic  
Polyester Fiber  
Panels

- For applications where the design intent is to create luminous accent tiles in the ceiling, or lighting coves, the designer may choose any architectural material as the top reflector (weight restrictions apply)
- In the design phase, coordination with Nulite and the 3rd party supplier of the top panel material is necessary to create photometric files and production samples for client approval. Additional coordination is required with the architect and the ceiling installers.
- Same general operational features and functions as BRM series.
- Sizes: 2'x2', 2'x4', 4'x4'

NULITE

BOUNCE

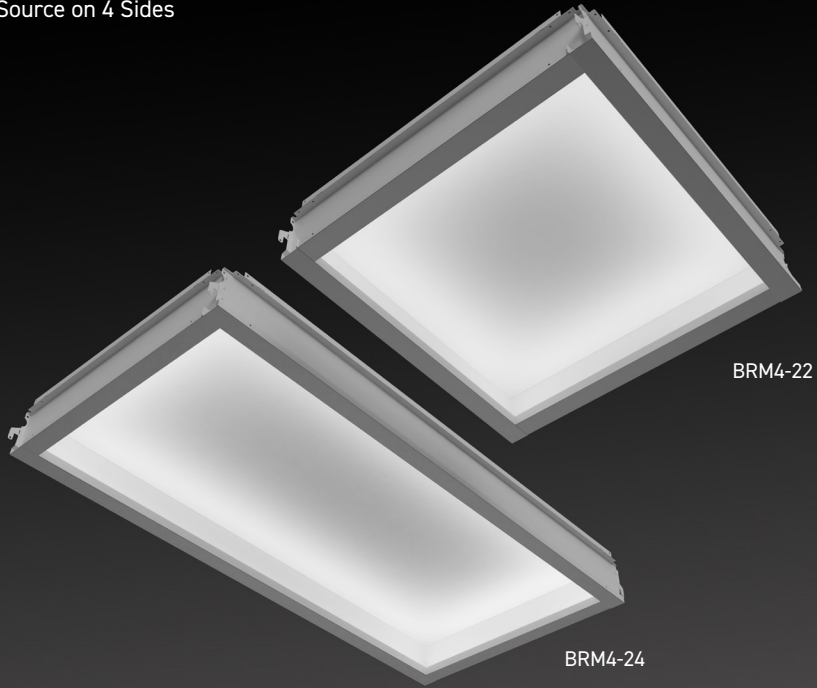
**BOUNCE** AE

**BRM**  
Series

LED Recessed  
Luminaire

**BRM4**

Light Source on 4 Sides

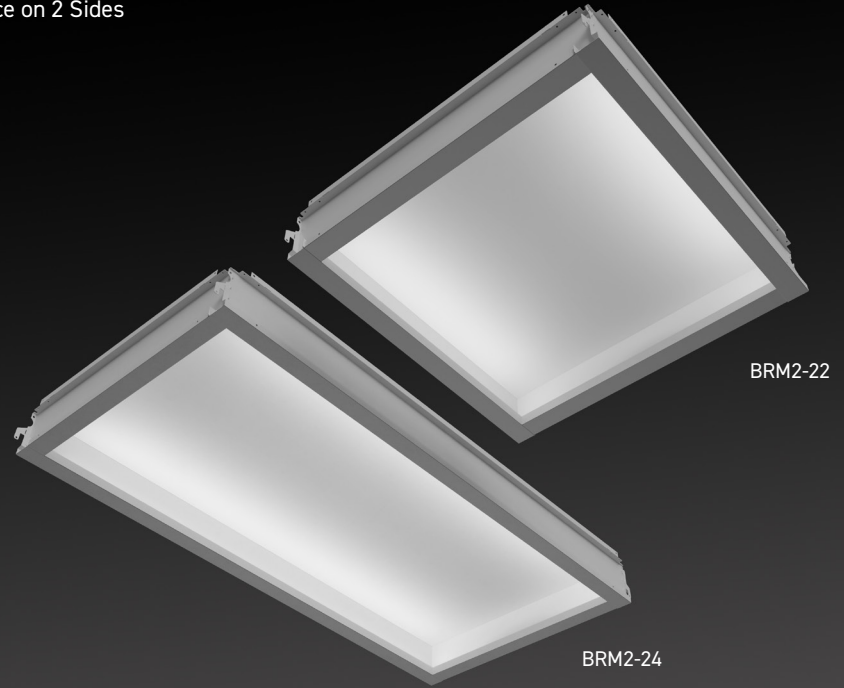


BRM4-22

BRM4-24

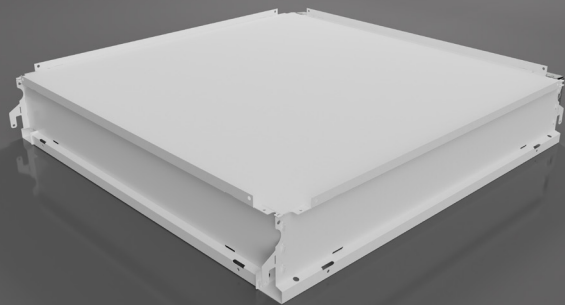
**BRM2**

Light Source on 2 Sides

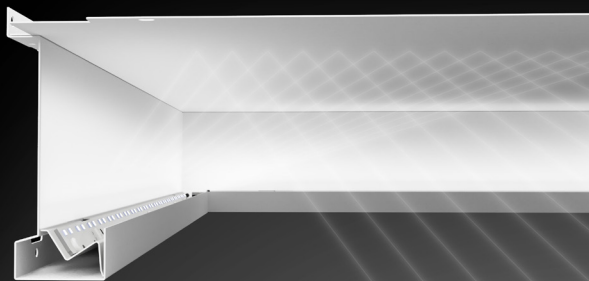


BRM2-22

BRM2-24

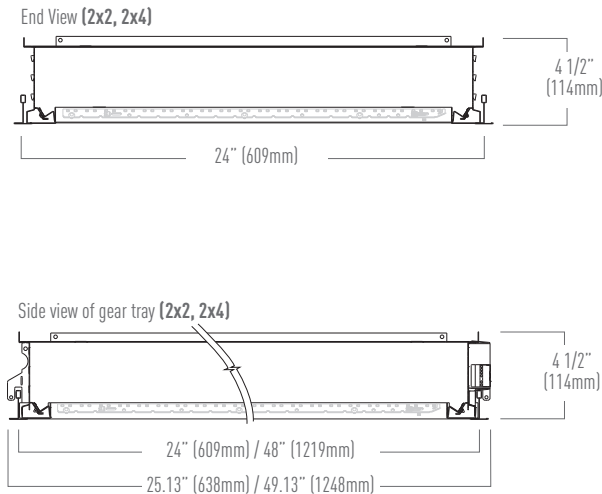


BRM series ships fully assembled with metal top reflector

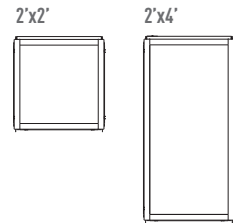


Concealed Light Source eliminates glare

DIMENSIONS



SIZES



**CONSTRUCTION:** Standard housings are die-formed 22 gauge cold rolled steel with a matte white powder coat painted finish. **DRIVER:** Reflector / driver cover is finished with high reflectant white paint. Drivers are standard constant current electronic drivers with 0-10V dimming input with dimming range from 100% down to 1% and Universal (UNV) voltage from 120 - 277V, 50/60 Hz. **LED MODULE:** Distributed LED array in a variety of lumen output packages. LED color is available in 3000K, 3500K, 4000K or 5000K and in 80CRI or 90CRI. Module is replaceable. Projected life is 90% of the light output at 100,000 hrs. **MOUNTING:** Installs into most grid ceilings (1", 9/16", and Tegular or "Slot-T"). May also be installed into inaccessible ceilings with a separate flange kit (FLG). **LABELS:** ETL Listed, conforms to UL Standard 1598/8750, CSA Standard C22.2 and Damp Location. **WARRANTY:** 5-Year Warranty Standard

SERIES

**BRM2** - Bounce AE Recessed, Concealed LEDs on 2 opposing sides (4' sides are illuminated on the 2'x4' model)  
**BRM4** - Bounce AE Recessed, Concealed LEDs on all 4 sides

SIZE

**22** - 2' x 2'  
**24** - 2' x 4'

LUMEN PACKAGE

2'x2'	2'x4'	
20 - 2000 lumens	35 - 3500 lumens	65 - 6500 lumens
25 - 2500 lumens	40 - 4000 lumens	70 - 7000 lumens
30 - 3000 lumens	45 - 4500 lumens	
35 - 3500 lumens	50 - 5000 lumens	
40 - 4000 lumens	55 - 5500 lumens	
45 - 4500 lumens	60 - 6000 lumens	

CRI / CCT

L30 - 3000K, 80 CRI	H30 - 3000K, 90 CRI	TW - Tunable White 90 CRI, 2700K - 6000K
L35 - 3500K, 80 CRI	H35 - 3500K, 90 CRI	
L40 - 4000K, 80 CRI	H40 - 4000K, 90 CRI	

BATTERY OPTIONS

B5 - 5W Battery Pack	B12 - 12W Battery Pack
B7 - 7W Battery Pack	CEC - CEC Compliant (10W Battery Pack)
B10 - 10W Battery Pack	

VOLTAGE

U - Universal  
1 - 120 Volt  
2 - 277 Volt

DRIVER

<b>Dimming 0 - 10V</b>	<b>DALI Dimming</b>
D - Dim to 1% (Standard)	ELE - Eldoled Ecodrive, dims to 1%
D0 - Dim to 1%, fade to off	ELS - Eldoled Solodrive, dims to 0%
D02 - Eldoled Solodrive, dims to 0%	TWDA - DALI Tunable White
TW10 - 0-10v Tunable White	
LUTRON - (refer to spec sheet)	

LUMINAIRE FINISH

W - White (Standard)

MOUNTING OPTIONS

FLG - Flange Kit for concealed ceilings

OPTIONS

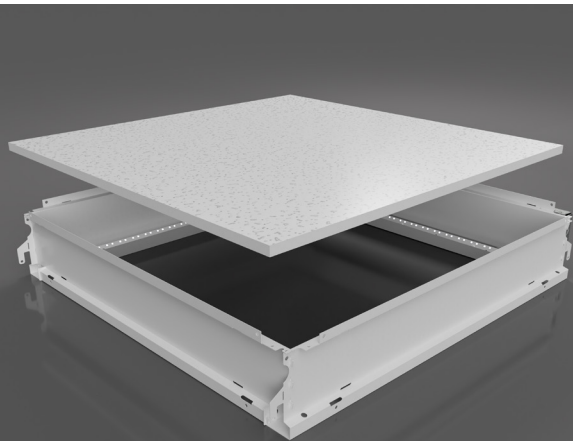
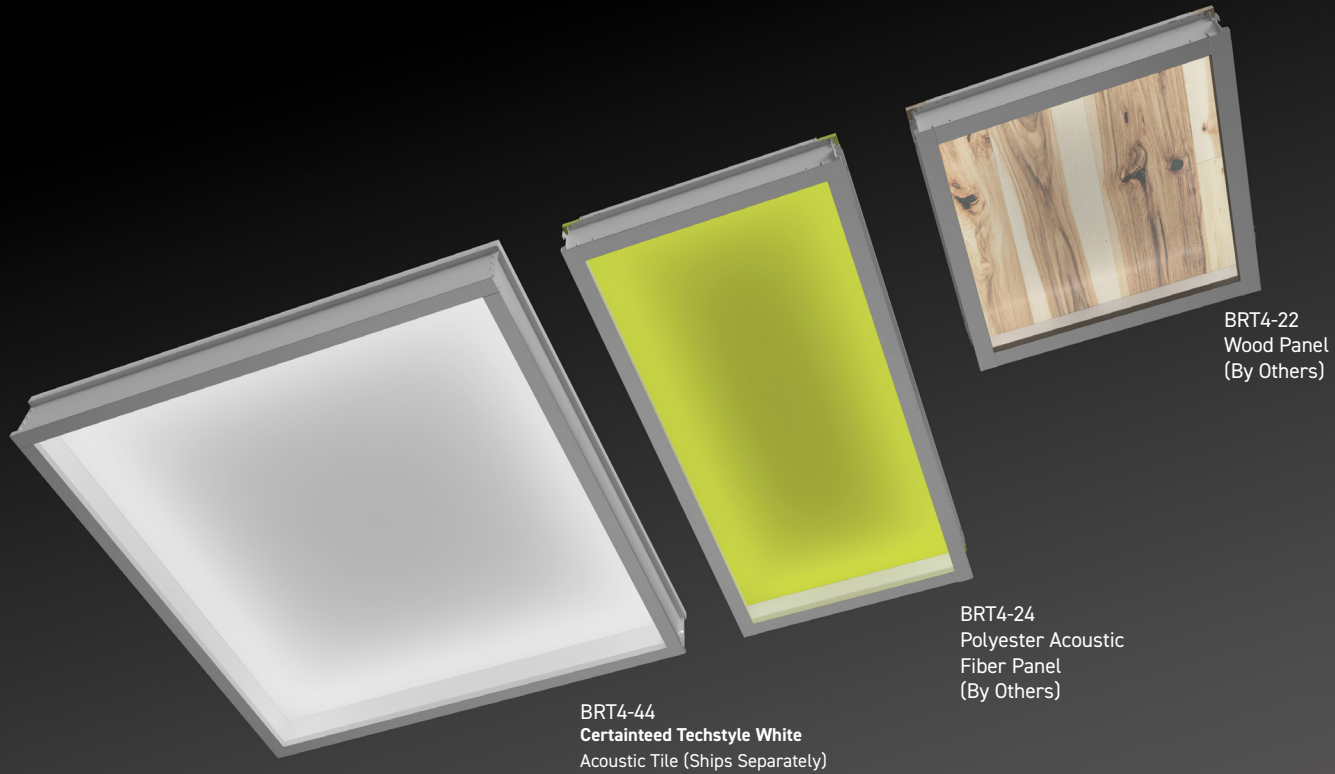
CP - Chicago Plenum	ETS - Electronic Transfer Switch
SIC - Seismic Clips	GTD - Generator Transfer Device
GLR - Fusing	UP - Unit Pack
FLEX3 - 6' of flex, 3-wire	
FLEX5 - 6' of flex, 5-wire	



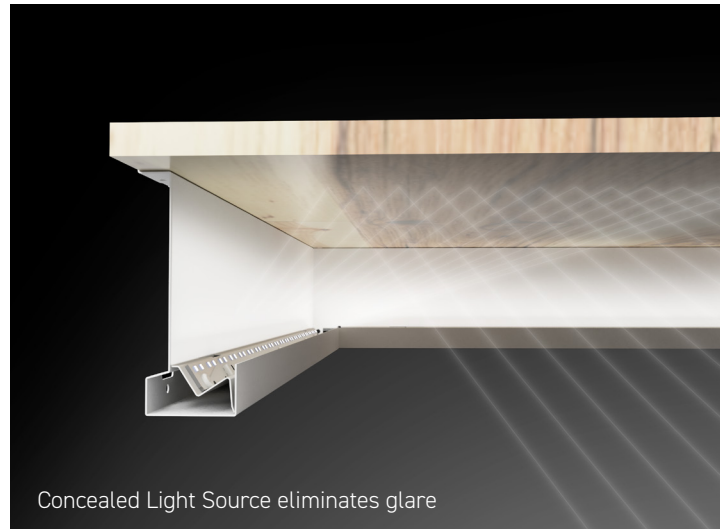
BOUNCE AE

**BRT**  
Series

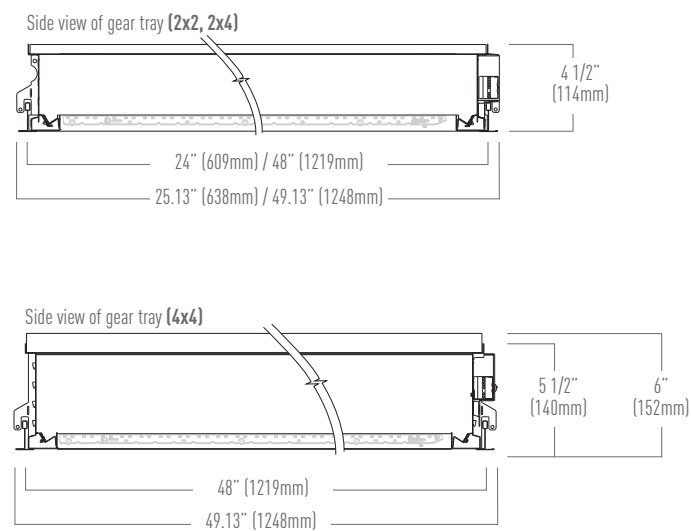
LED Recessed  
Luminaire  
Designer Specified Top Tile (Supplied by Others)



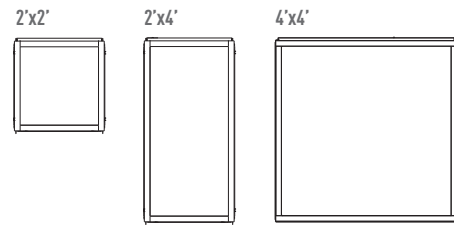
BRT series ships without top, tile supplied by others



DIMENSIONS



SIZES



**CONSTRUCTION:** Standard housings are die-formed 22 gauge cold rolled steel with a matte white powder coat painted finish. **DRIVER:** Reflector / driver cover is finished with high reflectant white paint. Drivers are standard constant current electronic drivers with 0-10V dimming input with dimming range from 100% down to 1% and Universal (UNV) voltage from 120 - 277V, 50/60 Hz. **LED MODULE:** Distributed LED array in a variety of lumen output packages. LED color is available in 3000K, 3500K, 4000K or 5000K and in 80CRI or 90CRI. Module is replaceable. Projected life is 90% of the light output at 100,000 hrs. **MOUNTING:** Installs into most grid ceilings (1", 9/16", and Tegular or "Slot-T"). May also be installed into inaccessible ceilings with a separate flange kit (FLG). **LABELS:** ETL Listed, conforms to UL Standard 1598/8750, CSA Standard C22.2 and Damp Location. **WARRANTY:** 5-Year Warranty Standard

SERIES

**BRT2** - Bounce AE Recessed, Top Tile By Others, Concealed LEDs on 2 opposing sides (4' sides are illuminated on the 2'x4' model)  
**BRT4** - Bounce AE Recessed, Top Tile By Others, Concealed LEDs on all 4 sides

SIZE

22 - 2' x 2'  
24 - 2' x 4'  
44 - 4' x 4'

LUMEN PACKAGE

2'x2'	2'x4'	4'x4'
20 - 2000 lumens	35 - 3500 lumens	40 - 4000 lumens
25 - 2500 lumens	40 - 4000 lumens	50 - 5000 lumens
30 - 3000 lumens	45 - 4500 lumens	60 - 6000 lumens
35 - 3500 lumens	50 - 5000 lumens	70 - 7000 lumens
40 - 4000 lumens	55 - 5500 lumens	80 - 8000 lumens
45 - 4500 lumens	60 - 6000 lumens	90 - 9000 lumens
	65 - 6500 lumens	100 - 10000 lumens
	70 - 7000 lumens	110 - 11000 lumens
		120 - 12000 lumens

CRI / CCT

L30 - 3000K, 80 CRI	H30 - 3000K, 90 CRI	TW - Tunable White 90 CRI, 2700K - 6000K
L35 - 3500K, 80 CRI	H35 - 3500K, 90 CRI	
L40 - 4000K, 80 CRI	H40 - 4000K, 90 CRI	

BATTERY OPTIONS

B5 - 5W Battery Pack	B12 - 12W Battery Pack
B7 - 7W Battery Pack	CEC - CEC Compliant (10W Battery Pack)
B10 - 10W Battery Pack	

VOLTAGE

U - Universal  
1 - 120 Volt  
2 - 277 Volt

DRIVER

Dimming 0 - 10V	DALI Dimming
D - Dim to 1% (Standard)	ELE - Eldoled Ecodrive, dims to 1%
D0 - Dim to 1%, fade to off	ELS - Eldoled Solodrive, dims to 0%
D02 - Eldoled Solodrive, dims to 0%	TWDA - DALI Tunable White
TW10 - 0-10v Tunable White	
LUTRON - (refer to spec sheet)	

LUMINAIRE FINISH

W - White (Standard)

MOUNTING OPTIONS

FL6 - Flange Kit for concealed ceilings

OPTIONS

CP - Chicago Plenum	ETS - Electronic Transfer Switch
SIC - Seismic Clips	GTD - Generator Transfer Device
GLR - Fusing	UP - Unit Pack
FLEX3 - 6' of flex, 3-wire	
FLEX5 - 6' of flex, 5-wire	

TILE BY OTHERS NOTES

**Tile Mfg/ Prod Series-** Building in the "Tile by others" designation into the Nulite part number will help with job site coordination, ensuring that these materials get matched up with the BRT on the job site. Requires coordination with the architect and the manufacturer of the tile.



NULITE

10770 EAST 51ST AVENUE / DENVER, COLORADO 80239

P 303 287 9646 / [WWW.NULITE-LIGHTING.COM](http://WWW.NULITE-LIGHTING.COM)